



In-Station Training

TM 23-20 Reported Occupants



Author

Chief Ed Hartin

Purpose

A report of trapped occupants increases the stress level of firefighters and officers responding to a residential fire. Washington Administrative Code (WAC) 296-305-05002 identifies that the first arriving companies can operate with “two-in/one-out” when there is a “known rescue”. What is your definition of a “known rescue”? As IC #1, how does conflicting information impact your tactical decisions?

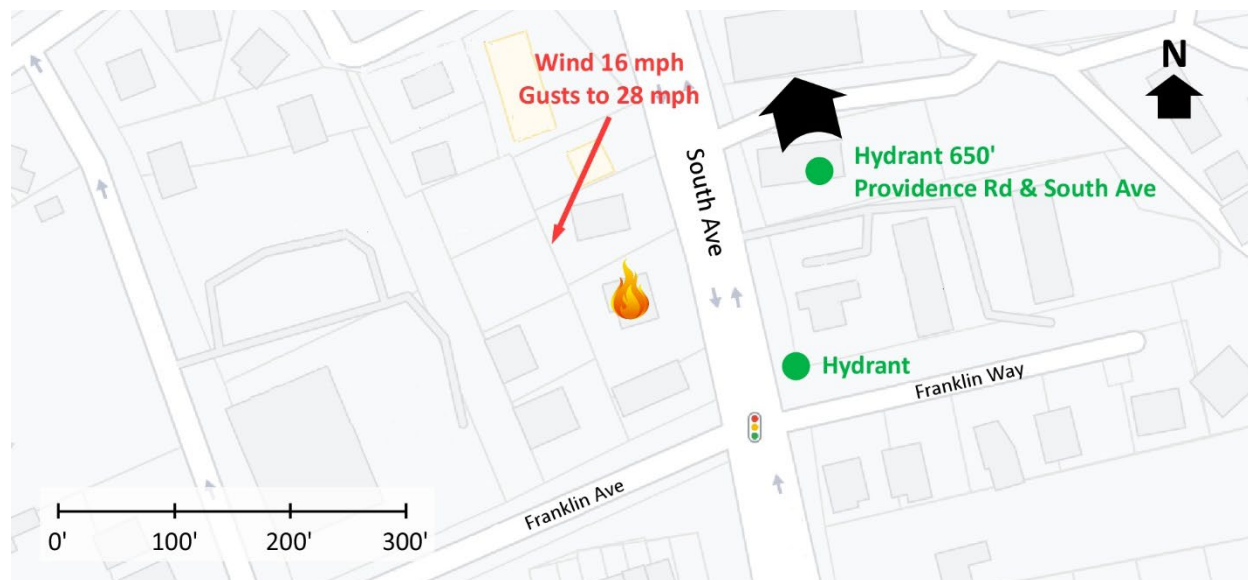
Learning Outcomes

Firefighters and officers perform an effective size-up; select an appropriate strategy, and implement tactics based on the strategic decision-making model.

Conducting the Drill

This incident involved a fire at 1009 South Ave in Ridley Township, Pennsylvania on April 28, 2023, at 16:23 (6abc Digital Staff, 2023; Daily Times, 2023; Philly FireFeed, 2023; & Wenoski, 2023). Review the map and photos (Figures 1-5) to gain an understanding of the area and building involved.

Figure 1. Map of the Incident Area

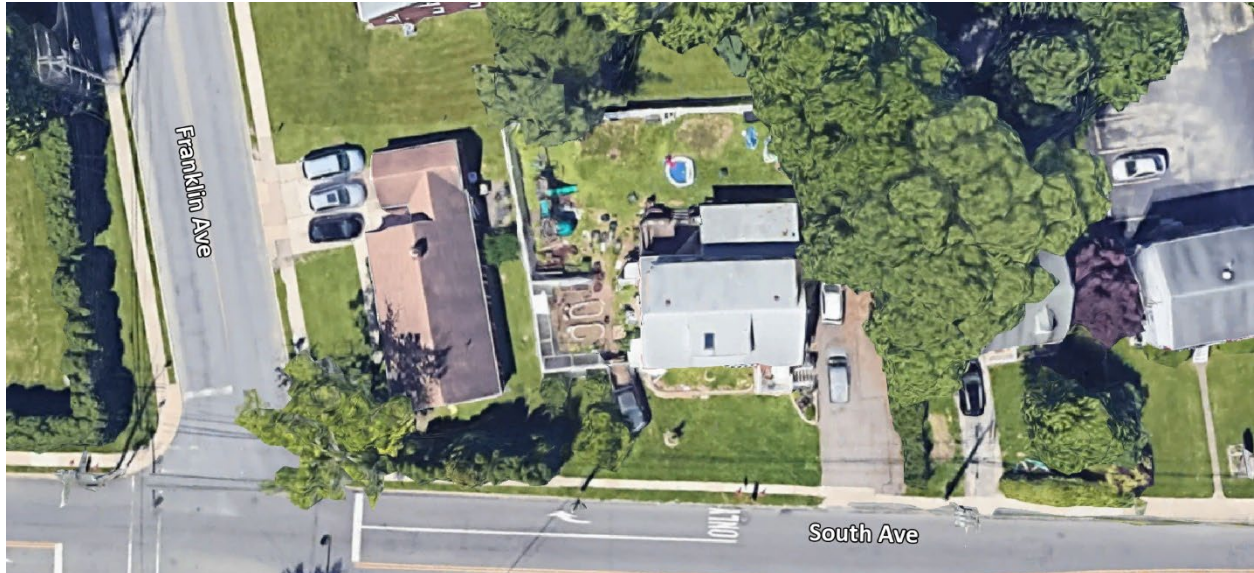


Note: Adapted from Google. (2023a). [map, 1009 South Ave, Ridley Township, PA].

<https://bit.ly/3nwFzUW>.

The closest hydrant is at the corner of South Avenue and Franklin Way and a second hydrant is located at Providence Road and South Avenue as illustrated in Figure 1.

Figure 2. Aerial View



Note: Adapted from Google. (2023b). [aerial view, 1009 South Ave, Ridley Township, PA].
<https://bit.ly/413Etc9>.

Figure 3. Alpha/Delta Corner



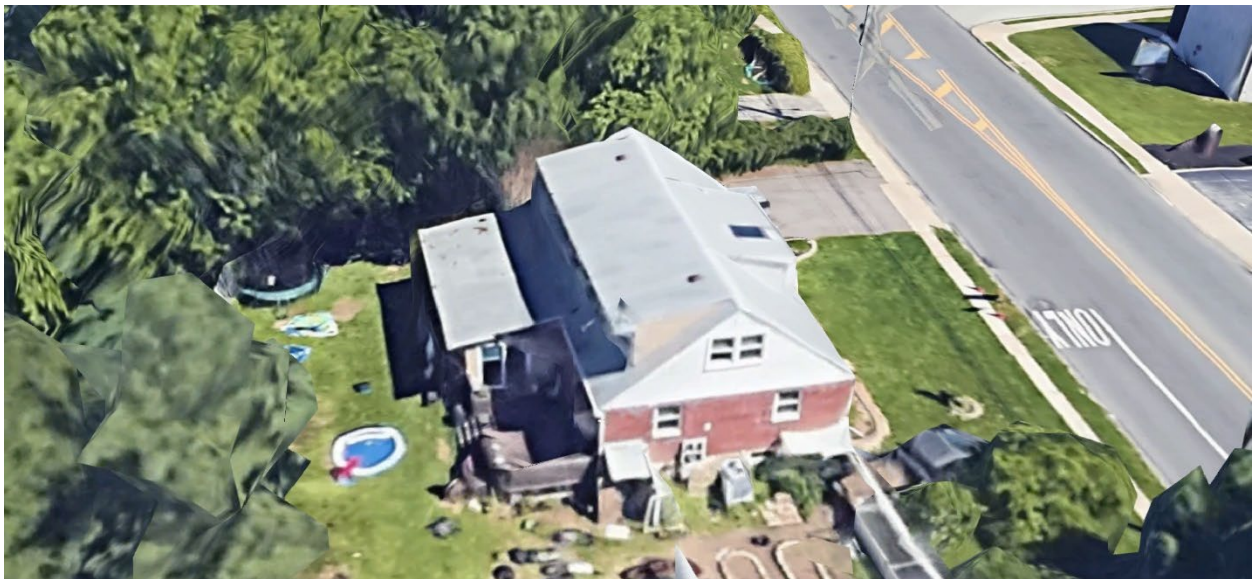
Note: Adapted from Google. (2022a). [street view, 1009 South Ave, Ridley Township, PA].
<https://bit.ly/3HK9HOG>.

Figure 4. Side Alpha



Note: Adapted from Google. (2022b). [street view, 1009 South Ave, Ridley Township, PA].
<https://bit.ly/3nyAxTe>.

Figure 5. Bravo/Charlie Corner



Note: Adapted from Google. (2023c). [3d aerial view, 1009 South Ave, Ridley Township, PA].
<https://bit.ly/42uIR5o>.

You have been dispatched to 1009 South Ave for a residential fire. You are the company officer or AIC of the first arriving engine and have your company's typical staffing. Temperature is 50° F with wind at 16 mph from the east northeast with gusts to 28 mph (Weather Underground, 2023).

1. What critical factors would you consider when dispatched and during response and what conversations would you have with your crew while responding?

While responding you hear a command officer, another engine and advanced life support ambulance with typical staffing for your agency go enroute. Dispatch provides an update reporting trapped occupants screaming from inside the house. The second engine and ALS ambulance will arrive approximately four minutes after you followed by the command officer. All other units dispatched on the first alarm will arrive after the command officer. You are arriving from the north on South Avenue.

Watch the [incident video](#) (Philly FireFeed, 2023) from 01:04 to 01:30 and examine Figures 6 and 7 illustrating conditions on arrival.

Figure 6. Conditions on Arrival



Note: Adapted from Philly FireFeed. (2023). 4-28-23, 1009 South Ave, Ridley Twp, Delaware Co, PA, all hands dwelling fire. <https://bit.ly/3NIN6pF>

Figure 7. Conditions on Arrival



Note: Adapted from Philly FireFeed. (2023). 4-28-23, 1009 South Ave, Ridley Twp, Delaware Co, PA, all hands dwelling fire. <https://bit.ly/3NIN6pF>

2. State your initial radio report (IRR) exactly as you would transmit it to dispatch.

3. What specific actions would you take (as the company officer) immediately upon arrival and exiting the apparatus and what task orders you would give your crew?

You are met by one of the occupants of the home who reports “everyone is out”. A small amount of smoke is visible on Side Delta and conditions on Side Charlie are illustrated in Figure 8.

Figure 8. Conditions on Side Charlie



Note: Adapted from Philly FireFeed. (2023). 4-28-23, 1009 South Ave, Ridley Twp, Delaware Co, PA, all hands dwelling fire. <https://bit.ly/3NIN6pF>

4. Would you change the action you are taking or modify the assignments given to your crew? If so, what task orders would you provide?
5. State your update report exactly as you would transmit it to dispatch.
6. State the tactical assignment you would give the next arriving engine exactly as you would transmit it.
7. Based on the anticipated effectiveness of your tactical operations, state your conditions, actions, and needs (CAN) report that you would provide to the first arriving command officer as part of command transfer to IC #2?

Watch the [incident video](#) (Philly FireFeed, 2023) from 01:30 to 03:00 before answering the remaining questions.

8. The first attack line was stretched through Side Alpha. Was this consistent with the placement of your initial attack line? What could have been the potential consequences of failing to address the exterior fire on Side Charlie?

9. How did wind speed and direction influence your tactical decision-making?

10. Dispatch reported trapped occupants and you were met by an occupant who stated, “everyone is out”. How did this conflicting information influence tactical decision-making?

Additional Learning: Data from the Firefighter Rescue Survey (2023) indicates that in the incidents reported, reports of victims were accurate 80% of the time. In other cases, there were reports of victims, but none were present and in other cases there were reports that everyone was out, but this information was inaccurate. Review, Washington Administrative Code (WAC) 296-305-05002 (or 29 Code of Federal Regulations (CFR) 1910.134(g)(4) if you work in the United States, but not in the State of Washington). Discuss how the relevant occupational safety and health regulations, your agency’s staffing, and information provided by dispatch, bystanders, or occupants impact on decisions made by IC #1 during the initial stages of a structure fire incident.

Consider the following scenarios:

- No report of occupants.
- Dispatch advises of trapped occupants, no additional information on arrival.
- Report that everyone is out provided by an occupant.
- Report of persons trapped by a bystander (not an occupant).
- Report that everyone is out provided by a bystander (not an occupant).
- An unconscious occupant visible a short distance inside the door.
- An occupant can be heard calling for help from inside the building, but is not visible from a door or window.

References

- 29 Code of Federal Regulations (CFR) 1910.134(g)(4). *Respiratory protection, procedures for interior structural firefighting*. Retrieved May 6, 2023, from <https://bit.ly/3M4qf6U>.
- 6abc Digital Staff. (2023). *2-alarm fire erupts in Delaware County home; 1 firefighter brought to hospital*. Retrieved May 6, 2023, from <https://bit.ly/42aavVr>.
- Daily Times. (2023). *Crews performing mop-up at house fire in Ridley Township*. Retrieved May 6, 2023, from <https://bit.ly/415hk9m>.
- Firefighter Rescue Survey. (2023). *The first 3000*. Retrieved May 6, 2023 from <https://bit.ly/42sqa22>.
- Google. (2022a). [street view, 1009 South Ave, Ridley Township, PA]. Retrieved May 6, 2023, from <https://bit.ly/3HK9HOG>.
- Google. (2022b). [street view, 1009 South Ave, Ridley Township, PA]. Retrieved May 6, 2023, from <https://bit.ly/3nyAxTe>.
- Google. (2023a). [map, 1009 South Ave, Ridley Township, PA]. Retrieved May 6, 2023, from <https://bit.ly/3nwFzUW>.
- Google. (2023b). [aerial view, 1009 South Ave, Ridley Township, PA]. Retrieved May 6, 2023, from <https://bit.ly/413Etc9>.
- Google. (2023c). [3d aerial view, 1009 South Ave, Ridley Township, PA]. Retrieved May 6, 2023, from <https://bit.ly/42uIR5o>.
- Philly FireFeed. (2023). *4-28-23, 1009 South Ave, Ridley Twp, Delaware Co, PA, all hands dwelling fire*. Retrieved May 6, 2023, from <https://bit.ly/3NIN6pF>.
- Washington Administrative Code (WAC) 296-305-05002. Retrieved May 6, 2023, from <https://bit.ly/3Np2F36>.
- Weather Underground (2023). *Essington, PA Weather History* [historical weather April 28, 2023]. Retrieved May 6, 2023, from <https://bit.ly/3nJfX2m>.
- Wenoski, F. (2023). *Working house fire Ridley Twp 1009 South Ave 4 28 23*. Retrieved May 6, 2023, from <https://bit.ly/44CrocQ>.