



In-Station Training

TM 23-24 Vegetation Fire



Author: Chief Ed Hartin

Purpose

Effective initial attack on a vegetation fire requires timely deployment of adequate resources, a solid size-up, and skilled tactical action while providing for firefighter safety.

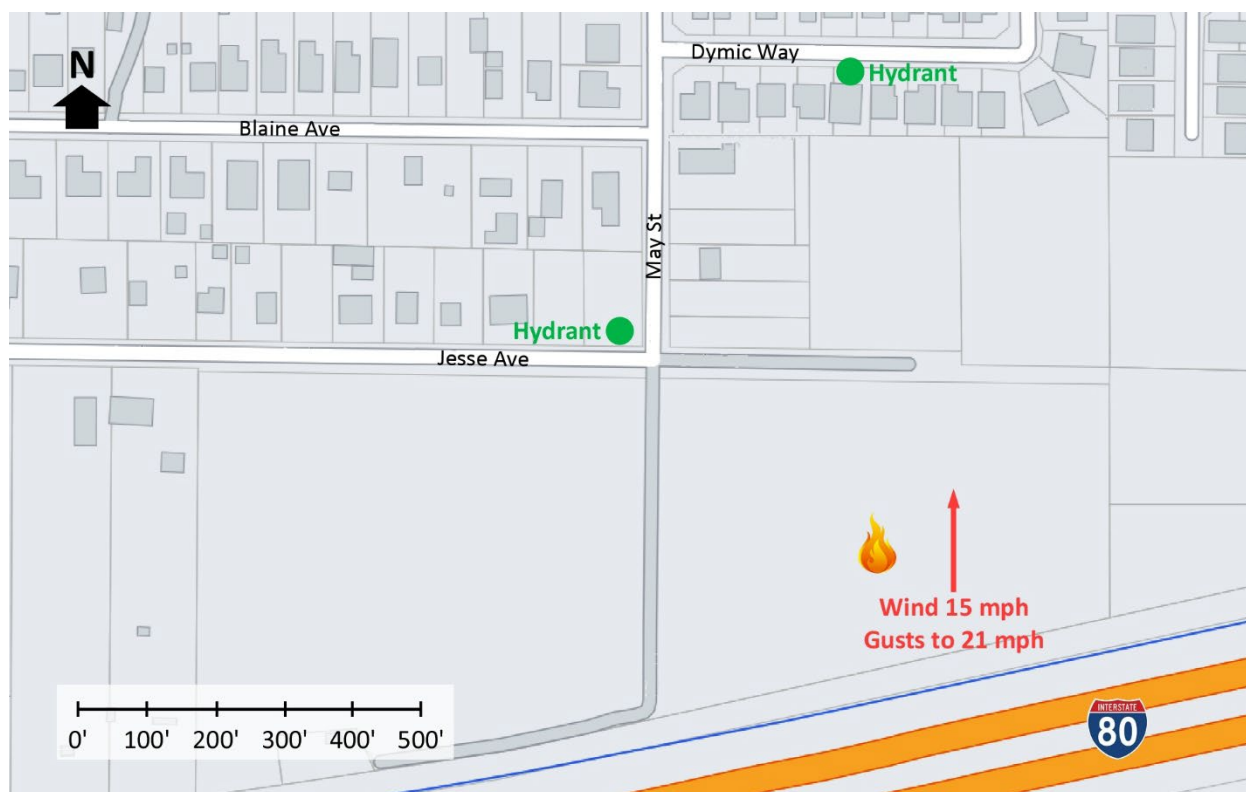
Learning Outcomes

Firefighters and officers, select an appropriate strategy, and implement tactics for initial attack at vegetation fires based on the strategic decision-making model.

Conducting the Drill

This incident involved a vegetation fire near the intersection of Jesse Avenue and May Street in Sacramento, California on April 22, 2021, at 15:00 (Nunez, 2021). Review the map and photos (Figures 1-7) to gain an understanding of the vegetation, terrain, and potential structural exposures involved.

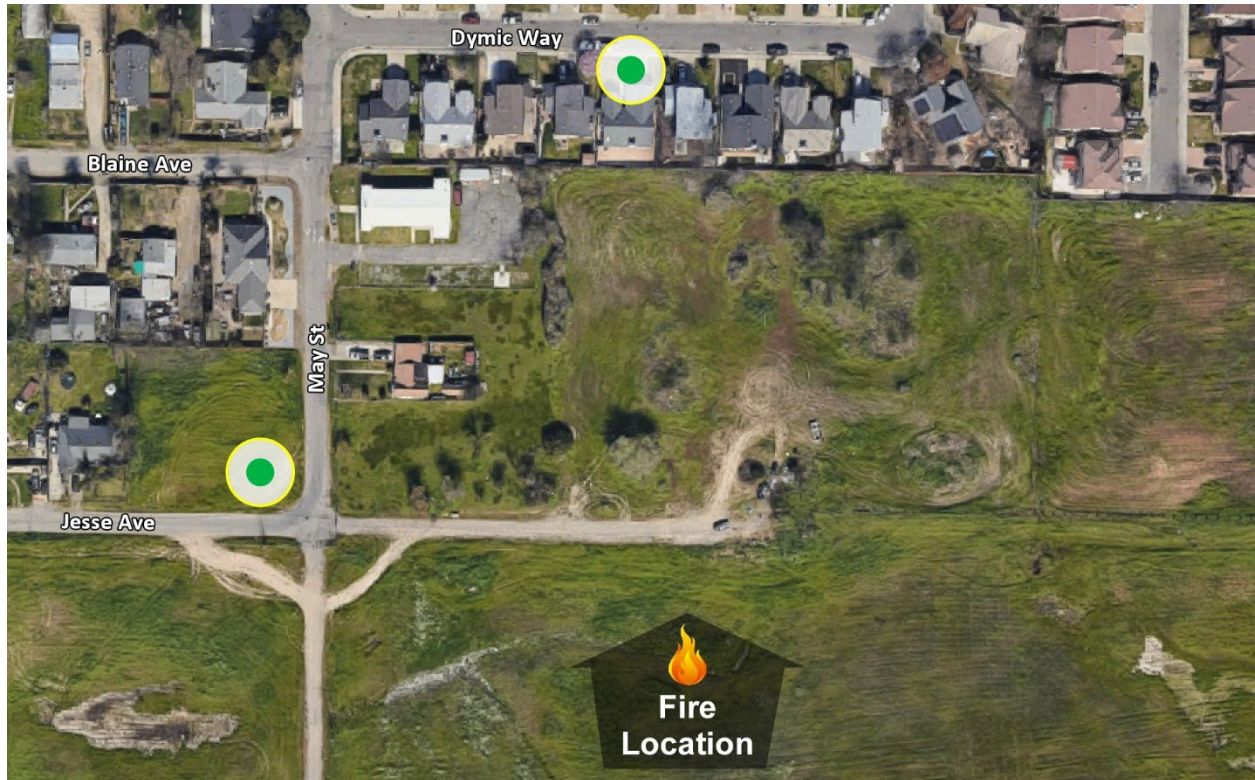
Figure 1. Map of the Incident Area



Note: Adapted from Google. (2023a). [Map Jesse Avenue and May Street, Sacramento, CA]. <https://bit.ly/43712hv>.

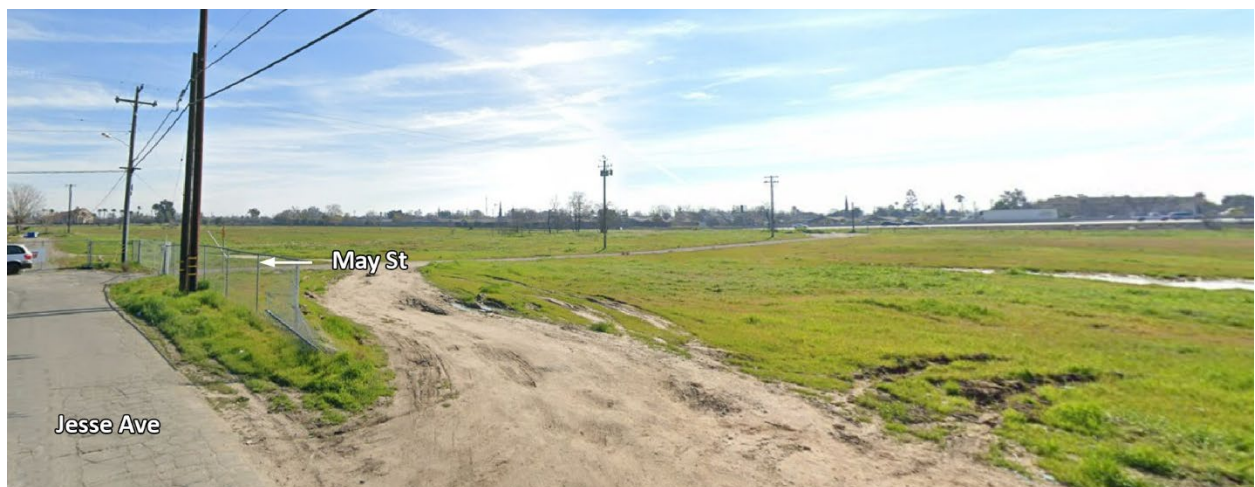
The closest hydrants at the intersection of Jesse Avenue and May Street and on Dymic Way as illustrated in Figures 1 and 2.

Figure 2. Aerial View



Note: Adapted from Google. (2023b). [Aerial view Jesse Avenue and May Street, Sacramento, CA]. <https://bit.ly/3WgpB9C>.

Figure 3. Jesse Avenue Looking Southeast



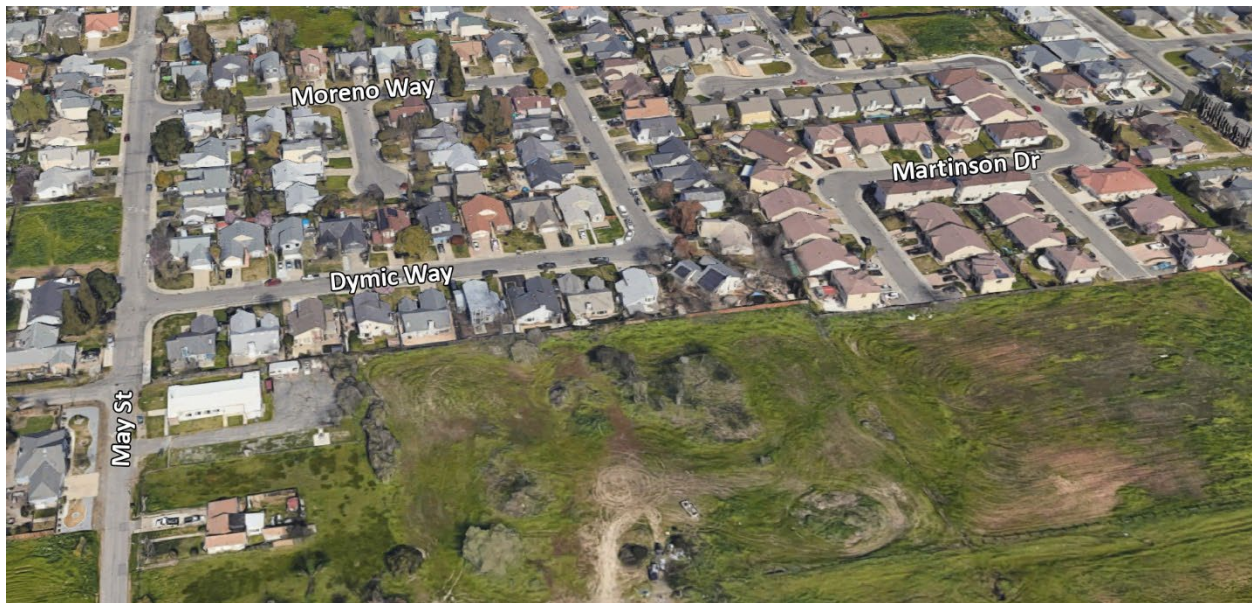
Note: Adapted from Google. (2022a). [Street View, 3646 Del Paso Boulevard, Sacramento, CA]. <https://bit.ly/43dcA3w>.

Figure 4. Jesse Avenue Looking Northeast



Note: Adapted from Google. (2022b). [Street View, Jesse Avenue and May Street, Sacramento, CA]. <https://bit.ly/428KYew>.

Figure 5. Residential Neighborhood North of the Fire Location



Note: Adapted from Google. (2023c). [3d aerial view, Jesse Avenue and May Street, Sacramento, CA]. <https://bit.ly/43wrwJs>.

Figure 6. Typical Houses on Dymic Way



Note: Adapted from Google. (2015d). [Street View, Jesse Avenue and May Street, Sacramento, CA]. <https://bit.ly/3WyR1b7>.

Figure 7. Typical Rear Yard on Dymic Way



Note: Adapted from Merrill Signature Properties. (2023). 4224 Dymic Way, Sacramento, CA. Retrieved May 27, 2023, from <https://bit.ly/429SXb8>.

You have been dispatched to vegetation fire north of Interstate 80 near the intersection of May Street and Jesse Avenue at 15:00. You are the company officer or AIC and have your company's typical staffing. Temperature is 73° F with winds from the south at 15 mph with gusts to 21 (Weather Underground, 2021).

1. What critical factors would you consider when dispatched and during response and what conversations would you have with your crew while responding?

You hear a command officer and a second engine with typical staffing for your agency, go enroute. The second engine will arrive approximately five minutes after you followed by the command officer. All other units dispatched on the first alarm will arrive after the command officer. You will arrive from the west on Jesse Avenue.

Watch the first 00:15 of the [incident video](#) (Nunez, 2021) and examine Figure 8 illustrating conditions on arrival.

Figure 8. Conditions on Arrival



Note: Adapted from Nunez, A. (2021). Pre-arrival: firefighters battle a large wind-driven grass fire in North Sacramento CA. <https://bit.ly/3C2msB7>

2. State your initial radio report (IRR) exactly as you would transmit it to dispatch.

3. What specific actions would you take (as the company officer) immediately upon arrival and exiting the apparatus and what task orders you would give your crew?

4. State your update report exactly as you would transmit it to dispatch.

5. State the tactical assignment you would give the second arriving engine exactly as you would transmit it.

6. State your conditions, actions, and needs (CAN) report that you would provide to the first arriving command officer as part of command transfer to IC #2?

7. Of the three elements of the wildland fire behavior triangle (weather, topography, and fuel) which had the greatest influence on fire behavior in this incident?

8. The standard Blue Card IRR can easily be adapted to a vegetation fire. How did you make this transition?

Blue Card Structure Fire IRR	Vegetation Fire IRR
Size	
Height	
Occupancy	
Conditions	
Initial IAP	
Strategy	
Establish and Name Command	
Resource Determination	

9. What initial attack tactics did you choose? What factors influenced your tactical decision-making?
10. How would your tactics differ if you arrived at this incident in a type six engine versus a type one engine?

Additional Learning: For additional review of vegetation fire size-up, read the National Wildfire Coordinating Group (NWCG) [6 Minutes for Safety Initial Attack Sizeup/Safety](#) (2021) and watch [How to Size-Up a Wildfire - Initial Attack Training](#) (ODF, n.d.).

East County Fire and Rescue's response area presents diverse wildland and interface hazards with fuel types ranging from grass to heavy timber, terrain ranging from flat to steep slopes, and variable winds with frequent high winds from the east through the Columbia River Gorge. While grass fires may seem to be less of a risk than fires in other fuel types, do not become complacent.

Watch [Oh, It's Just a Grass Fire](#) (Wildfire Lessons Learned Center, 2011) with your crew. Consider the appropriate personal protective equipment for vegetation fires (hint, it is not structural firefighting clothing). What wildland firefighting equipment is carried on your apparatus and what tactical options do you have for firefighting operations in light flashy fuels such as grass and light brush?

References

- Google. (2015d). [Street View, Jesse Avenue and May Street, Sacramento, CA]. Retrieved May 29, 2022, from <https://bit.ly/3WyR1b7>.
- Google. (2022a). [Street View, Jesse Avenue and May Street, Sacramento, CA]. Retrieved May 29, 2022, from <https://bit.ly/43dcA3w>.
- Google. (2022b). [Street View, Jesse Avenue and May Street, Sacramento, CA]. Retrieved May 29, 2022, from <https://bit.ly/428KYew>.
- Google. (2023a). [Map Jesse Avenue and May Street, Sacramento, CA]. Retrieved May 29, 2022, from <https://bit.ly/43712hv>.
- Google. (2023b). [aerial view Jesse Avenue and May Street, Sacramento, CA]. Retrieved May 29, 2022, from <https://bit.ly/3WgpB9C>.
- Google. (2023c). [3d aerial view, Jesse Avenue and May Street, Sacramento, CA]. Retrieved May 29, 2022, from <https://bit.ly/43wrwJs>.
- Merrill Signature Properties. (2023). 4224 Dymic Way, Sacramento, CA. Retrieved May 27, 2023, from Retrieved May 29, 2022, from <https://bit.ly/429SXb8>.
- National Wildfire Coordinating Group (NWCG). (2021). *6 minutes for safety initial attack size-up/safety*. Retrieved May 29, 2022, from <https://bit.ly/3a1MHNg>.
- Nunez, A. (2021). *Pre-arrival: firefighters battle a large wind-driven grass fire in North Sacramento CA*. Retrieved May 27, 2023, from <https://bit.ly/3C2msB7>.
- Oregon Department of Forestry. (n.d.). *How to size-up a wildfire - initial attack training*. Retrieved May 29, 2022, from <https://bit.ly/38R4Xc7>.
- Weather Underground (2021). *Sacramento, CA Weather History* [historical weather April 22, 2021]. Retrieved May 29, 2023, from <https://bit.ly/3OJejcc>.
- Wildfire Lessons Learned Center. (2011). *Oh, It's Just a Grass Fire*. Retrieved May 29, 2023, from <https://bit.ly/45y1veT>.