



# In-Station Training

## TM 23-34a Residential Fire Division Operations



### Author

Chief Ed Hartin

### Purpose

IC #2 transfers command from IC #1 (a working boss) to improve the effectiveness of command when the incident is not quickly resolved by the initial arriving resources. IC #2 should establish one or more divisions if his or her span of control will be stretched or if the nature of incident operations presents the need for close coordination or greater tactical supervision (e.g., unusual hazards).

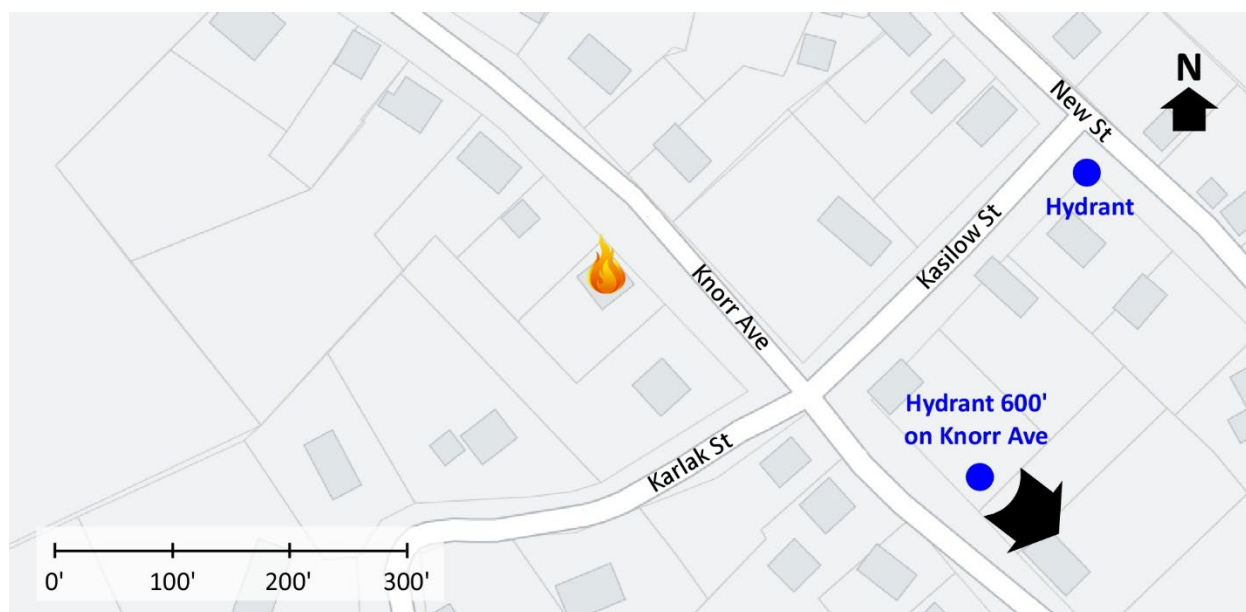
### Learning Outcomes

Command officers perform effective ongoing size-up; select an appropriate strategy, and implement tactics based on the strategic decision-making model. Command officers assigned as a division supervisor provide tactical supervision and embedded safety functions for their assigned resources.

### Conducting the Drill

This incident involved a residential fire at 45 Knorr Avenue in Seymour, Connecticut on January 19, 2023, at 08:10 (Muratori, 2023a, 2023b). Review the map and photos (Figures 1-7) to gain an understanding of the area and building involved.

Figure 1. Map of the Incident Area



Note: Adapted from Google. (2023a). [Map, 45 Knorr Avenue, Seymour, CT]. <https://bit.ly/3OBnJF0>.

There are hydrants within 600' of the incident location on Knorr Avenue and at the intersection of Kasilow Street and New Street as illustrated in Figure 1.

Figure 2. Aerial View



Note: Adapted from Google. (2023b). [Aerial view 45 Knorr Avenue, Seymour, CT]. <https://bit.ly/3sfkPOD>.

Figure 3. Alpha/Bravo Corner



Note: Adapted from Google. (2019a). [Street view 45 Knorr Avenue, Seymour, CT]. <https://bit.ly/3qsxeyo>.



Figure 4. Side Alpha



*Note:* Adapted from Google. (2019b). [Street view 45 Knorr Avenue, Seymour, CT].  
<https://bit.ly/44eQkpG>.

Figure 5. Alpha/Delta Corner



*Note:* Adapted from Google. (2019c). [Street view 45 Knorr Avenue, Seymour, CT].  
<https://bit.ly/452uCWU>.

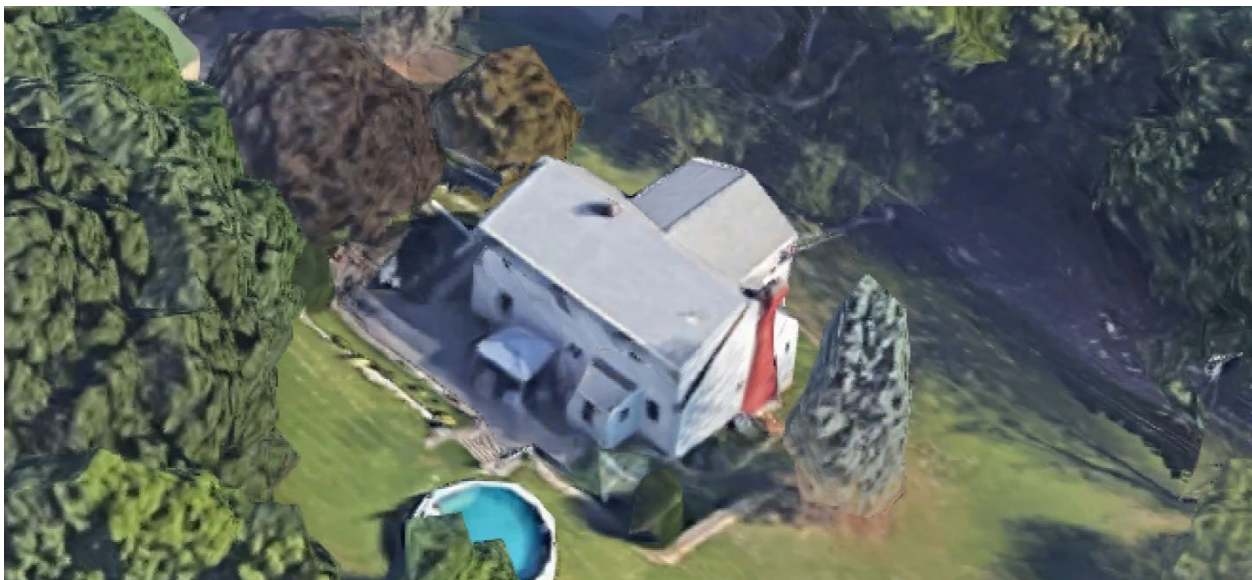


Figure 6. Side Delta Driveway and Garage



Note: Adapted from Google. (2019d). [Street view 45 Knorr Avenue, Seymour, CT]. <https://bit.ly/4469hL1>.

Figure 7. Bravo/Charie Corner



Note: Adapted from Google. (2023c). [3d aerial view 45 Knorr Avenue, Seymour, CT]. <https://bit.ly/4469hL1>.

You were dispatched to 45 Knorr Avenue for a residential fire at 08:10. **You are responding to this incident as the second arriving command officer.** Temperature is 40° F with wind from the west northwest at 3 mph (Weather Underground, 2023). While responding you hear four engines, an advanced life support (ALS) ambulance, and a command officer go enroute. The engines have staffing typical of your agency.

While enroute, dispatch provides an update that multiple callers are reporting a fire at the rear of 45 Knorr Avenue. The first engine will arrive from the southeast east on Knorr Avenue. The second engine and ALS ambulance approximately six minutes after the first. The third company (engine or truck) will arrive 12 minutes after the first arriving engine. Make a note of your resource and staffing assumptions prior to continuing with this 10-Minute Training. **You will arrive from the southeast after the first arriving command officer.** Additional resources that have been dispatched will arrive later in the incident.

1. What critical factors would you consider when dispatched and during response?

As you were responding Engine 1 provided the following initial radio report:

*On-scene of a small two story, house with a working fire on Side Charlie, stretching an attack line on Side Charlie for fire control, in the offensive strategy, initiating Knorr Command, give me a second alarm, Level 2 Staging on New Street one block south of Kasilow Street.*

Engine 1's update report is limited to the following:

*360 complete, walk-up basement with a bulkhead on Side Delta. Fire on Floors 1, 2, and the attic with no basement involvement, remaining offensive, Engine 1 is accountability on the Alpha/Bravo corner.*

Engine 2 and Medic 2 arrive and advise Knorr Command they are Level 1 at a hydrant on Knorr Street. Knorr Command provides the following orders to Engine 2 and Medic 2.

*Engine 2, Forward lay to Engine 1, stretch a second attack line off Engine 1, go on-deck Side Charlie, we are through Side Charlie for fire control and primary search.*

*Medic 2, park out of the way, integrate with Engine 2.*

Engine 3 arrives and advises Knorr Command they are Level 1. Knorr Command provides the following orders to Engine 3 and Engine 2.

*Engine 3, pump Engine 1's supply line, stretch an attack line off Engine 1, go on deck Side Alpha.*

*Engine 2, stretch through Side Charlie and assist with fire control and primary search.*

Chief 1 arrives and begins the command transfer.

*Knorr Command, Chief 1. I understand that you have Engine 1 on Floor 1 for fire control, Engine 2 on Floor 2 for fire control, and Engine 3 on-deck Side Charlie. Medic 2 is integrated with Engine 2. Confirm and CAN.*

Engine 1 provides the following CAN.

*That's correct, knockdown on the fire on Floors 1 and 2, we have balloon frame construction with significant extension. Continuing fire control and need two additional companies on Floors 1 and 2 with hooks to assist with fire control and an additional on-deck company on Side Charlie.*

Chief 1 acknowledges and completes the command transfer.

*OK, I'll take it from out here.*

*Dispatch, Chief 1. Chief 1 has Knorr Command, command is located on Side Alpha, continuing offensive and continue second alarm companies with Level 2 Staging on New Street one block south of Kasilow Street.*

You (Chief 2) arrive on Knorr Street south of Kasilow Street and advise Knorr Command that you are Level 1. Command provides the following assignment:

*Chief 2 you will have Division Charlie with Engines 1, 2, and 3. Your initial objective is fire control and primary search on Floors 1 and 2. Engine 1 has requested additional companies with hooks on Floors 1 and 2 along with an additional on-deck company.*

Watch the [incident video](#) (Muratori, 2023a) from 00:07 to 00:27 and examine Figure 8 illustrating conditions on your arrival.

Figure 8. Conditions on Arrival of Chief 2-View from Knorr Street South of Kasilow Street



*Note:* Adapted from Muratori, K. (2023a). Knorr Ave. 2nd Alarm Fire (Seymour, CT) 1/19/23 [video]. <https://bit.ly/3QC6Gp9>.



Figure 9. Conditions on Arrival of Chief 2-View of Alpha/Bravo Corner



*Note:* Adapted from Muratori, K. (2023a). Knorr Ave. 2nd Alarm Fire (Seymour, CT) 1/19/23 [video]. <https://bit.ly/3QC6Gp9>.

You arrive on Side Charlie and observe the conditions illustrated in Figure 10.

Figure 10. Conditions on Side Charlie on Arrival of Chief 2



*Note:* Adapted from Muratori, K. (2023a). Knorr Ave. 2nd Alarm Fire (Seymour, CT) 1/19/23 [video]. <https://bit.ly/3QC6Gp9>.

2. What actions will you take prior to contacting IC #2 (Chief 1) to confirm that you are in place and ready to assume Division Charlie?
3. State your communication with IC #2 to assume Division Charlie (exactly as you would transmit it).
4. What communication will you have with Engine 3, the on-deck company and how will you communicate with them (e.g., face-to-face or radio)?

Watch the [incident video](#) (Muratori, 2023a) from 00:27 to 01:07 (conditions as you assume Division Charlie)

5. State the communication you will have with Engine 1 and Engine 2 (exactly as you would transmit it).

Engine 1 provides the following CAN:

*Fire knocked down on Floor 1 and an all clear on primary search Floor 1, but we still have fire in the wall and ceiling on Side Delta. We are opening up and applying water with good effect. Air status just over 50%, need two companies with hooks to complete fire control and will need to recycle shortly.*

Engine 2 provides the following CAN:

*All clear on primary search Floor 2, but we still have fire in attic and are pulling ceilings and applying water with limited effect. Air status just over 50%, need two companies with hooks to complete fire control and will need to recycle shortly.*

6. State the communication you will have with Engine 1 and 2 based on these CAN reports.



7. State the communication you would have with Engine 3 based on Engine 1's and 2's CAN reports exactly as you would say it.
  
8. State the communication you would have with IC #2 regarding conditions and resource needs in Division Charlie.
  
9. What action would you take based on the CAN from Engine 1 (IC #1). State the communications you would have with the operating companies exactly as you would transmit them.

Watch the [incident video](#) (Muratori, 2023a) from 01:07 to 02:27 illustrating ongoing conditions on Side Charlie before answering the next several questions.

10. Did you identify the presence and involvement of photovoltaic panels on the roof as a critical safety issue and communicate this information to Command with a priority traffic radio message and why or why not?
  
11. How did the presence and involvement of photovoltaic panels impact the direction you provided Engine 1 and 2 (and/or companies relieving them on Floors 1 and 2)?

Watch the [incident video](#) (Muratori, 2023a) from 03:57 to 04:47 illustrating overhaul operations in Division Charlie before answering the next question.

12. What safety concerns did you observe in this video clip? As Division C, how and when would you address these concerns?

**Additional Learning:** Have a look at [6 steps to safe, effective solar panel, ESS fire attack](#) (Birt, 2021) for an overview of firefighting operations involving photovoltaic panels and electrical storage systems (ESS).

Also, review the general process for establishing a division and the responsibilities for tactical supervision and embedded safety (Hartin, 2023). If the division supervisor is working alone, their span of control is limited to three or four companies. Reinforcing the division supervisor with a division safety officer increases the division's span of control and the quality of tactical supervision and safety oversight. The following general sequence is used when establishing a division:

1. Division supervisor assigned.
2. Division picks up passports from accountability location(s).
3. Division advises when in place and assuming the division.
4. Companies in the division notified that they work for the division and CAN reports requested.
5. CAN reports to division supervisor.
6. Division safety officer assigned (2<sup>nd</sup> command officer or other overhead).

A division has two sets of responsibilities, one for tactical supervision and the other for embedded safety as outlined in Table 1. If the division supervisor is working alone (no division safety assigned) they are responsible for both tactical supervision and embedded safety functions.

Table 1. Division Responsibilities

Tactical Supervision	Embedded Safety
<ul style="list-style-type: none"><li>• Division IAP matches IC's Plan</li><li>• Division risk management (positions match conditions)</li><li>• Entry control</li><li>• Manage resources &amp; complete tactical priorities</li></ul>	<ul style="list-style-type: none"><li>• Accountability</li><li>• Air management</li><li>• Rotation of companies</li><li>• On-deck companies</li><li>• Recycling</li><li>• Sending companies to rehab</li></ul>

The division supervisor & division safety are a team. The division safety officer works with and for the division supervisor. Remember that it doesn't matter what agency you work for and leave your rank in the fire SUV.



## References

- Birt, R. (2021). 6 steps to safe, effective solar panel, ESS fire attack. Retrieved August 13, 2023, from <https://bit.ly/3KDbqXN>.
- Muratori, K. (2023a). Knorr Ave. 2nd Alarm Fire (Seymour, CT) 1/19/23 [video]. Retrieved August 13, 2023, from <https://bit.ly/3QC6Gp9>.
- Muratori, K. (2023b). 2-Alarm fire in Seymour, CT – January 19, 2023. Retrieved August 13, 2023, from <https://bit.ly/3s8EyQd>.
- Weather Underground (2023). *East Haven, CT Weather History* [historical weather January 19, 2023]. Retrieved August 13, 2023, from <https://bit.ly/3qmTBFw>.
- Google. (2023a). [Map, 45 Knorr Avenue, Seymor, CT]. Retrieved August 13, 2023, from <https://bit.ly/3OBnJF0>.
- Google. (2023b). [Aerial view 45 Knorr Avenue, Seymor, CT]. Retrieved August 13, 2023, from <https://bit.ly/3sfkPOD>.
- Google. (2019a). [Street view 45 Knorr Avenue, Seymor, CT]. Retrieved August 13, 2023, from <https://bit.ly/3qsxevo>.
- Google. (2019b). [Street view 45 Knorr Avenue, Seymor, CT]. Retrieved August 13, 2023, from <https://bit.ly/44eQkpG>.
- Google. (2019c). [Street view 45 Knorr Avenue, Seymor, CT]. Retrieved August 13, 2023, from <https://bit.ly/452uCWU>.
- Google. (2019d). [Street view 45 Knorr Avenue, Seymor, CT]. Retrieved August 13, 2023, from <https://bit.ly/4469hL1>.
- Google. (2023c). [3d aerial view 45 Knorr Avenue, Seymor, CT]. Retrieved August 13, 2023, from <https://bit.ly/4469hL1>.
- Hartin, E. (ECFR). (2023). *Division operations: effective management in the hazard zone*. Camas, WA: East County Fire and Rescue.