



# In-Station Training

## TM 23-46 Residential Fire



### Author

Chief Ed Hartin

### Purpose

Selection of strategy (offensive or defensive) must be based on assessment of the incident's critical factors. IC #1 should be cautious about declaring a defensive strategy prior to conducting a 360 as conditions may be quite different from perspectives other than in the cab of the apparatus on arrival. However, IC #1 should not be hesitant to declare a defensive strategy when conditions preclude offensive operations.

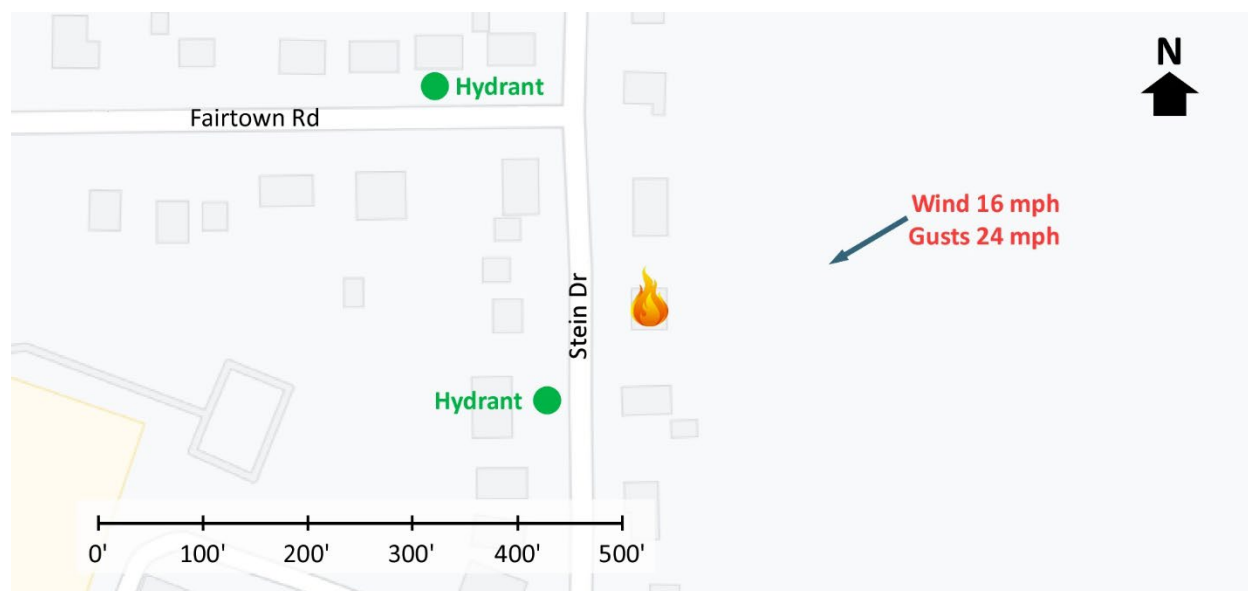
### Learning Outcomes

Firefighters and officers perform an effective size-up, select an appropriate strategy, and implement tactics based on the strategic decision-making model.

### Conducting the Drill

This incident involved a residential fire at 1773 Stein Drive in Brentwood, New York on February 28, 2023, at 06:45 (Bradbury, 2023 & Mullarkey, 2023). Review the map and photos (Figures 1-5) to gain an understanding of the area and building involved.

Figure 1. Map of the Incident Area



Note: Adapted from Google. (2023a). [Map, 1773 Stein Drive, Brentwood, NY]. <https://bit.ly/3Qi7AGB>.

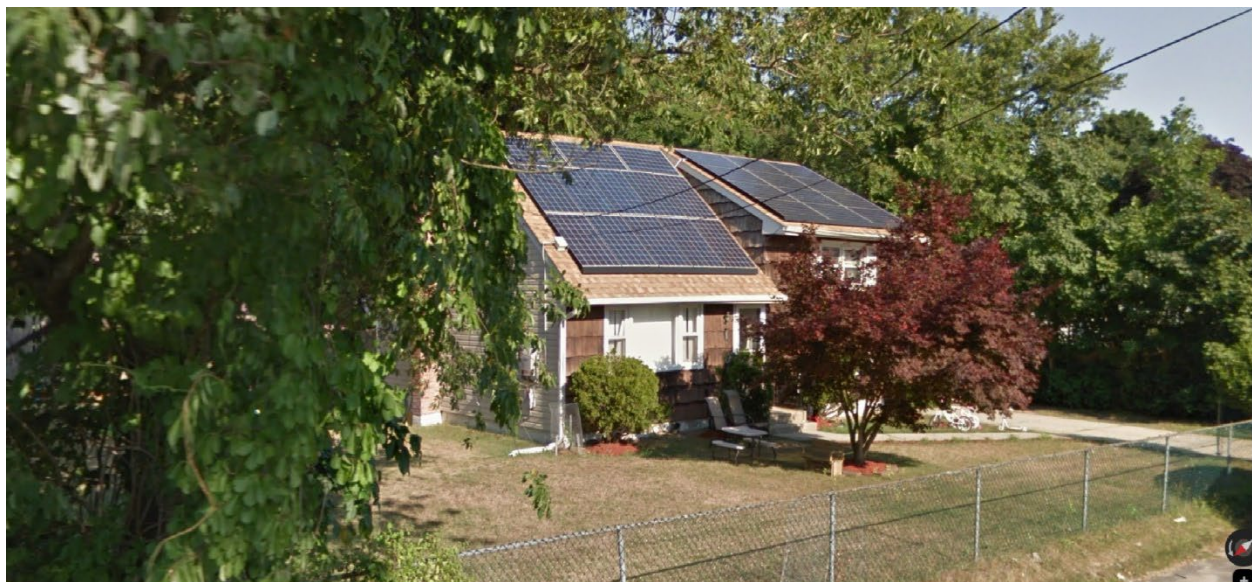
Figure 2. Aerial View



*Note:* Adapted from Google. (2023b). [Aerial view, 1773 Stein Drive, Brentwood, NY].  
<https://bit.ly/402I5NT>.

The closest hydrant is adjacent to the incident location on Stein Drive. An additional hydrant is located on Fairtown Road.

Figure 3. Alpha/Bravo Corner



*Note:* Adapted from Google. (2018a). [Street view, 1773 Stein Drive, Brentwood, NY].  
<https://bit.ly/3Qm0tgg>.



Figure 4. Side Alpha



*Note:* Adapted from Google. (2009b). [Street view, 1773 Stein Drive, Brentwood, NY].  
<https://bit.ly/47dgUBt>.

Figure 5. Alpha/Delta Corner



*Note:* Adapted from Google. (2022c). [Street view, 1773 Stein Drive, Brentwood, NY].  
<https://bit.ly/46AMl8D>.

The temperature is 33° F with wind from the east northeast at 16 mph with gusts to 24 mph (Weather Underground, 2023). You have been dispatched to 1773 Stein Drive for a report of a residential fire at 06:45. You are the company officer or AIC of the first arriving engine and have your company's typical staffing.

1. What critical factors would you consider when dispatched and during response and what conversations would you have with your crew while responding?

While responding, you hear a command officer and another engine with typical staffing for your agency go enroute. You will arrive from the north on Stein Drive. The second engine will arrive six minutes after you, followed by the command officer. All other units dispatched on the first alarm will arrive after the command officer.

Watch the [incident video](#) (Bradbury, 2023) from 00:05 to 00:50 and examine Figure 6.

Figure 6. Conditions on Arrival



*Note:* Adapted from Bradbury, K. (2023). *Brentwood structure fire on Feb 28, 2023* [video]. <https://bit.ly/3Q64Ryy>.

2. State your initial radio report (IRR) exactly as you would transmit it to dispatch.
3. What specific actions would you take (as the company officer) immediately upon arrival and exiting the apparatus and what task orders you would give your crew?



There are multiple bystanders reporting that the house was recently purchased, and the new owners had been moving in (Zillow, 2023). There is no arrival video of conditions on Side Charlie. Figure 7 illustrates simulated conditions on Side Charlie.

Figure 7. Conditions on Side Charlie Shortly After Arrival



*Note:* Hartin, E. (2023) *1773 Stein Drive Side Charlie Simulation* [Fire Studio 7 digital simulation] adapted from Bradbury, K. (2023). *Brentwood structure fire on Feb 28, 2023* [video]. <https://bit.ly/3Q64Ryy>.

4. Would you change the action you are taking or modify the assignments given to your crew? If so, what task orders would you provide?
5. State your update report exactly as you would transmit it to dispatch.
6. Engine 2 arrives and reports that they are Level 1 at Fairtown Road and Stein Drive. State the tactical assignment you would give them exactly as you would transmit it.
7. Based on the anticipated effectiveness of your tactical operations, state your conditions, actions, and needs (CAN) report that you would provide to the first arriving command officer as part of command transfer to IC #2?

8. What critical factors influenced your initial strategy? Did your strategy change after performing 360-degree reconnaissance and observing conditions on Side Charlie? Why or why not?
9. Did you include the potential for a wind influenced fire as part of your initial radio report or update report? Did wind speed and direction influence your initial hoseline placement? Why or why not?

Watch the [incident video](#) (Fisher, 2023) from 00:50 to 02:30 and examine Figure 8 before answering the next several questions.

Figure 8. Down Electrical Service Drop



Note: Adapted from Bradbury, K. (2023). *Brentwood structure fire on Feb 28, 2023* [video].  
<https://bit.ly/3Q64Ryy>.

10. Did you include the down electrical service drop as part of your update (reported by a bystander)? How would the service drop in contact with the chain link fence (as illustrated in Figure 8) impact the electrical hazard presented at this incident?
11. The presence of PV Pannels was likely masked by flames and smoke at the time the first company arrived on-scene. What other indicators would indicate the presence of this type of electrical hazard (see Figure 9).

Figure 9. Photovoltaic Disconnect



Note: Adapted from Bradbury, K. (2023). *Brentwood structure fire on Feb 28, 2023* [video]. <https://bit.ly/3Q64Ryy>.

12. Reexamine Figures 4, 5, and 7. What interior configuration and floor plan was likely in this house? Based on the location and extent of the fire, would the lower level of the house have been a searchable space with access from Side Charlie? Why or why not?

**Additional Learning:** Watch [\*Tactical Consideration: There Can Be Survivable Spaces on Arrival\*](#) (UL FSRI, 2019) and listen to [\*In Their Own Words. Sean Duffy on Survivability and Search Ops\*](#) (Fire Engineering, 2021). Discuss these concepts with the members of your crew and discuss what you can do to improve the search performance of your company based on your staffing and operational context and how these considerations impact strategic decision-making.

## References

- Bradbury, K. (2023). *Brentwood structure fire on Feb 28, 2023* [video]. Retrieved October 19, 2023, from <https://bit.ly/3Q64Ryy>.
- Fire Engineering (2021). *In Their Own Words. Sean Duffy on Survivability and Search Ops*. Retrieved October 19, 2023, from <https://bit.ly/3S2Vmmr>.
- Google. (2009b). [Street view, 1773 Stein Drive, Brentwood, NY]. Retrieved October 19, 2023, from <https://bit.ly/47dgUBt>.
- Google. (2018a). [Street view, 1773 Stein Drive, Brentwood, NY]. Retrieved October 19, 2023, from <https://bit.ly/3Qm0tgg>.
- Google. (2022c). [Street view, 1773 Stein Drive, Brentwood, NY]. Retrieved October 19, 2023, from <https://bit.ly/46AMl8D>.
- Google. (2023a). [Map, 1773 Stein Drive, Brentwood, NY]. Retrieved October 19, 2023, from <https://bit.ly/3Qi7AGB>.
- Google. (2023b). [Aerial view, 1773 Stein Drive, Brentwood, NY]. Retrieved October 19, 2023, from <https://bit.ly/402l5NT>.
- Hartin, E. (2023) *1773 Stein Drive Side Charlie Simulation* [Fire Studio 7 digital simulation]. Camas, WA: East County Fire and Rescue.
- Mullarkey, M. (2023). Brentwood residence goes ablaze: police. Retrieved October 19, 2023, from <https://bit.ly/3S4b14W>.
- Underwriters Laboratories Fire Safety Research Institute (UL FSRI). (2018). *Tactical Consideration: There Can Be Survivable Spaces on Arrival*. Retrieved October 19, 2023, from <https://bit.ly/3FppUra>.
- Weather Underground (2023). *Ronkonkoma, NY weather history* [historical weather February 28, 2023]. Retrieved October 19, 2023, from <https://bit.ly/493zOMS>.
- Zillow. (2023) 1773 Stein Drive, Bay Shore, NY 11706. Retrieved October 19, 2023, from <https://bit.ly/45BSYX4>.