



In-Station Training

TM 24-20 Apartment Fire



Author

Chief Ed Hartin

Purpose

360-degree reconnaissance is essential to improving situational awareness, but in some cases building size and/or arrangement makes it difficult for the first arriving company to complete this task. If not done by the first arriving company, an effort must be made to complete the 360 as soon as possible during incident operations.

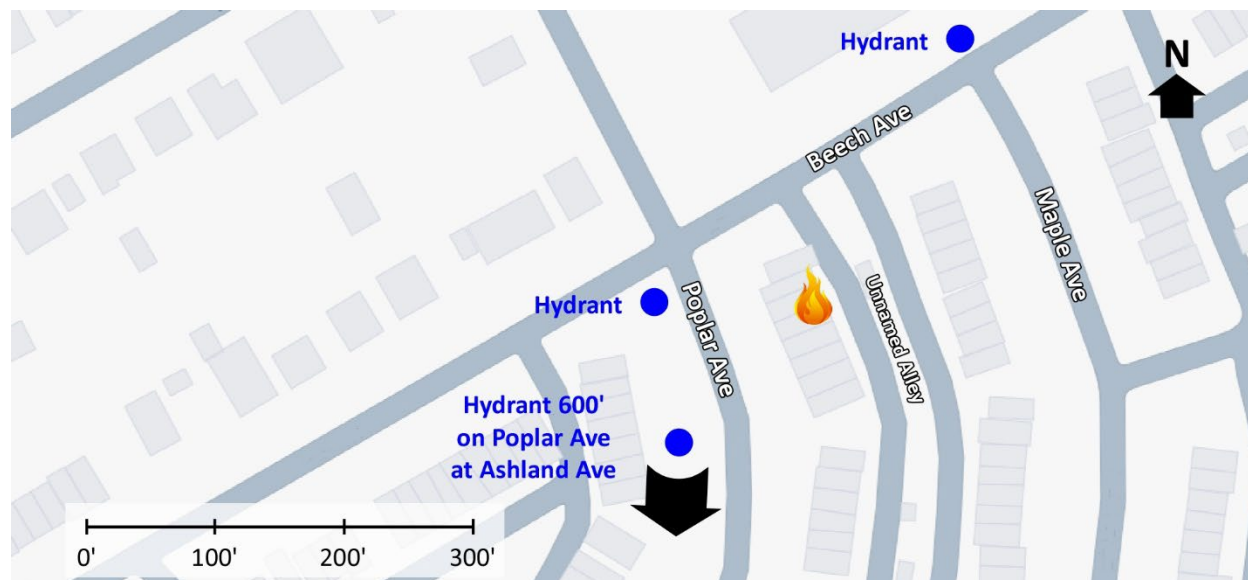
Learning Outcomes

Firefighters and officers perform an effective size-up, select an appropriate strategy, and implement tactics based on the strategic decision-making model.

Conducting the Drill

This incident involved a residential fire at 906 Poplar Ave, Glenolden, Pennsylvania on March 16, 2024, at 18:40 (Feeney Fireground Photography, 2024 & Delco Times, 2024). Review the map and photos (Figures 1-6) to gain an understanding of the area and building involved.

Figure 1. Map of the Incident Area



Note: Adapted from Google. (2024a). [Map, 906 Poplar Ave, Glenolden, PA]. <https://bit.ly/43UUeWc>.

Figure 2. Aerial View



Note: Adapted from Google. (2024b). [Aerial view 906 Poplar Ave, Glenolden, PA].

<https://bit.ly/43C6tH3>.

The closest hydrant is on the corner of Poplar and Beach Avenues with additional hydrants on Poplar Avenue and Beach Avenue as shown in Figure 1.

Figure 3. Side Alpha



Note: Adapted from Google. (2018a). [Street view, 906 Poplar Ave, Glenolden, PA].

<https://bit.ly/43nppsX>.

Figure 4. Side Bravo (Bravo 3 Exposure)



Note: Adapted from Google. (2018b). [Street view, 906 Poplar Ave, Glenolden, PA].
<https://bit.ly/3Po7egK>.

Figure 5. Bravo/Charlie Corner



Note: Adapted from Google. (2018c). [Street view, 906 Poplar Ave, Glenolden, PA].
<https://bit.ly/3TC1D2>.

Figure 6. Side Charlie



Note: Adapted from Google. (2018d). [Street view, 906 Poplar Ave, Glenolden, PA].

<https://bit.ly/4afT6hB>.

The temperature is currently 54° F with wind from the south at 9 mph (Weather Underground, 2024). You have been dispatched to 906 Poplar Avenue for a report of a residential fire at 18:40. You are the company officer or AIC of the first arriving engine and have your company's typical staffing.

1. What critical factors would you consider when dispatched and during response and what conversations would you have with your crew while responding?

You hear a command officer, three other engines, and an advanced life support ambulance with typical staffing for your agency go enroute. You will arrive from the south on Poplar Ave. The second engine will arrive from the same direction five minutes after you. The command officer will arrive shortly after the second engine. All other units dispatched on the first alarm will arrive after the command officer.

Examine Figure 7 illustrating conditions on arrival.

Figure 7. Conditions on Arrival



Note: Adapted from Hartin, E. (2024) *Glenolden apartment fire simulation* [Fire Studio 7 digital simulation]. Camas, WA: East County Fire and Rescue.

2. State your initial radio report (IRR) exactly as you would transmit it to dispatch.

3. What specific actions would you take (as the company officer) immediately upon arrival and exiting the apparatus and what task orders you would give your crew?

Occupants report that everyone is out, and the fire is in a bedroom on the second floor. If you would perform 360-degree reconnaissance (remember that this is a middle of the row unit), have a look at Figure 8. If you would not perform a 360 based on size and arrangement, don't look at Figure 8 until you get to that point in the training.

4. Would you change the action you are taking or modify the assignments given to your crew? If so, what task orders would you provide?

5. State your update report exactly as you would transmit it to dispatch.
6. Engine 2 arrives and reports that they are Level 1 at Polar Avenue and Ashland Avenue . State the tactical assignment you would give them exactly as you would transmit it.
7. Based on the anticipated effectiveness of your tactical operations, state your conditions, actions, and needs (CAN) report that you would provide to the first arriving command officer as part of command transfer to IC #2.

Reflect on your strategic decision-making and responses to questions 1 through 7 before answering the next six questions.

8. What was the problem?
9. What was getting in the way of achieving your tactical priorities?
10. Was there anything in this incident that could have hurt or killed you (right now)?
11. Was it reasonable to believe that the building was occupied?
12. Was there searchable space?
13. If you believed it was reasonable that the building was occupied and there was searchable space, what could you do about it?

Before answering the next several questions, watch the first 00:30 of the [incident video](#) (Feeney Fireground Photography, 2024) and examine Figure 8, illustrating conditions on Side Charlie when the first company arrived.

Figure 8. Arrival Conditions on Side Charlie



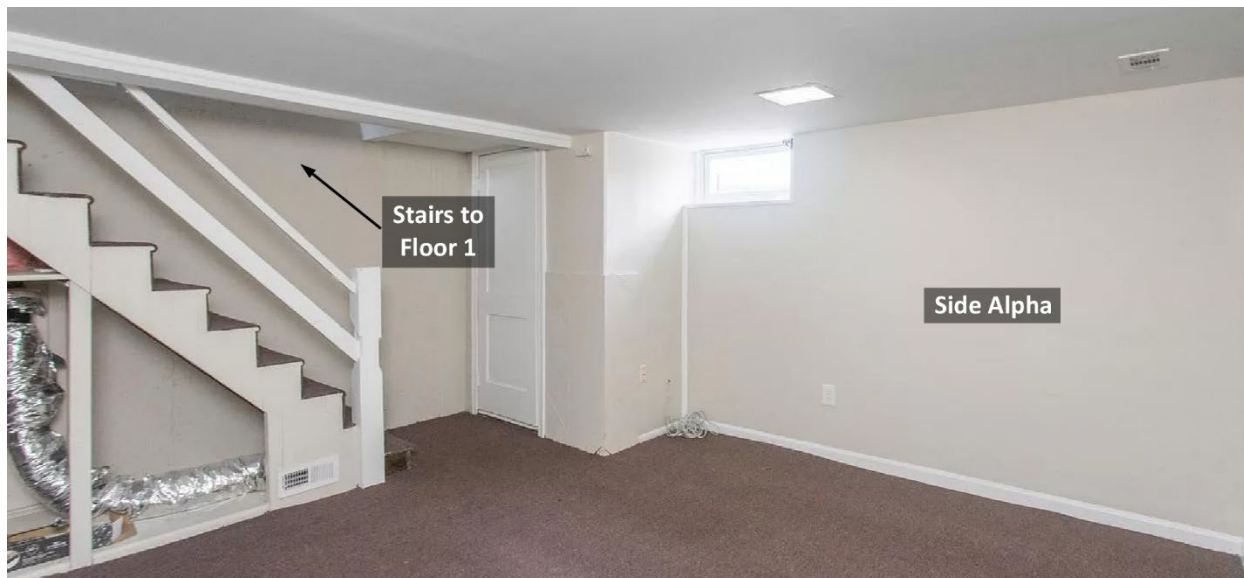
Feeney Fireground Photography. (2024). *Pre-arrival-working fire 906 Poplar Darby Township PA*. Retrieved April 10, 2024, from <https://bit.ly/3PkrkID>.

14. If you arrived from the northeast on Beach Avenue (seeing Side Charlie on approach) would you have positioned your apparatus in the unnamed alley and made a quick hit prior to initiating interior operations? Why or why not?
15. If you initiated interior attack through the walkout basement, what challenges would you have anticipated in stretching to the fire location on Floor 2?
16. If operating from the unnamed alley, would you have stretched a charged line from the exterior or stretched to Floor 1 prior to charging the attack line? Why or why not?

Additional Learning: Read *Dry & Wet Hoseline Stretches* (FirefighterNation Staff, 2012), examine Figures 9-11 illustrating the interior arrangement of the apartment involved in this 10-Minute Training. Discuss attack line deployment with your crew and under what conditions you would stretch a dry line into the

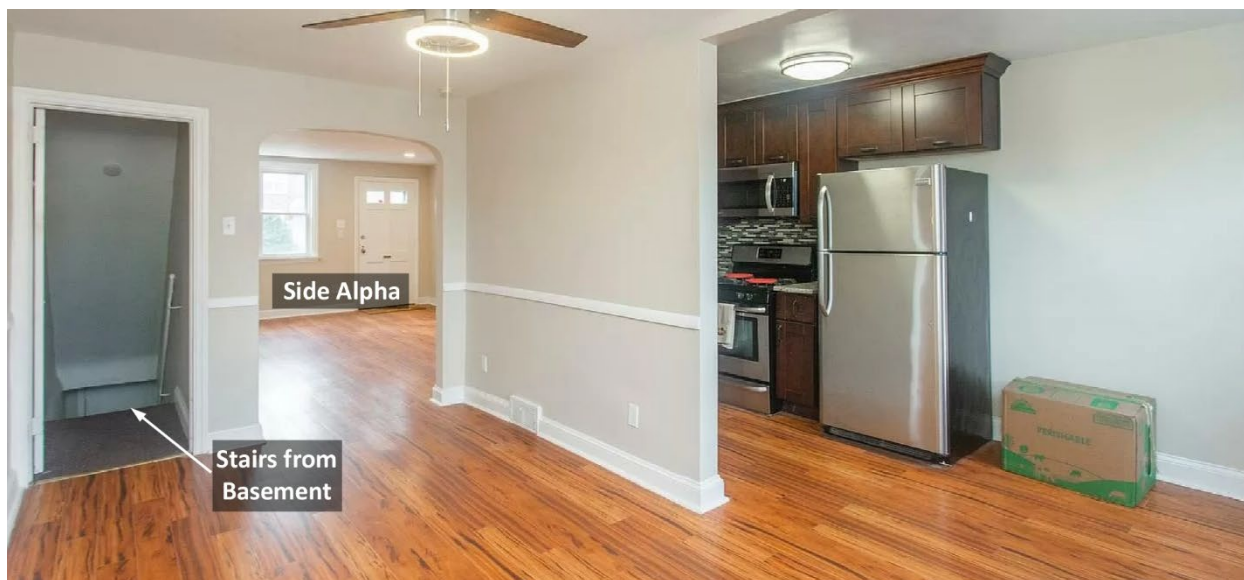
fire building. Get out and stretch some hose! Work on deploying an attack line for a quick hit on an upper floor fire and a second line for interior attack (possibly stretching to the floor below the fire dry prior to charging it). Consider trying it both ways (charged from the exterior and dry to the floor below and compare time to water on the fire for each evolution).

Figure 9. Basement



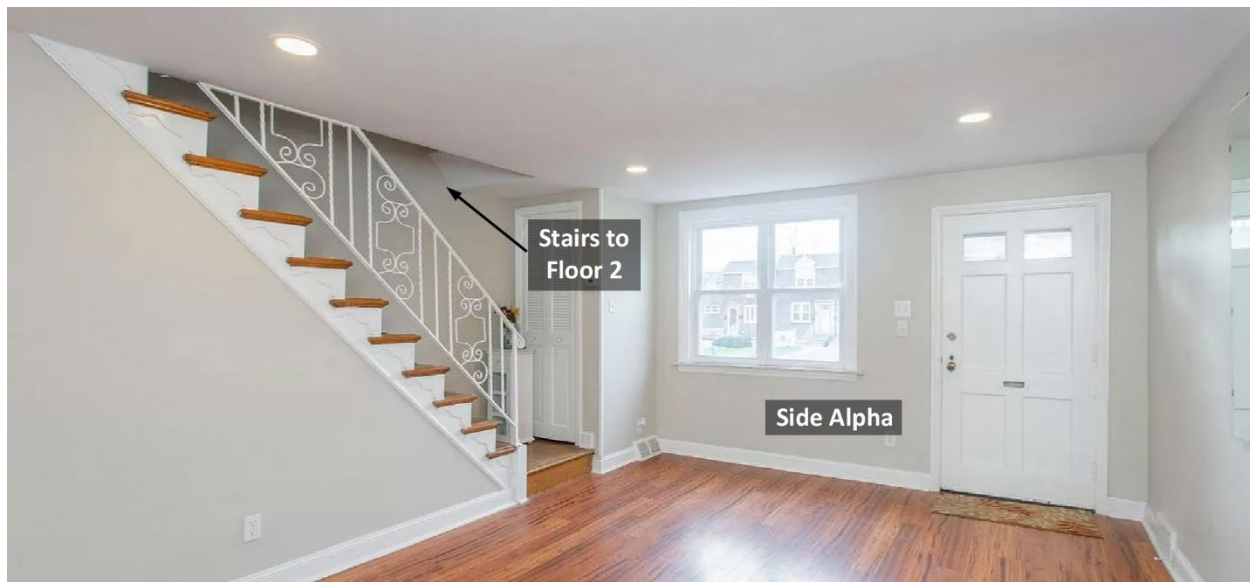
Zillow. (2021). 906 Poplar Ave, Glenolden, PA 19036. Retrieved April 10, 2024, from <https://bit.ly/3x79Vgj>.

Figure 10. Floor 1 Kitchen



Zillow. (2021). 906 Poplar Ave, Glenolden, PA 19036. Retrieved April 10, 2024, from <https://bit.ly/3x79Vgj>.

Figure 11. Floor 1 Living Room



Zillow. (2021). 906 Poplar Ave, Glenolden, PA 19036. Retrieved April 10, 2024, from <https://bit.ly/3x79Vgj>.

References

Delco Times. (2024). Crews called to house fire in Darby Township. Retrieved April 10, 2024, from <https://bit.ly/3VTJRzD>.

Feeney Fireground Photography. (2024). Pre-arrival-Working Fire 906 Poplar Darby Township PA. Retrieved April 10, 2024, from <https://bit.ly/3PkrkID>.

FirefighterNation Staff. (2012). Dry & Wet Hoseline Stretches. Retrieved April 10, 2024, from <https://bit.ly/44JiNtu>.

Google. (2018a). [Street view, 906 Poplar Ave, Glenolden, PA]. Retrieved April 10, 2024, from <https://bit.ly/43nppsX>.

Google. (2018b). [Street view, 906 Poplar Ave, Glenolden, PA]. Retrieved April 10, 2024, from <https://bit.ly/3Po7egK>.

Google. (2018c). [Street view, 906 Poplar Ave, Glenolden, PA]. Retrieved April 10, 2024, from <https://bit.ly/3TCl1D2>.

Google. (2018d). [Street view, 906 Poplar Ave, Glenolden, PA]. Retrieved April 10, 2024, from <https://bit.ly/4afT6hB>.

Google. (2024a). [Map, 906 Poplar Ave, Glenolden, PA]. Retrieved April 10, 2024, from <https://bit.ly/43UUeWc>.

Google. (2024b). [Aerial view 906 Poplar Ave, Glenolden, PA]. Retrieved April 10, 2024, from <https://bit.ly/43C6tH3>.

Hartin, E. (2024) *Glenolden apartment fire simulation* [Fire Studio 7 digital simulation]. Camas, WA: East County Fire and Rescue.

Weather Underground (2024). *Essington, PA weather history* [historical weather March 15, 2024]. Retrieved April 9, 2024, from <https://bit.ly/3xr3S6B>.

Zillow. (2021). 906 Poplar Ave, Glenolden, PA 19036. Retrieved April 10, 2024, from <https://bit.ly/3x79Vgj>.