



In-Station Training

TM 24-23 Residential Fire



Author

Chief Ed Hartin

Purpose

In some cases, building design presents straightforward clues as to floor plan and the location of bedrooms. In other cases, determining bedroom location (an important consideration in primary search) is more complex and makes coordination of fire control and search operations challenging.

Learning Outcomes

Firefighters and officers perform an effective size-up, select an appropriate strategy, and implement tactics based on the strategic decision-making model.

Conducting the Drill

This incident involved a residential fire at 5 William Penn Drive, Setauket, New York on January 22, 2019, at 05:50 (Fire News, 2019 & The Suburban Fire Marshal, 2019). Review the map and photos (Figures 1-5) to gain an understanding of the area and building involved.

Figure 1. Map of the Incident Area



Note: Adapted from Google. (2024a). [Map, 5 William Penn Drive, Setauket, NY]. <https://bit.ly/449iQdB>.

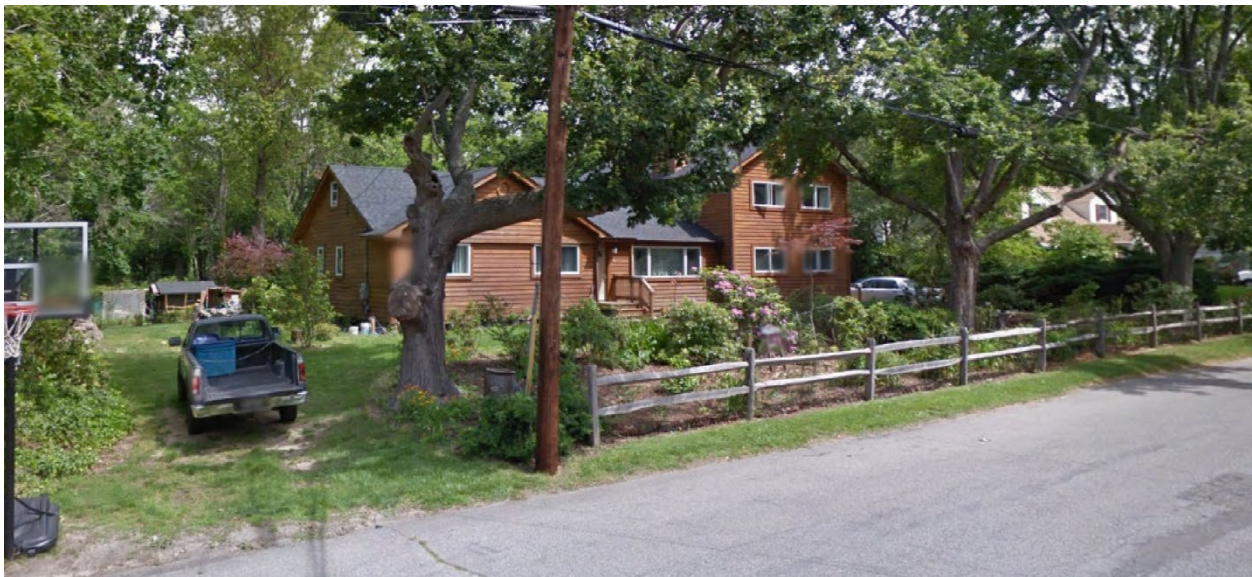
Figure 2. Aerial View



Note: Adapted from Google. (2024b). [Aerial view 5 William Penn Drive, Setauket, NY].
<https://bit.ly/3y35T9d>.

There are multiple hydrants adjacent to the fire location on Orangethorpe Avenue and South Pacific Drive as shown in Figure 1.

Figure 3. Alpha/Bravo Corner



Note: Adapted from Google. (2012a). [Street view, 5 William Penn Drive, Setauket, NY].
<https://bit.ly/3We07Kg>.

Figure 4. Side Alpha



Note: Adapted from Google. (2012b). [Street view, 5 William Penn Drive, Setauket, NY].
<https://bit.ly/44d9SfH>.

Figure 5. Alpha/Delta Corner



Note: Adapted from Google. (2012c). [Street view, 5 William Penn Drive, Setauket, NY].
<https://bit.ly/3UouRYu>.

The temperature is currently 15° F with wind from the northwest at 10 mph (Weather Underground, 2019). You have been dispatched to William Penn Drive near Yorkshire Avenue for a residential fire. You are the company officer or AIC of the first arriving engine and have your company's typical staffing.

1. What critical factors would you consider when dispatched and during response and what conversations would you have with your crew while responding?

Dispatch provides an update that multiple calls are being received of a residential fire on William Penn Drive near Yorkshire Avenue. You hear a command officer, three other engines, and an advanced life support ambulance with typical staffing for your agency go enroute. You will arrive from the west on William Penn Drive. The second engine will arrive from the same direction six minutes after you. The command officer will arrive shortly after the second engine. All other units dispatched on the first alarm will arrive after the command officer.

You arrive at 5 William Penn Drive and observe the conditions illustrated in Figure 6. Watch the [incident video](#) (Fire News, 2019) from 00:10 to 00:40 illustrating conditions on arrival.

Figure 6. Conditions on Arrival



Note: Adapted from The Suburban Fire Marshal. (2019). *Setauket FD-house fire on William Penn Drive*. <https://bit.ly/49X1Kkg>.

2. State your initial radio report (IRR) exactly as you would transmit it to dispatch.

3. What specific actions would you take (as the company officer) immediately upon arrival and exiting the apparatus and what task orders you would give your crew?

A small volume of smoke is pushing at moderate velocity from the eaves Side Delta. Conditions on Side Charlie are consistent with those on Side Alpha (well developed fire is visible through intact sliding glass doors in the center section of the house). A moderate amount of smoke is pushing from Side Charlie and is being pushed over the roof towards Side Alpha. There is little smoke showing from Side Bravo.

4. Would you change the action you are taking or modify the assignments given to your crew? If so, what task orders would you provide?
5. State your update report exactly as you would transmit it to dispatch.
6. Engine 2 arrives and reports that they are Level 1 on a hydrant on Quaker Path. State the tactical assignment you would give them exactly as you would transmit it.
7. Based on the anticipated effectiveness of your tactical operations, state your conditions, actions, and needs (CAN) report that you would provide to the first arriving command officer as part of command transfer to IC #2.

Reflect on your strategic decision-making and responses to questions 1 through 7 before answering the next six questions.

8. What was the problem?
9. What was getting in the way of achieving your tactical priorities?
10. Was there anything in this incident that could have hurt or killed you (right now)?

11. Was it reasonable to believe that the building was occupied?
12. Was there searchable space?
13. If you believed it was reasonable that the building was occupied and there was searchable space, what could you do about it?

Watch the [incident video](#) (Fire News, 2019) from 00:40 to 02:40 before answering the next several questions.

14. The initial attack line appears to have been stretched to the door on Side Alpha (directly accessing the main body of fire). Was this consistent with your course of action? If not, what critical factors influenced your initial attack position?
15. If you answered questions 11 and 12 in the affirmative (it was reasonable that the building was occupied and there was searchable space), what steps did you take to coordinate fire control in the center section of the house and search in the less involved or uninvolved areas? What critical factors influenced your decisions related to search?
16. How did the wind speed and direction impact your strategic and tactical decision-making? If your company was operating on the interior, how would wind speed and direction have influenced your decisions about ventilation (think specifically about coordination with fire control and search)?

Additional Learning: Given the size of the house in this incident, a 200' long attack line would provide adequate length if entry was made through either the door on Side Alpha or Side Delta. Depending on exterior obstructions, a 200' long attack line may have been a bit short if entry was made through Side Charlie (the upwind side of the building). Discuss options for deploying attack lines longer than the preconnected lines carried on your apparatus with your crew. Discuss the advantages and disadvantages of long 1 ¾" attack lines, use of a horizontal standpipe with wyed lines, and a leader line as a horizontal

standpipe (single 1 ¾" line off larger diameter (2 ½" or 3") hose. Get out and stretch some hose, practicing deployment of 300'-400' attack lines and determine which options provide for quickest water on the fire.

References

- Fire News. (2019). *Fast moving fire guts house in Setauket NY* [video]. Retrieved May 4, 2024, from <https://bit.ly/4b31IIW>.
- Google. (2012a). [Street view, 5 William Penn Drive, Setauket, NY]. Retrieved May 4, 2024, from <https://bit.ly/3WeO7Kg>.
- Google. (2012b). [Street view, 5 William Penn Drive, Setauket, NY]. Retrieved May 4, 2024, from <https://bit.ly/44d9SfH>.
- Google. (2012c). [Street view, 5 William Penn Drive, Setauket, NY]. Retrieved May 4, 2024, from <https://bit.ly/3UouRYu>.
- Google. (2024a). [Map, 5 William Penn Drive, Setauket, NY]. Retrieved May 4, 2024, from <https://bit.ly/449iQdB>.
- Google. (2024b). [Aerial view 5 William Penn Drive, Setauket, NY]. Retrieved May 4, 2024, from <https://bit.ly/3y35T9d>.
- The Suburban Fire Marshal. (2019). *Setauket FD-house fire on William Penn Drive*. <https://bit.ly/49X1Kkg>.
- Weather Underground (2019). *Ronkonkoma, NY weather history* [historical weather January 22, 2019]. Retrieved May 4, 2024, from <https://bit.ly/3JOFZZu>.