



# In-Station Training

## TM 24-24 Residential Fire-Entrapment



### Author

Chief Ed Hartin

### Purpose

Arriving and operating at a fire when occupants are visible and in imminent danger is extremely stressful. There is tremendous moral pressure to act, and the clock is ticking. Stress is also increased when there are many vocal bystanders.

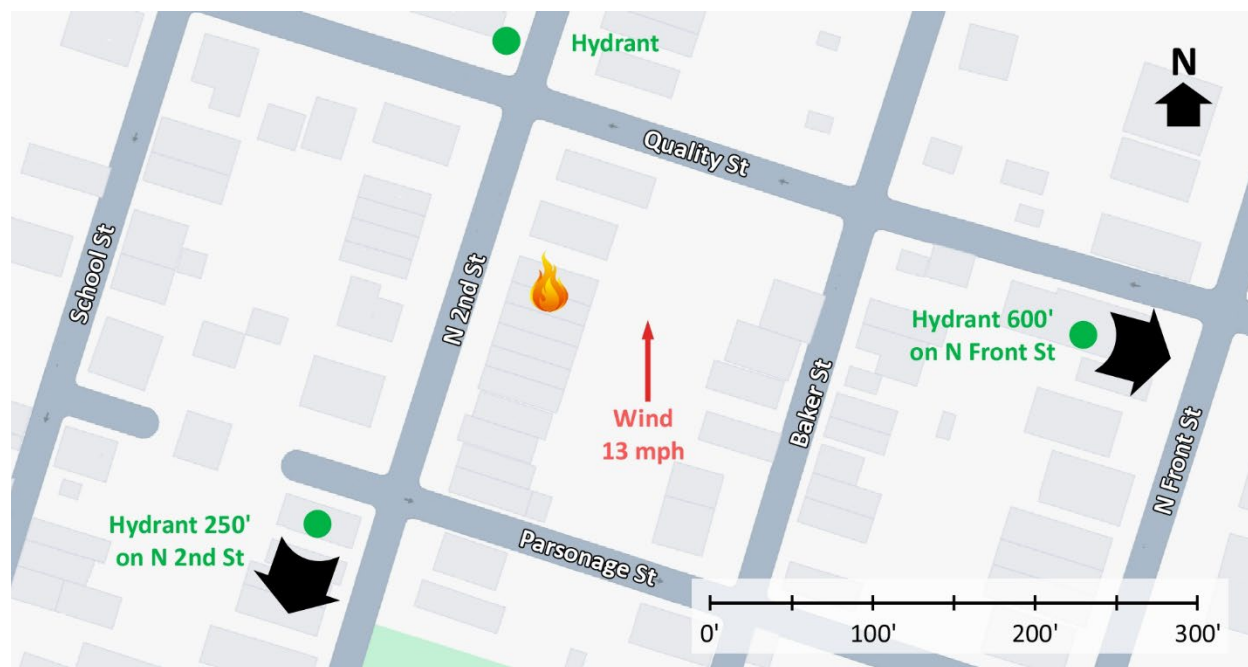
### Learning Outcomes

Firefighters and officers perform an effective size-up, select an appropriate strategy, and implement tactics based on the strategic decision-making model.

### Conducting the Drill

This incident involved a residential (duplex) fire at 619-609 N Second Street, Minersville, Pennsylvania on April 14, 2024, at 12:45 (Coal Region Canary, 2024 & Devlin & Marciano, 2024a & 2024b). Review the map and photos (Figures 1-8) to gain an understanding of the area and building involved.

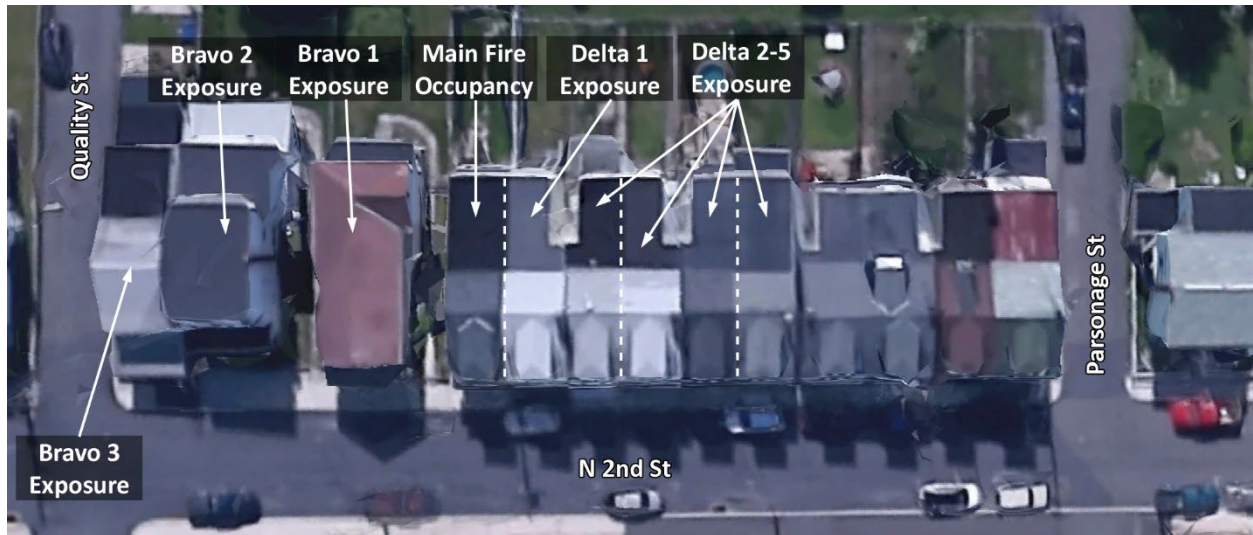
Figure 1. Map of the Incident Area



Note: Adapted from Google. (2024a). [Map, 619 N Second Street, Minersville, PA].

<https://bit.ly/3QvOtZi>.

Figure 2. Aerial View



Note: Adapted from Google. (2024b). [Aerial view 619 N Second Street, Minersville, PA]. <https://bit.ly/4a6hvpe>.

There is a hydrant 250' to the south of the incident location on N 2<sup>nd</sup> Street and an additional hydrant to the north of the incident on N 2<sup>nd</sup> Street at Quality Street as illustrated in Figure 1. *Hydrant locations are estimated based on an aerial photograph.*

Figure 3. Alpha/Bravo Corner Main Fire Occupancy and Side Alpha Delta 1-3 Exposures

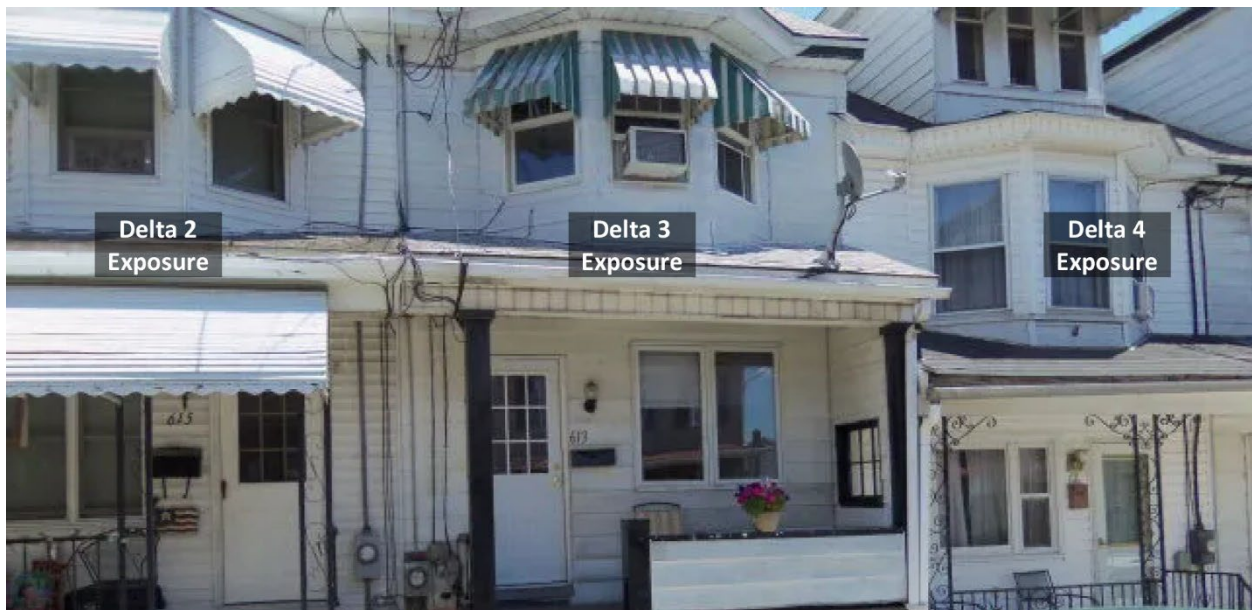


Note: Adapted from Redfin. (2021). 619 N 2nd St, Minersville, PA. 17954. <https://bit.ly/3UvqjWg>. Zillow (2021a). 615 N 2nd St, Minersville, PA. 17954. <https://bit.ly/3ydCEAB>.



The buildings involved in this incident were side by side, attached duplexes. Figure 3 illustrates the Alpha/Bravo corner of the main fire occupancy (reported address) and Side Alpha of the Delta 1, 2, and 3 Exposures. The configuration of the Delta 1 occupancy mirrors the main fire occupancy. However, as it is attached to the Delta 2 Exposure, the only windows are on the Alpha and Charlie Sides of this exposure.

Figure 4. Delta 2-4 Exposures



Note: Adapted from Realtor.com (2021). 613 N 2nd St, Minersville, PA. 17954. <https://bit.ly/3ULzc9m>.

Figure 5. Delta 4-7 Exposures



Note: Adapted from Zillow (2021b). 611 N 2nd St, Minersville, PA 17954. <https://bit.ly/3WsRe1j>. Zillow (2023). 607 N 2nd St, Minersville, PA 17954. <https://bit.ly/3WsRe1j>.



Figure 6. Side Bravo Main Fire Occupancy and Bravo 1-2 Exposures



Note: Adapted from Redfin. (2014). 625 N 2nd St, Minersville, PA 17954. <https://bit.ly/4bm3yVo>.

Figure 7. Bravo 2-3 Exposures Side Alpha



Note: Adapted from Zillow. (2022). 629 N 2nd St, Minersville, PA 17954. <https://bit.ly/4dsGohP>.

Figure 8. Bravo 1-3 Exposures Side Charlie



*Note:* Adapted from Zillow. (2022). 629 N 2nd St, Minersville, PA 17954. <https://bit.ly/4dsGohP>.

The temperature is currently 67° F with wind from the south at 13 mph (Weather Underground, 2024). You have been dispatched to 619 N 2<sup>nd</sup> Street for a residential fire. You are the company officer or AIC of the first arriving engine and have your company's typical staffing.

1. What critical factors would you consider when dispatched and during response and what conversations would you have with your crew while responding?

You hear a command officer, three other engines, and an advanced life support ambulance with typical staffing for your agency go enroute. You will arrive from the south on North 2<sup>nd</sup> Street. The second engine will arrive from the same direction three minutes after you. The command officer will arrive shortly after the second engine. All other units dispatched on the first alarm will arrive after the command officer. As you turn north on North 2<sup>nd</sup> Street (approximately five blocks from the incident address), you observe a significant column of smoke on the horizon and the dispatcher provides an update that they are receiving calls for multiple buildings involved.

Watch the first 00:35 of the [incident video](#) (Coal Region Canary, 2024) and examine Figure 9 illustrating conditions on arrival.



Figure 9. Conditions on Arrival



Note: Adapted from Coal Region Canary. (2024). *Neighbor pulls man from burning home in Minersville* [video]. <https://bit.ly/3Ws9ilQ>

2. State your initial radio report (IRR) exactly as you would transmit it to dispatch.
  
3. What specific actions would you take (as the company officer) immediately upon arrival and exiting the apparatus and what task orders you would give your crew?

A large volume of smoke is pushing from Floors 1-3 of the main fire occupancy and Delta 1 Exposure. Smoke is also visible over the roofline from Side Charlie. Continue watching the [incident video](#) (Coal

Region Canary, 2024) from 00:35 to 05:00 as you answer questions 4 through 7 (this provides context for conditions once you exit the cab of the apparatus).

4. Would you change the action you are taking or modify the assignments given to your crew? If so, what task orders would you provide?
5. State your update report exactly as you would transmit it to dispatch.
6. Engine 2 arrives and reports that they are Level 1 on a hydrant on North 2<sup>nd</sup> Street, south of the incident. State the tactical assignment you would give them exactly as you would transmit it.
7. Based on the anticipated effectiveness of your tactical operations, state your conditions, actions, and needs (CAN) report that you would provide to the first arriving command officer as part of command transfer to IC #2.

Reflect on your strategic decision-making and responses to questions 1 through 7 before answering the next six questions.

8. What was the problem?
9. What was getting in the way of achieving your tactical priorities?
10. Was there anything in this incident that could have hurt or killed you (right now)?
11. Was it reasonable to believe that the Main Fire Occupancy and Exposure Delta 1 were occupied (in addition to the visible occupants in the window and on the roof)?
12. Was there searchable space?

13. If you believed it was reasonable that Main Fire Occupancy and Exposure Delta 1 were occupied and there was searchable space, what could you do about it?

Watch the remainder of the [incident video](#) (Coal Region Canary, 2024) before answering the next several questions.

14. The first arriving engine at this incident was presented with multiple challenges, a well-developed and rapidly growing fire, wind from the south at 13 mph, two trapped occupants (one inside a Floor 3 window and the other on the roof of Exposure Delta 2), unknown status of occupants in the main fire occupancy and exposures, and potential fire spread to exposures. How did you address these multiple priorities? What critical factors influenced your choice of tactics and sequence of operations?
15. There were multiple problems during the initial stages of this incident including apparatus positioning and possible malfunction (or operator error) related to the first arriving engine. Consider what factors may have influenced potential for malfunction or operator error. What steps can you take to reduce potential adverse impacts on tactical operations from these types of occurrences?

Watch the second [incident video](#) (The Shenandoah Sentinel, 2024) showing conditions and incident operations on Side Charlie later in the incident. Also read *Hero recalls horrifying moments that lead to the rescue of two people from a burning building in Minersville* (Devlin & Marciano, 2024b).

The cause of the fire was unidentified when this 10-Minute Training was developed. However, the origin was identified as the rear porch of the main fire occupancy. This incident eventually involved three duplexes, the main fire occupancy and five exposures on Side Delta from 619 to 609 North Second Street. In addition, flying brands ignited a roof fire on Exposure Bravo 3 at 629 N Second Street. The second victim (male) pulled from Floor 3 by the civilian died from his injuries several weeks after the incident (Skook News, 2024). The condition of the first victim who had exited the Floor 3 window on her own but appeared to be unresponsive on the roof was not reported.



**Additional Learning:** The tactical capability of the first arriving company is substantially impacted by staffing. However, regardless of staffing, skills proficiency minimizes reflex time and maximizes the tactical capability of the available company staffing.

Get out with your company and practice the following task level skills:

- Deploy a portable ladder for rescue.
- Deploy an attack line to provide protection for crews engaged in rescue operations (look at the smoke conditions on Floors 1 and 2, Side Alpha in the first incident video for motivation).
- Integrate these two tasks in succession, varying which task is performed first.

Practicing moving an injured or unconscious occupant onto the ladder and to the ground presents the need for fall protection (for the victim) based on WAC 296-305-05502 when above 10'. East County Fire and Rescue is working on the development of a prop to allow practice of these skills at or below the 10' level.

## References

- Coal Region Canary. (2024). *Neighbor pulls man from burning home in Minersville* [video]. Retrieved May 5, 2024, from <https://bit.ly/3Ws9iIQ>.
- Devlin, R. & Marciano, A. (2024a). *2 hurt, more than dozen displaced by fire in Minersville*. Retrieved May 5, 2024, from <https://bit.ly/4bHkZ35>.
- Devlin, R. & Marciano, A. (2024b). *Hero recalls horrifying moments that lead to the rescue of two people from a burning building in Minersville*. Retrieved May 5, 2024, from <https://bit.ly/4b2rdKB>.
- Google. (2024a). [Map, 619 N Second Street, Minersville, PA]. Retrieved May 5, 2024, from <https://bit.ly/3QvOtZi>.
- Google. (2024b). [Aerial view 619 N Second Street, Minersville, PA Y]. Retrieved May 5, 2024, from <https://bit.ly/4a6hvpe>.
- Realtor.com (2021). 613 N 2nd St, Minersville, PA. 17954. Retrieved May 4, 2024, from <https://bit.ly/3ULzc9m>.
- Redfin. (2014). *625 N 2nd St, Minersville, PA 17954*. Retrieved May 5, 2024, from <https://bit.ly/4bm3yVo>.
- Redfin. (2021). *619 N 2nd St, Minersville, PA. 17954*. Retrieved May 4, 2024, from <https://bit.ly/3UvqJWq>.
- Skook News. (2024). *Minersville man passes away from injuries sustained in fire*. Retrieved May 5, 2024, from <https://bit.ly/4doL60f>.

The Shenandoah Sentinel. (2024). *House fire - Minersville - 4/14/2024* [video]. Retrieved May 5, 2024, from <https://bit.ly/3QvDAH0>.

The Shenandoah Sentinel. (2024). *House fire-Minersville-4.14.2024*. Retrieved May 5, 2024, from <https://bit.ly/3QvDAH0>.

Weather Underground (2019). *Allentown, PA weather history* [historical weather April 14, 2024]. Retrieved May 5, 2024, from <https://bit.ly/4bllvIO>,

Zillow (2021a). *615 N 2nd St, Minersville, PA. 17954*. Retrieved May 4, 2024, from <https://bit.ly/3ydCEAB>.

Zillow (2021b). *611 N 2nd St, Minersville, PA 17954*. Retrieved May 4, 2024, from <https://bit.ly/3WsRe1j>.

Zillow (2023). *607 N 2nd St, Minersville, PA 17954*. Retrieved May 4, 2024, from <https://bit.ly/3WsRe1j>.

Zillow. (2022). *629 N 2nd St, Minersville, PA 17954*. Retrieved May 5, 2024, from <https://bit.ly/4dsGohP>.