



In-Station Training

TM 24-26a Commercial Fire



Author

Chief Ed Hartin

Purpose

Firefighters and officers base action on current and expected fire behavior, structural stability, and the capability of available resources impacted by time as a key element of the rules of engagement. Consider the impact of these critical factors in the incident examined in this 10-Minute Training.

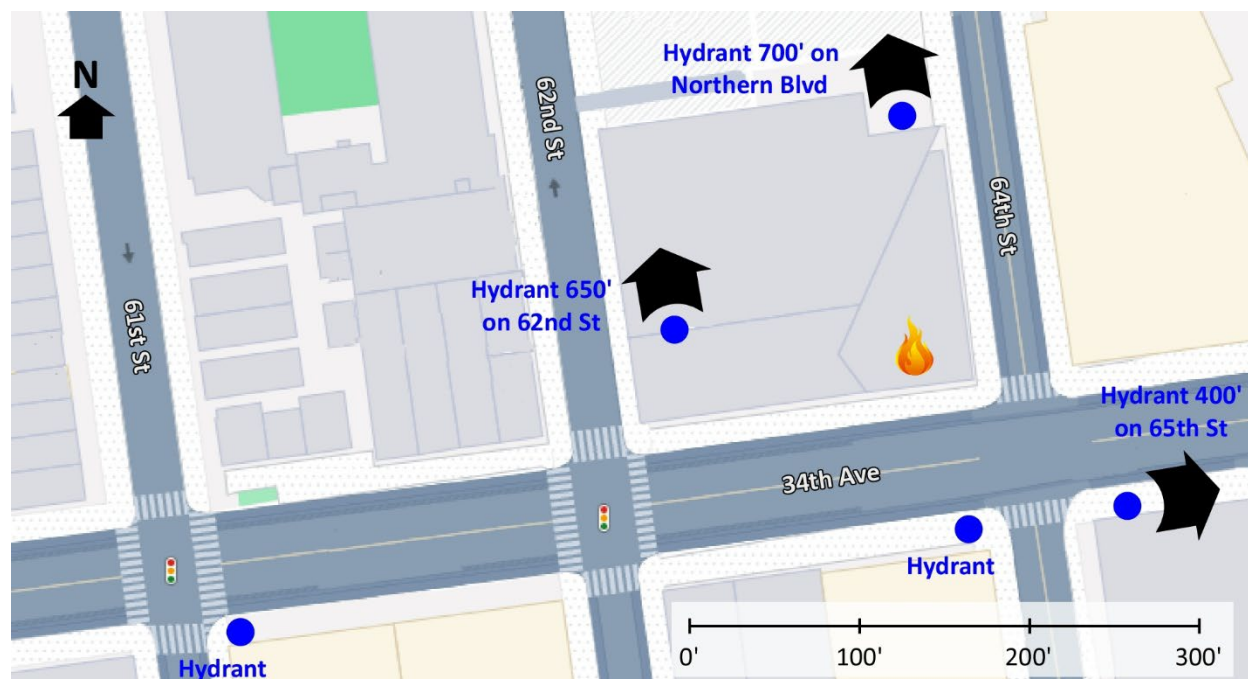
Learning Outcomes

Command officers perform effective ongoing size-up; select an appropriate strategy, and implement tactics based on the strategic decision-making model.

Conducting the Drill

This incident involved a commercial fire at MS Auto Repairs at 62-15 34th Avenue in New York (Queens), New York on November 15, 2023, at 22:42 (Perry, 2023 & LLN NYC, 2023). Review the map and photos (Figures 1-8) to gain an understanding of the area and building involved.

Figure 1. Map of the Incident Area

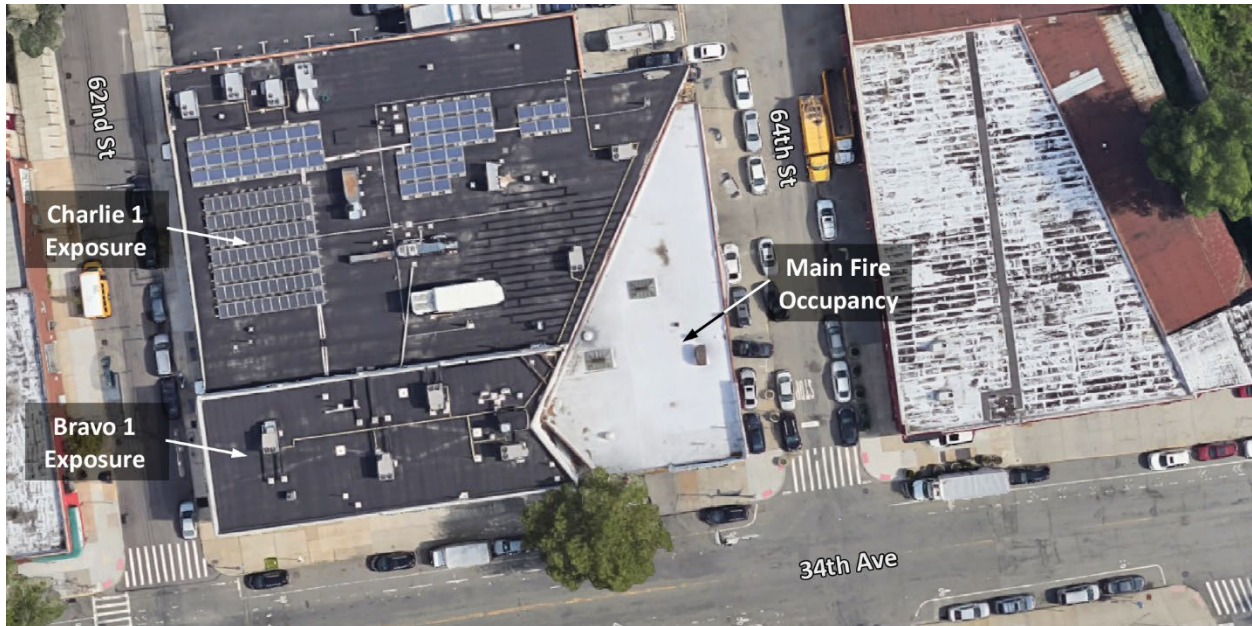


Note: Adapted from Google. (2023a). [Map, 62-15 34th Ave, Woodside, NY 11377].

<https://bit.ly/3yonbho>.

The closest hydrant is across the street from the Main Fire Occupancy on 34th Avenue. Additional hydrants are in the immediate vicinity as illustrated in Figure 1. An additional hydrant (not shown on the map) is located 400' to the south on 64th Street).

Figure 2. Aerial View



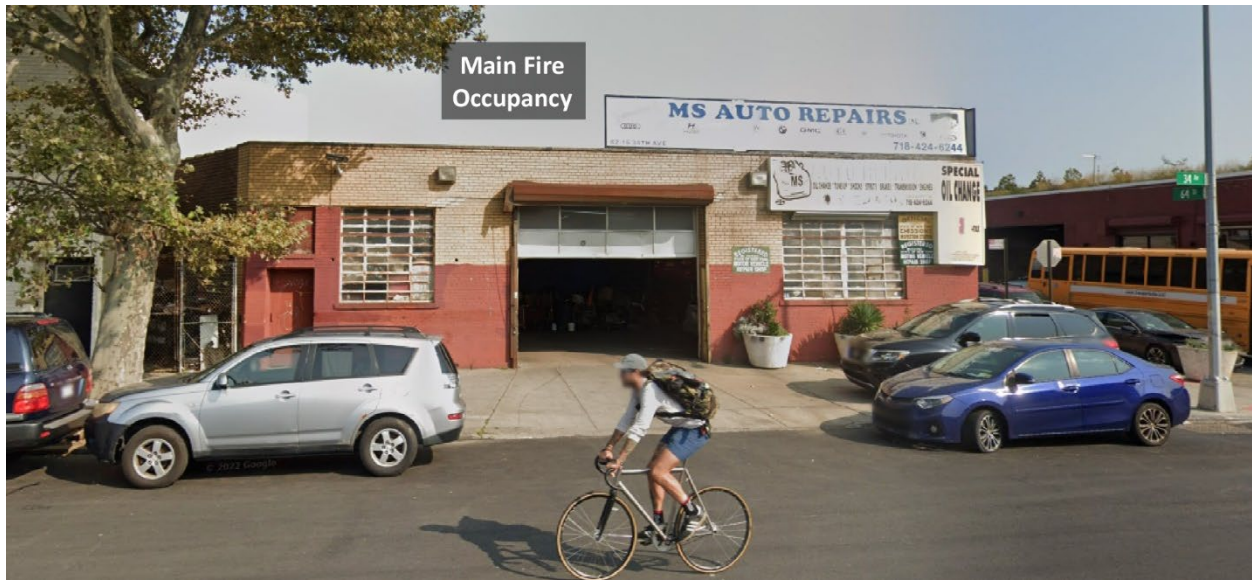
Note: Adapted from Google. (2023b). [Aerial view 62-15 34th Ave, Woodside, NY 11377].
<https://bit.ly/3yoN40t>.

Figure 3. Alpha/Bravo Corner from 34th Avenue



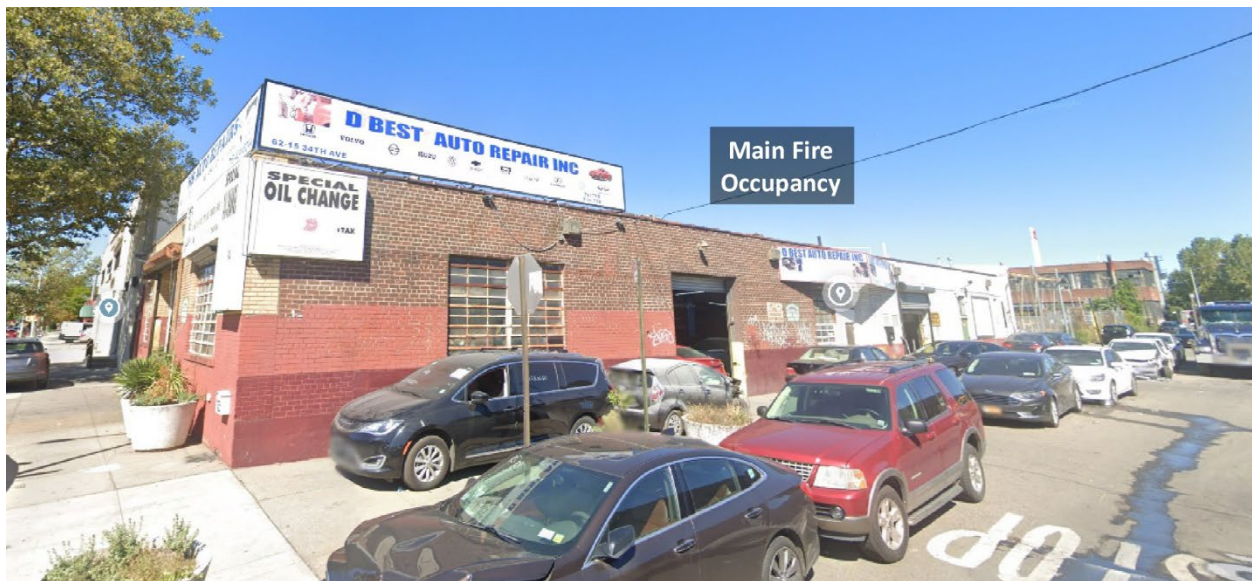
Note: Adapted from Google. (2022a). [Street view 62-15 34th Ave, Woodside, NY 11377].
<https://bit.ly/44PV8Dv>.

Figure 4. Side Alpha from 34th Avenue



Note: Adapted from Google. (2022b). [Street view 62-15 34th Ave, Woodside, NY 11377].
<https://bit.ly/3yiSFVO>.

Figure 5. Alpha/Delta Corner from 64th Street



Note: Adapted from Google. (2022c). [Street view 62-15 34th Ave, Woodside, NY 11377].
<https://bit.ly/4bKvMti>.

Figure 6. Charlie/Delta Corner from 64th Street



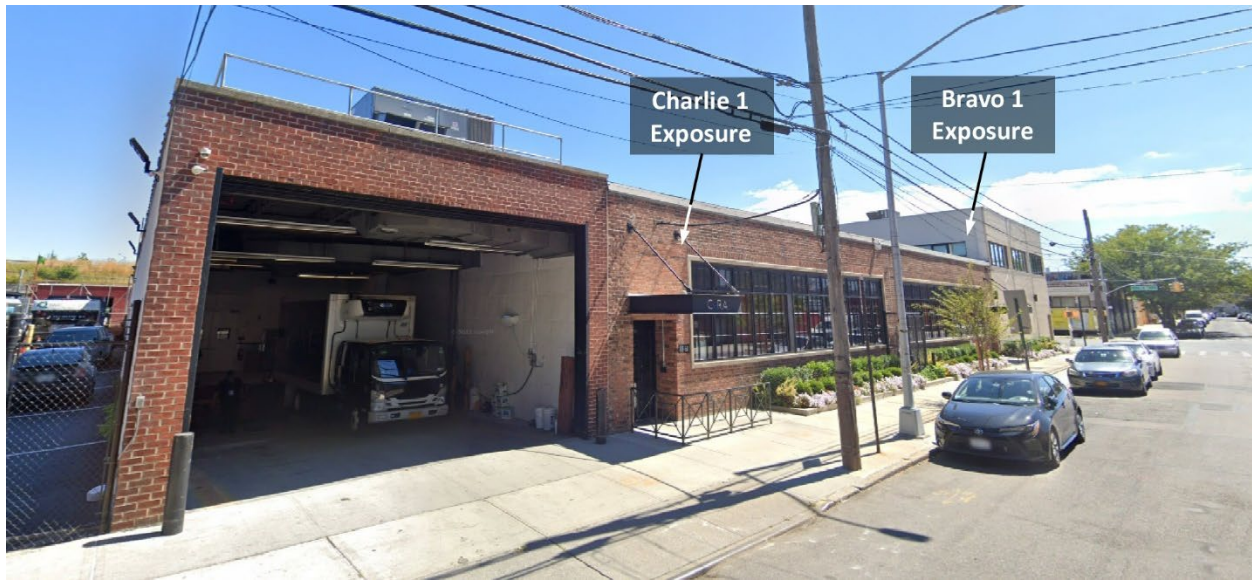
Note: Adapted from Google. (2023d). [Street view 62-15 34th Ave, Woodside, NY 11377].
<https://bit.ly/3V95MSV>.

Figure 7. Charlie Delta Corner 3D Aerial View



Note: Adapted from Google. (2024c). [3d aerial view 62-15 34th Ave, Woodside, NY 11377].
<https://bit.ly/4bmgt9>.

Figure 8. Bravo 1 and Charlie 1 Exposures from 62nd Street



Note: Adapted from Google. (2022e). [Street view 62-15 34th Ave, Woodside, NY 11377].
<https://bit.ly/3wvjlTe>.

You have been dispatched to 34th Avenue and 64th Street for a commercial fire with reported smoke from an auto shop. You are responding to this incident as the first arriving command officer. Temperature is 50° F with wind from the southwest at 8 mph (Weather Underground, 2023). While responding you hear four engines, an advanced life support (ALS) ambulance, and a second command officer enroute. The engines have staffing typical of your agency.

The first engine will arrive from the west on 34th Avenue. The second engine and ALS ambulance will arrive from the east on 34th Avenue three minutes after the first. Make a note of your resource and staffing assumptions prior to continuing with this 10-Minute Training. **You will arrive from the south on 64th Street after the second company.** Additional resources on the first alarm will arrive later in the incident.

1. What critical factors would you consider when dispatched and during response?

As you were responding Engine 1 provided the following initial radio report:

On-scene of a small one-story commercial with a working fire, Side Alpha, flames from the roof. On a hydrant, stretching an attack line on Side Alpha for fire control, in the offensive strategy, give me a second alarm with Level 2 Staging at 34th Avenue at 60th Street, establishing 34th Command.

34th Command provides the following update report:

No 360 due to size, per the preplan, one story all sides, no basement, two-story commercial exposure on Bravo, one story commercial exposure on Charlie, continuing offensive, Engine 1 is accountability on Side Alpha.

Engine 2 and Medic 2 report Level 1 on a hydrant at 34th Avenue and 60th Street. 34th Command provides the following orders to Engine 2 and Medic 2.

Medic 2, integrate with Engine 1

Engine 2, assist Engine 1 with forcing entry through the overhead door on Side Alpha.

Watch the first 00:20 of the [incident video](#) (LLN NYC, 2023) and examine Figure 9 illustrating conditions on your arrival.

Figure 9. Conditions on Arrival of Chief 1



Note: Adapted from LLN NYC. (2023). *FDNY Battles Blazing 3-Alarm Auto Body Shop Fire / Queens NYC 11.16.23* [video]. <https://bit.ly/4boo73Y>

2. What actions will you take prior to contacting IC #1 (Engine 1) to begin command transfer?

3. State your command transfer communication after IC #1 acknowledges your radio contact (exactly as you would transmit it).

Following your confirmation of the location and assignment of Engine 1, Engine 2, and Medic 2 and request for a conditions, actions, and needs (CAN) report, IC #1 provides the following CAN:

That is correct, Engine 1 and Engine 2 have a 2 ½" attack line stretched on Alpha and are forcing entry through the overhead door. Need a company with an additional attack line for fire control through Side Alpha and an on-deck company.

4. State the communication you would have with IC #1 and dispatch to complete the command transfer (exactly as you would transmit it).

5. What action would you take based on the CAN from Engine 1 (IC #1). State the communications you would have with the operating companies exactly as you would transmit them.

Engine 3 arrives and reports that they are Level 1 on a hydrant on 34th Avenue at 61st Street.

6. State the tactical assignment that you will give Engine 3 exactly as you would transmit it.

Watch the [incident video](#) (LLN NYC, 2023) from 00:25 to 01:00. *Note that there is some tactical activity in the incident video not specified in this 10-Minute Training (e.g., accessing the roof with a portable ladder).*

7. Chief 2 arrives and advises that they are Level 1. State the assignment you will give Chief 2 exactly as you would transmit it.

Engine 4 arrives and reports that they are Level 1 on a hydrant on Northern Boulevard at 64th Street.

8. State the tactical assignment that you will give Engine 4 exactly as you would transmit it.

Reflect on your strategic decision-making and responses to questions 1 through 8 before answering the remaining questions.

9. What was the problem?
10. What was getting in the way of achieving your tactical priorities?
11. Was there anything in this incident that could have hurt or killed you (right now)?
12. Was it reasonable to believe that the building was occupied?
13. Was there searchable space?
14. If you believed it was reasonable that the building was occupied and there was searchable space, what could you do about it?
15. Did you shift to a defensive strategy? Why or why not? If yes, what critical factors influenced your decision and the timing of your shift to defense?

Watch the [incident video](#) (LLN NYC, 2023) from 01:00 to 04:31. Before answering the remaining question.

16. In implementing a defensive strategy, where would you establish cutoff points and what tactics would you implement to protect exposures and effect fire control while ensuring that personnel and apparatus are in a safe operating position?
17. If you were the IC at this incident, what factors would you address in the hot wash (tailboard discussion with the first arriving companies) or in the after-action review? *Remember that the video only provides one incomplete view of incident operations.*

Additional Learning: Consider how a roof report (from Bravo 1 or Charlie 1 Exposures or from an aerial device) would inform your decision-making as IC #2. What information would be most useful from a roof report? Discuss this with the crews you work with.

Read Positioning Aerial Apparatus for Defensive Operations (Daley, 2012). Give some thought to placement of aerial apparatus and the related impact of engine company apparatus on aerial ladder placement. Watch the incident video from 09:30 to 12:30. The FDNY used four tower ladders and multiple handlines to achieve fire control in this incident. What tactical options could have been used by agencies that have fewer aerial resources available?

As you are out in your response area (including where you are second, third, or fourth due) be observant and identify commercial occupancies that could present similar challenges as were encountered during this incident.

References

- Daley, M. (2012). Positioning Aerial Apparatus for Defensive Operations. Retrieved May 19, 2024, from <https://bit.ly/44NxTKl>.
- Google. (2022a). [Street view 62-15 34th Ave, Woodside, NY 11377]. Retrieved May 19, 2024, from <https://bit.ly/44PV8Dv>.
- Google. (2022b). [Street view 62-15 34th Ave, Woodside, NY 11377]. Retrieved May 19, 2024, from <https://bit.ly/3yiSFVO>.
- Google. (2022c). [Street view 62-15 34th Ave, Woodside, NY 11377]. Retrieved May 19, 2024, from <https://bit.ly/4bKvMti>.
- Google. (2022e). [Street view 62-15 34th Ave, Woodside, NY 11377]. Retrieved May 19, 2024, from <https://bit.ly/3wvjTe>.
- Google. (2023a). [Map, 62-15 34th Ave, Woodside, NY 11377]. Retrieved May 19, 2024, from <https://bit.ly/3yonbho>.
- Google. (2023b). [Aerial view 62-15 34th Ave, Woodside, NY 11377]. Retrieved May 19, 2024, from <https://bit.ly/3yoN40t>.
- Google. (2023d). [Street view 62-15 34th Ave, Woodside, NY 11377]. Retrieved May 19, 2024, from <https://bit.ly/3V95MSV>.
- Google. (2024c). [3d aerial view 62-15 34th Ave, Woodside, NY 11377]. Retrieved May 19, 2024, from <https://bit.ly/4bmgt9>.
- LLN NYC. (2023). *FDNY Battles Blazing 3-Alarm Auto Body Shop Fire/Queens NYC 11.16.23* [video]. Retrieved May 19, 2024, from <https://bit.ly/4boo73Y>.

Perry, B. (2023). *FDNY battles three-alarm inferno at auto repair shop in Woodside*. Retrieved May 19, 2024, from <https://bit.ly/44LdZzP>.

Weather Underground (2024). *New York City, NY weather history* [historical weather November 15, 2023]. Retrieved May 19, 2024, from <https://bit.ly/44QHOPh>.