



In-Station Training

TM 24-34 Residential Fire



Author

Chief Ed Hartin

Purpose

Relatively simple incidents that are quickly resolved are often considered “routine”. This is a slippery slope! Every incident provides an opportunity for self-examination and consideration of what went well and what could be improved.

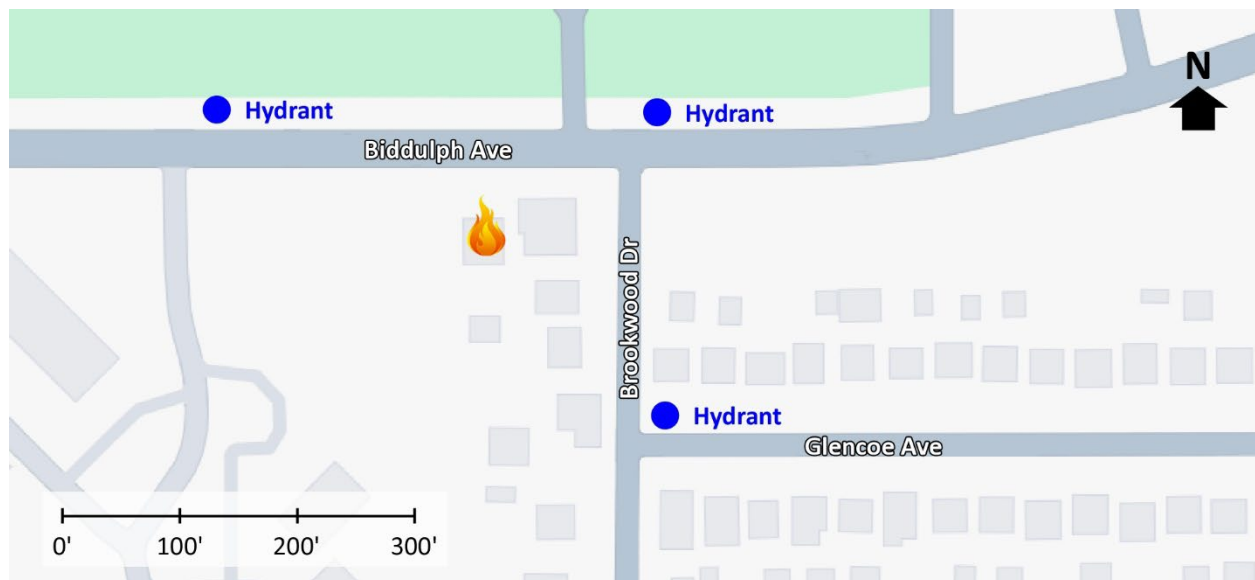
Learning Outcomes

Firefighters and officers perform an effective size-up, select an appropriate strategy, and implement tactics based on the strategic decision-making model.

Conducting the Drill

This incident involved a residential fire at 7701 Biddulph Avenue, Brooklyn, Ohio on July 15, 2024, at 21:00 (SixbyFire, 2024). Review the map and photos (Figures 1-6) to gain an understanding of the area and building involved.

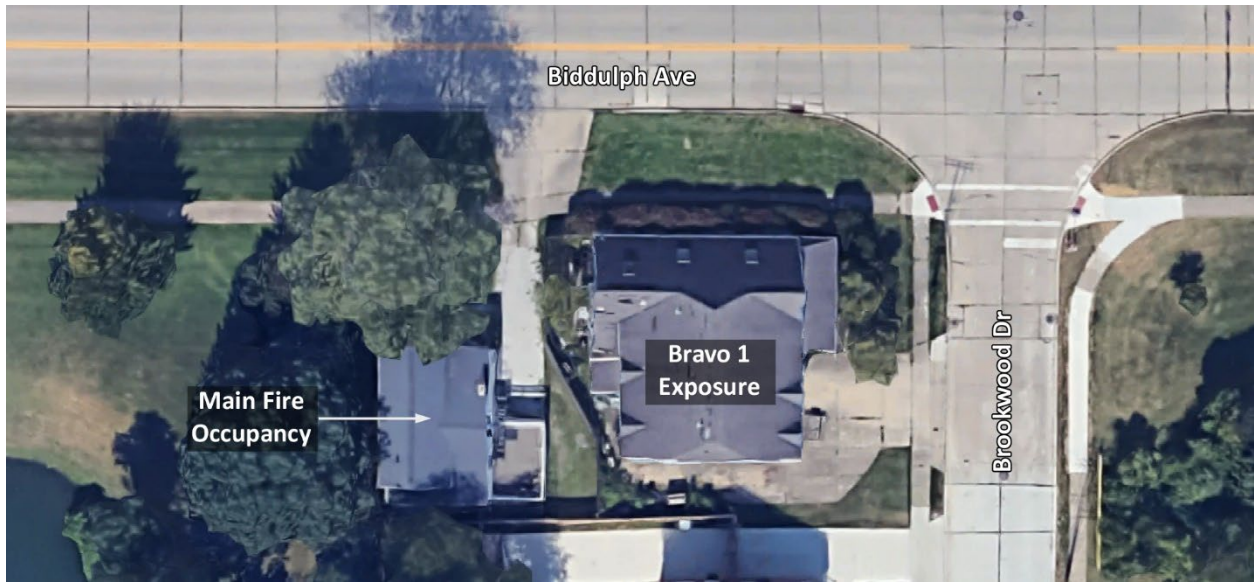
Figure 1. Map of the Incident Area



Note: Adapted from Google. (2024a). [Map, 7701 Biddulph Avenue, Brooklyn, OH].

<https://bit.ly/3YmscSH>.

Figure 2. Aerial View



Note: Adapted from Google. (2024b). [Aerial view 7701 Biddulph Avenue, Brooklyn, OH].
<https://bit.ly/3WFnQEI>.

Hydrants are located on Biddulph Avenue at Brookwood Drive and west of the incident location and an additional hydrant is located at Brookwood Drive and Glencoe Avenue as illustrated in Figure 1.

Figure 3. Alpha/Delta Corner



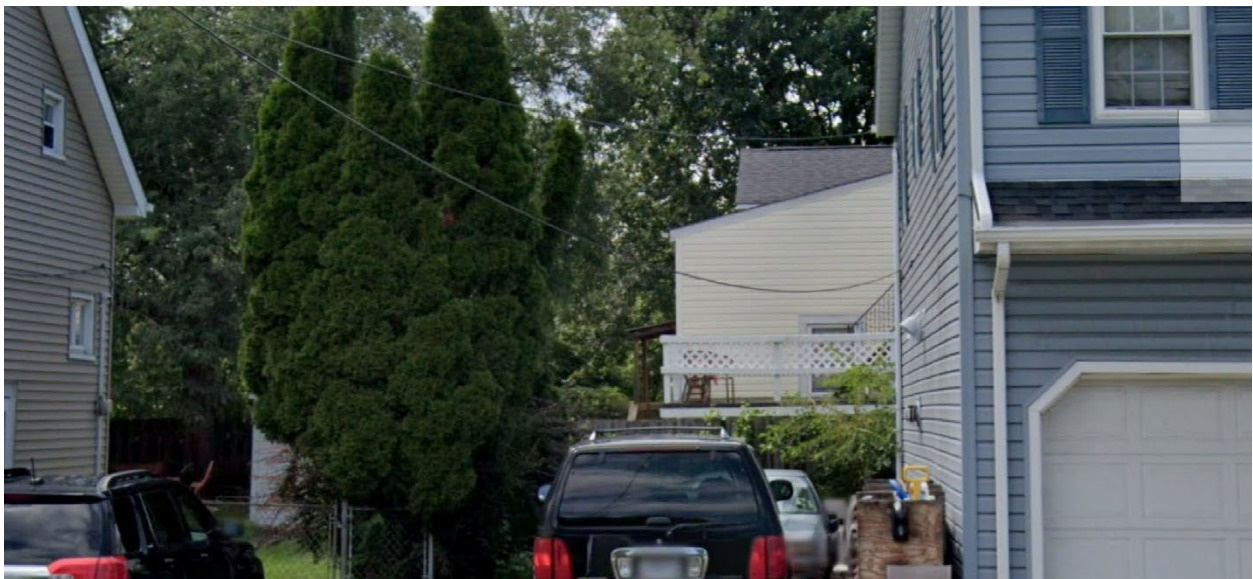
Note: Adapted from Google. (2022a). [Street view 7701 Biddulph Avenue, Brooklyn, OH].
<https://bit.ly/4di0izg>.

Figure 4. Alpha/Bravo Corner



Note: Adapted from Google. (2022b). [Street view 7701 Biddulph Avenue, Brooklyn, OH].
<https://bit.ly/4cZVSJN>.

Figure 5. Side Bravo (Bravo/Charlie Corner) from Brookwood Drive



Note: Adapted from Google. (2022c). [Street view 7701 Biddulph Avenue, Brooklyn, OH].
<https://bit.ly/4d1znnv>.

Figure 6. Side Charlie-(Bravo/Charlie Corner) from Brookwood Drive



Note: Adapted from Google. (2022d). [Street view 7701 Biddulph Avenue, Brooklyn, OH]. <https://bit.ly/4d2aEzC>.

The temperature is currently 83° F with wind from the southwest at 6 mph (Weather Underground, 2024). You have been dispatched to 7701 Biddulph Avenue for a residential fire. You are the company officer or AIC of the first arriving engine and have your company's typical staffing.

1. What critical factors would you consider when dispatched and during response and what conversations would you have with your crew while responding?

You hear a command officer, three other engines, and an advanced life support ambulance with typical staffing for your agency go enroute. You will arrive from the west on Biddulph Avenue. The second engine will arrive from the opposite direction four minutes after you. The command officer will arrive shortly after the second engine. All other units dispatched on the first alarm will arrive after the command officer.

Watch the [incident video](#) (SixbyFire, 2024) from 00:21 to 00:30 and examine Figure 7 illustrating conditions on arrival.

Figure 7. Conditions on Arrival



Note: Adapted from SixbyFire. (2024). Brooklyn (a Cleveland suburb) house fire with mutual aid - pre arrival first due video - 7/15/2024. <https://bit.ly/4fo14c0>.

2. State your initial radio report (IRR) exactly as you would transmit it to dispatch.

3. What specific actions would you take (as the company officer) immediately upon arrival and exiting the apparatus and what task orders you would give your crew?

A civilian occupant reports that he lives in the upstairs unit and that the occupant of the first-floor unit should not be home. No smoke is visible from Sides Bravo, Charlie, or Delta.

4. Would you change the action you are taking or modify the assignments given to your crew? If so, what task orders would you provide?

5. State your update report exactly as you would transmit it to dispatch.

Watch the [incident video](#) (SixbyFire, 2024) from 00:50 to 01:38.

6. Engine 2 arrives and reports that they are Level 1 on a hydrant, west of the incident on Biddulph Avenue. State the tactical assignment you would give them exactly as you would transmit it.

7. Based on the anticipated effectiveness of your tactical operations, state your conditions, actions, and needs (CAN) report that you would provide to the first arriving command officer as part of command transfer to IC #2.

Reflect on your strategic decision-making and responses to questions 1 through 7 before answering the next six questions.

8. What was the problem?

9. What was getting in the way of achieving your tactical priorities?

10. Was there anything in this incident that could have hurt or killed you (right now)?

11. Was it reasonable to believe that the Main Fire Occupancy was occupied?

12. Was there searchable space?

13. If you believed it was reasonable that the building was occupied and there was searchable space, what could you do about it?

14. It appeared that the first arriving company intended to stretch their attack line through the door on Side Alpha (possibly without first making a quick hit through the self-vented window on Side Alpha). Was this consistent with your initial action plan? If you chose the same course of action, why? If not, why not?

15. The first arriving engine attempted to force entry through the door on Side Alpha but appeared to be (at least initially) unsuccessful. What factors may have influenced the ineffectiveness of forcible entry?

Watch the [incident video](#) (SixbyFire, 2024) from 01:34 to the end.

16. Based on your observations, what went well, what could have been improved and if you were the company officer of the first arriving company how would you address the needed improvements?

Additional Learning: Conventional forcible entry using the irons is often performed by a two-person team with one firefighter on the Halligan and the other, the striking firefighter on the flat head axe. However, there are times when a single firefighter may need to perform conventional forcible entry (e.g., the nozzle firefighter is bleeding the line and checking the nozzle). Watch [Forcible Entry on an Inward Opening Wood Door](#) (Firehouse Innovations LI, Inc., 2023) for an overview of options for single firefighter forcible entry with the Halligan when making entry through an inward opening wood door in a wood frame. Note that these techniques are specific to a single firefighter forcing inward opening wood doors and they differ somewhat from the methods that would be used with two firefighters and when forcing metal doors in metal frames (particularly in masonry walls).

As discussed in 10-Minute Training 24-32, Kata is a Japanese word meaning "form". It refers to a detailed choreographed pattern of martial arts movements made to be practiced alone. Work on your "forcible entry kata". Working alone or with a partner walk and talk through forcing an inward opening wood door in a wood frame and practice positioning your body and your tools. Work on your conventional forcible entry. Practice the "forcible entry kata" until it becomes second nature!

References

Firehouse Innovations LI, Inc. (2023). *Forcible entry on an inward opening wood door*. Retrieved July 31, 2024, from <https://bit.ly/4dgvgec>.

Google. (2022a). [Street view 7701 Biddulph Avenue, Brooklyn, OH]. Retrieved July 31, 2024, from <https://bit.ly/4di0jzg>.

Google. (2022b). [Street view 7701 Biddulph Avenue, Brooklyn, OH]. Retrieved July 31, 2024, from <https://bit.ly/4cZVSJN>.

Google. (2022c). [Street view 7701 Biddulph Avenue, Brooklyn, OH]. Retrieved July 31, 2024, from <https://bit.ly/4d1znnv>.

Google. (2022d). [Street view 7701 Biddulph Avenue, Brooklyn, OH]. Retrieved July 31, 2024, from <https://bit.ly/4d2aEzC>.

Google. (2024a). [Map, 7701 Biddulph Avenue, Brooklyn, OH]. Retrieved July 31, 2024, from <https://bit.ly/3YmscSH>.

Google. (2024b). [Aerial view 7701 Biddulph Avenue, Brooklyn, OH]. Retrieved July 31, 2024, from <https://bit.ly/3WFnQEI>.

SixbyFire. (2024). *Brooklyn (a Cleveland suburb) house fire with mutual aid - pre arrival first due video - 7/15/2024*. Retrieved July 31, 2024, from <https://bit.ly/4fo14c0>.

Weather Underground (2024). *Cleveland, OH weather history* [historical weather July 15, 2024]. Retrieved July 31, 2024, from <https://bit.ly/4fswmyw>.