



# In-Station Training

## TM 24-34a Commercial Fire



### Author

Chief Ed Hartin

### Purpose

“To understand the problems of buildings attacked by fire, consider both gravity and fire and what they do to buildings” (Brannigan, 1982, p. 1). Francis Brannigan, frequently emphasized the importance of understanding building construction and the impact of fire attacking the building’s “gravity resistance system” and the potential for structural collapse.

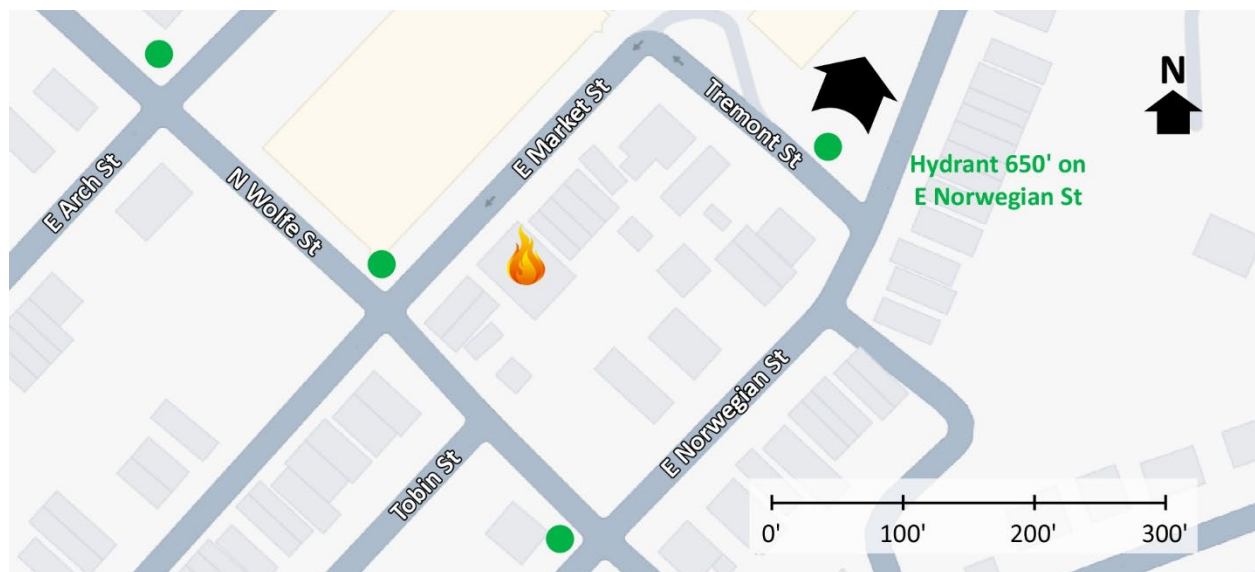
### Learning Outcomes

Command officers perform effective ongoing size-up; select an appropriate strategy, and implement tactics based on the strategic decision-making model.

### Conducting the Drill

This incident involved a commercial fire at Wire Tele-View Corporation, 603 East Market Street in Pottsville, Pennsylvania on May 23, 2024, at 18:50 (Skook News, 2024; The Republican-Herald, 2024; Ludwig, 2024; & Kress, 2024). Review the map and photos (Figures 1-7) to gain an understanding of the area and building involved.

Figure 1. Map of the Incident Area



Note: Adapted from Google. (2024a). [Map, 603 East Market Street, Pottsville, PA].

<https://bit.ly/4f6YvLg>.

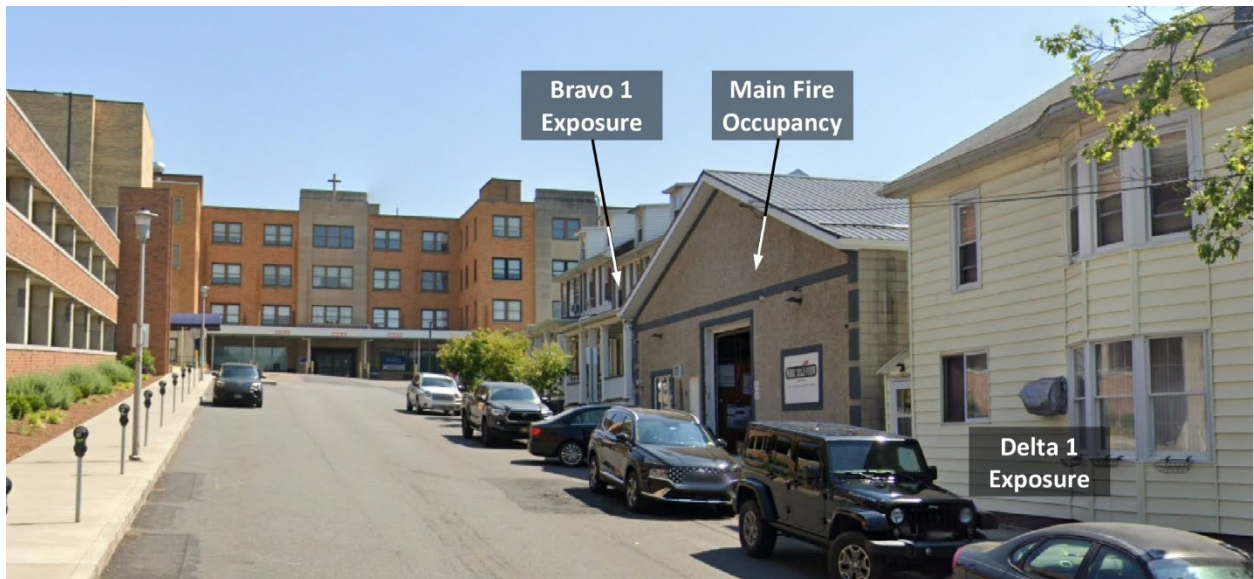
The closest hydrant is at the intersection of North Wolfe and East Market Streets. Additional hydrants are on North Wolfe and Tremont Streets as illustrated in Figure 1.

Figure 2. Aerial View



Note: Adapted from Google. (2024b). [Aerial view 603 East Market Street, Pottsville, PA]. <https://bit.ly/3W9UInF>.

Figure 3. Alpha/Delta Corner



Note: Adapted from Google. (2023a). [Street view 603 East Market Street, Pottsville, PA]. <https://bit.ly/3Wsxv1r>.

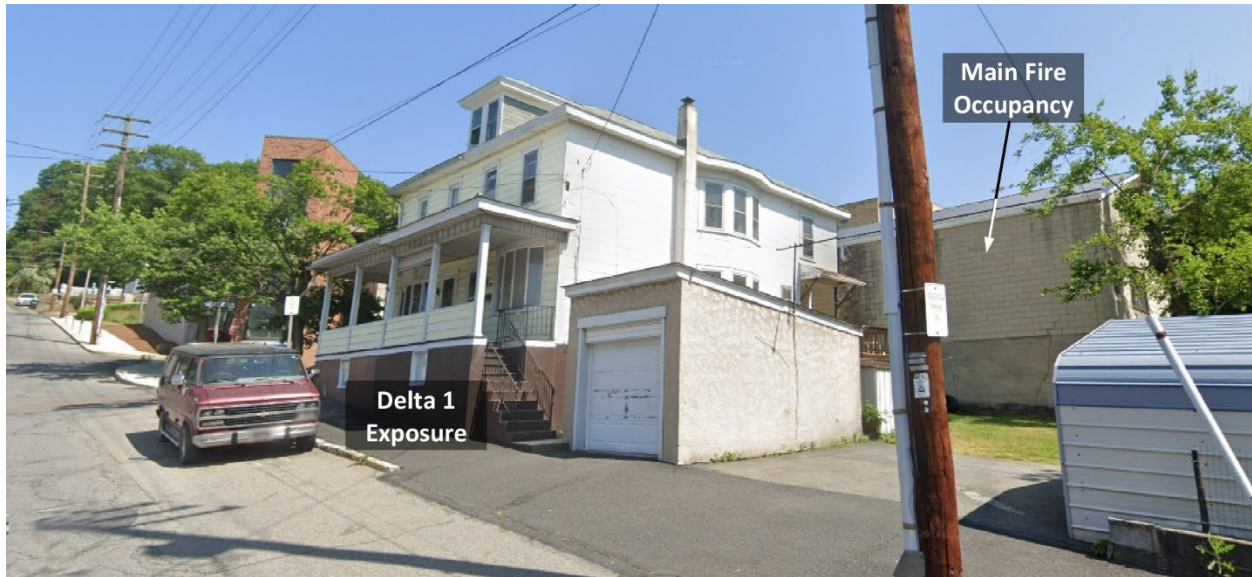


Figure 4. Delta 1 Exposure



Note: Adapted from Google. (2023b). [Street view 603 East Market Street, Pottsville, PA]. <https://bit.ly/4d0bXyQ>.

Figure 5. Side Delta



Note: Adapted from Google. (2023c). [Street view 603 East Market Street, Pottsville, PA]. <https://bit.ly/3zKHvKg>.



Figure 6. Side Charlie



Note: Adapted from Google. (2023d). [Street view 603 East Market Street, Pottsville, PA].  
<https://bit.ly/4deQgeG>.

Figure 7. Alpha/Bravo Corner 3D Aerial View



Note: Adapted from Google. (2024c). [3d aerial view 603 East Market Street, Pottsville, PA].  
<https://bit.ly/4cSV3ST>.

You have been dispatched to a report of an explosion house fire at 468 Market Street (Broadcastify, 2024a). You are responding to this incident as the first arriving command officer. Temperature is 76° F with wind from the west southwest at 7 mph (Weather Underground, 2024). While responding you hear four engines, an advanced life support (ALS) ambulance, and a second command officer enroute. The engines have staffing typical of your agency.

The first engine will arrive from the southeast on North Wolfe Street. The second engine and ALS ambulance will arrive from the same direction three minutes after the first. Make a note of your resource and staffing assumptions prior to continuing with this 10-Minute Training. **You will arrive from the southeast on North Wolfe Street after the second company.** Additional resources on the first alarm will arrive later in the incident.

1. What critical factors would you consider when dispatched and during response?

While responding, dispatch provides an update reporting multiple calls for a house fire with explosion at 468 East Market Street. A short time later, dispatch upgrades the response to a commercial fire in the 400 block of East Market Street.

As you were responding Engine 1 provided the following initial radio report:

*Corrected address 603 East Market Street. On-scene of a small one-story commercial with a working fire, stretching an attack line on Side Alpha for fire control, on a hydrant, offensive strategy, give me two additional engines, establishing Market Command.*

Market Command provides the following update report:

*360 complete, one story all sides, walk out basement on Side Charlie, not involved, Bravo 1 is a two-story row house, Delta 1 is a two-story apartment, partial roof collapse on Side Charlie, shifting to a defensive strategy, Engine 1 is accountability on Side Alpha.*

Engine 2 and Medic 2 report Level 1 on a hydrant at North Wolfe and East Norwegian Streets. Market Command provides the following orders to Engine 2 and Medic 2.

*Engine 2, park out of the way and stretch a second attack line on Side Alpha for fire control.*

*Medic 2, park out of the way and stretch a third attack line on Side Alpha for fire control.*

Examine Figures 8 and 9 illustrating conditions on Side Charlie as you approach and on Side Alpha.



Figure 8. Conditions on Side Charlie as Chief 1 Arrives (viewed from North Wolfe & East Norwegian)



Note: Adapted from The Republican-Herald. (2024). *Fire engulfs the Wire Tele-View building in Pottsville* [video]. <https://bit.ly/3SKVkiV>

Figure 9. Conditions on Side Alpha upon Arrival of Chief 1



Note: Adapted from The Republican-Herald. (2024). *Fire engulfs the Wire Tele-View building in Pottsville* [video]. <https://bit.ly/3SKVkiV>

2. What actions will you take prior to contacting IC #1 (Engine 1) to begin command transfer?
3. State your command transfer communication after IC #1 acknowledges your radio contact (exactly as you would transmit it).

Following your confirmation of the location and assignment of Engine 1, Engine 2, and Medic 2 and request for a conditions, actions, and needs (CAN) report, IC #1 provides the following CAN:

*That is correct, Engine 1, Engine 2 and Medic 2 are operating attack lines for fire control on Side Alpha. Need a company to establish a second water supply and companies to protect Bravo 1 and Delta 1.*

4. State the communication you would have with IC #1 and dispatch to complete the command transfer (exactly as you would transmit it).
5. What action would you take based on the CAN from Engine 1 (IC #1). State the communications you would have with the operating companies exactly as you would transmit them.

Engine 3 arrives and reports that they are Level 1 on a hydrant at North Wolfe and East Norwegian.

6. State the tactical assignment that you will give Engine 3 exactly as you would transmit it.
7. Chief 2 arrives and advises that they are Level 1. State the assignment you will give Chief 2 exactly as you would transmit it.

Engine 4 arrives and reports that they are Level 1 on a hydrant North Wolfe and East Arch.

8. State the tactical assignment that you will give Engine 4 exactly as you would transmit it.

Reflect on your strategic decision-making and responses to questions 1 through 8 before answering the remaining questions.

9. What was the problem?

10. What was getting in the way of achieving your tactical priorities?

11. Was there anything in this incident that could have hurt or killed you (right now)?

12. Was it reasonable to believe that the building was occupied?

13. Was there searchable space?

14. If you believed it was reasonable that the building was occupied and there was searchable space, what could you do about it?

Watch the [incident video](#) (The Republican-Herald, 2024) from 00:11 to 00:26 before answering the remaining questions.

15. This incident video segment begins with the same conditions as presented on your arrival. Did you previously identify members operating in the collapse zone as an immediate safety issue? If so, what action did you take to address this problem? If not, what action could you have taken to expedite movement of members out of the collapse zone?



Watch the [incident video](#) (The Republican-Herald, 2024.) from 00:26 to 00:40 before answering the remaining question.

16. What indicators of potential collapse did you observe in the video segments of this incident?

**Additional Learning:** Read Collapsing Masonry Wall Near Miss (Naum, 2008). Focus on the segment of this post referencing Deputy Chief Vincent Dunn, FDNY (ret) discussing types of masonry wall collapse. What type of wall collapse occurred in the incident addressed in this 10-Minute Training?

Get out in your response area, select a building and conduct a tactical walk around with your companies and discuss apparatus positioning (offensive and defensive), assessment of collapse potential, and performing a strategic shift (as the first arriving company completing a 360 and after transfer of command to IC #2).

## References

Brannigan, F. (1982). *Building construction for the fire service* (2<sup>nd</sup> ed). Quincy, MA.

Broadcastify. (2024a). *Schuylkill County Fire, and EMS, Pottsville Fire 05/23/2024 06:23 PM <--> 06:53 PM EDT* [audio]. Retrieved August 17, 2024, from <https://bit.ly/4dCbIHS>.

Broadcastify. (2024a). *Schuylkill County Fire, and EMS, Pottsville Fire 05/23/2024 06:52 PM <--> 07:22 PM EDT* [audio]. Retrieved August 17, 2024, from <https://bit.ly/3AuEVsi>.

Google. (2023a). [Street view 603 East Market Street, Pottsville, PA]. Retrieved August 17, 2024, from <https://bit.ly/3Wsxv1r>.

Google. (2023b). [Street view 603 East Market Street, Pottsville, PA]. Retrieved August 17, 2024, from <https://bit.ly/4d0bXyQ>.

Google. (2023c). [Street view 603 East Market Street, Pottsville, PA]. Retrieved August 17, 2024, from <https://bit.ly/3zKHvKq>.

Google. (2023d). [Street view 603 East Market Street, Pottsville, PA]. Retrieved August 17, 2024, from <https://bit.ly/4deQgeG>.

Google. (2024a). [Map, 603 East Market Street, Pottsville, PA]. Retrieved August 17, 2024, from <https://bit.ly/4f6YvLg>.

Google. (2024b). [Aerial view 603 East Market Street, Pottsville, PA]. Retrieved August 17, 2024, from <https://bit.ly/3W9UInF>.

- Google. (2024c). [3d aerial view 603 East Market Street, Pottsville, PA]. Retrieved August 17, 2024, from <https://bit.ly/4cSV3ST>.
- Kress, E. (2024). *Fire at commercial building in Schuylkill County*. Retrieved August 17, 2024, from <https://bit.ly/46HSyk4>.
- Ludwig, G. (2024). *Fire and building collapse during operations in Pottsville. PA*. Retrieved August 17, 2024, from <https://bit.ly/3Agxfdo>.
- Naum, C. (2008). Collapsing masonry wall near miss. Retrieved August 17, 2024, from <https://bit.ly/3yTHuDT>.
- Skook News. (2024). *Firefighters at scene of working fire in Pottsville*. Retrieved August 17, 2024, from <https://bit.ly/3LYBbIF>.
- The Republican-Herald. (2024). *Fire engulfs the Wire Tele-View building in Pottsville* [video]. Retrieved August 17, 2024, from <https://bit.ly/3SKVkiV>.
- Weather Underground (2024). *Allentown, PA weather history* [historical weather May 23, 2024]. Retrieved August 17, 2024, from <https://bit.ly/3YKTUsj>.