



In-Station Training

TM 24-50a Auto Repair Shop Fire



Author

Chief Ed Hartin

Purpose

The first arriving command officer often arrives after the first several companies and transfers command from IC #1 (the first arriving company officer). However, in other cases, the command officer arrives first, and incident operations begin with the IC in a strategic command position.

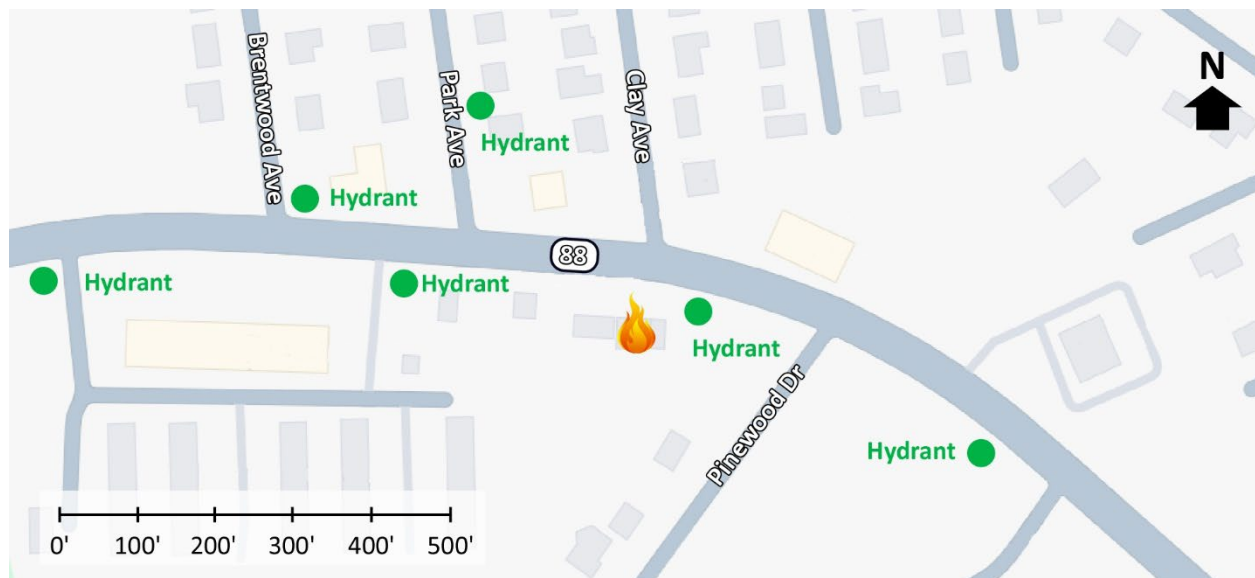
Learning Outcomes

Command officers perform effective ongoing size-up; select an appropriate strategy, and implement tactics based on the strategic decision-making model.

Conducting the Drill

This incident involved a commercial fire at My Family Auto at 1481 NJ-88 in Brick Township, New Jersey on Monday, November 4, 2024, at 20:00 (Jersey Shore Fire Response, 2024; Nee, 2024; & Wall, 2024). Review the map and photos (Figures 1-6) to gain an understanding of the area and building involved.

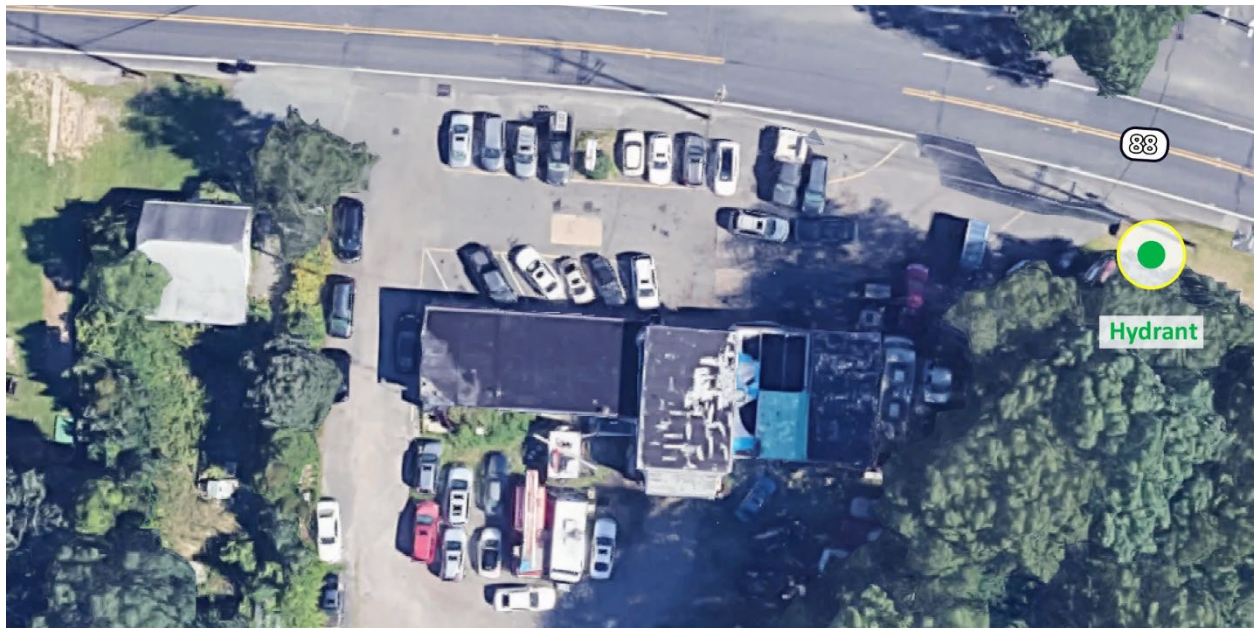
Figure 1. Map of the Incident Area



Note: Adapted from Google. (2024a). [Map, 1481 NJ-88 in Brick Township, NJ]. <https://bit.ly/4fcKfjL>.

The closest hydrant is on the Alpha/Bravo Corner of the Main Fire Occupancy and there are additional hydrants in the incident area as illustrated in Figure 1.

Figure 2. Aerial View



Note: Adapted from Google. (2024b). [Aerial view 1481 NJ-88 in Brick Township, NJ].
<https://bit.ly/3CoUVgp>.

Figure 3. Alpha/Bravo Corner



Note: Adapted from Google. (2022a). [Street view 1481 NJ-88 in Brick Township, NJ].
<https://bit.ly/4f94fDM>,

Figure 4. Side Alpha



Note: Adapted from Google. (2022b). [Street view NJ-88 in Brick Township, NJ]. <https://bit.ly/4egPPAj>.

Figure 5. Alpha/Delta Corner



Note: Adapted from Google. (2022c). [Street view NJ-88 in Brick Township, NJ]. <https://bit.ly/4fvRNOF>.

Figure 6. Side Charlie



Note: Adapted from Google. (2024c). [Street view NJ-88 in Brick Township, NJ]. <https://bit.ly/4fvRNOF>.

You have been dispatched to a reported commercial fire at 1481 Route 88 on a Monday in November at 20:00. You are responding to this incident as the first arriving command officer. The temperature is 52° F with no appreciable wind from the north (Weather Underground, 2024). While responding you hear four engines, three water tenders, an advanced life support (ALS) ambulance, and a second command officer go enroute. The engines have staffing typical of your agency.

You will arrive from the east on Route 88 prior to the arrival of any other first alarm resources. The first engine will arrive from the east on Route 88 shortly after you. The second engine and ALS ambulance will arrive from the opposite direction approximately one minute after the first engine. Make a note of your resource and staffing assumptions prior to continuing with this 10-Minute Training. Additional resources on the first alarm will arrive later in the incident.

1. What critical factors would you consider when dispatched and during response?

While responding, dispatch provides an update reporting a fire in the garage at My Family Auto with callers reporting smoke from the building and flames visible from the roof.

Watch the [incident video](#) (Jersey Shore Fire Response, 2024) from 01:27 to 01:40 and examine Figure 7 illustrating conditions as you arrive.

Figure 7. Conditions on Arrival



Note: Adapted from Jersey Shore Fire Response. (2024). *Early arrival heavy fire auto repair shop two alarm commercial fire Brick, New Jersey 11/4/24* [video]. <https://bit.ly/3CaANP6>.

2. State your initial radio report (IRR) exactly as you would transmit it to dispatch.

3. What specific actions would you take (as the first arriving command officer) immediately upon arrival?

4. Engine 1 arrives and advises that they are on a hydrant (you observe them stopped just short of the Alpha/Bravo corner of the main fire occupancy. State the tactical assignment you would give them exactly as you would transmit it.

Watch the [incident video](#) (Jersey Shore Fire Response, 2024) from 03:48 to 04:30 If you choose to perform 360-degree reconnaissance or assign this task to Engine 1, you determine that the building is one story on all sides, there is no basement, and conditions on Sides Bavo, Delta, and Charlie are consistent with those observed from Side Alpha with flames also showing from an overhead door on

Side Charlie towards the Alpha/Bravo corner of the building and smoke is pushing at moderate velocity from the top of an overhead door in the center of the building.

5. State your update report exactly as you would transmit it to dispatch.

6. Engine 2 arrives and reports that they are Level 1 on a hydrant, Route 88 at Park Avenue. State the tactical assignment you would give them exactly as you would transmit it.

Engine 3 arrives and reports that they are Level 1 on Route 88 at Brentwood Avenue.

7. State the tactical assignment that you will give Engine 3 exactly as you would transmit it.

8. Chief 2 arrives and advises that they are Level 1. State the assignment you will give Chief 2 exactly as you would transmit it.

Engine 4 arrives and reports that they are Level 1 on Route 88 at Park Avenue.

9. State the tactical assignment that you will give Engine 4 exactly as you would transmit it.

Reflect on your strategic decision-making and responses to questions 1 through 9 before answering the remaining questions.

10. What was the problem?

11. What was getting in the way of achieving your tactical priorities?

12. Was there anything in this incident that could have hurt or killed you (right now)?

13. Was it reasonable to believe that the building was occupied?

14. Was there searchable space?

15. If you believed it was reasonable that the building was occupied and there was searchable space, what could you do about it?

Watch the incident video (Jersey Shore Fire Response, 2024) from 04:50 to 09:50 before answering the next several questions.

16. What changes in fire behavior indicators did you observe between 04:50 and 06:50? What was the likely cause of these changes? How would the changing conditions impact your strategy and/or tactics?

17. If you assigned a company to go to the roof and provide a roof report and they subsequently reported that a large section of roof over the main fire area had burned through and collapsed, how would this report have influenced your strategy and/or tactics?

18. The time from arrival of the first engine (air brakes applied) appeared to be 04:59 and water on the fire occurred at 09:14 (with a break of undetermined duration in the incident video at 07:06). What factors may have impacted the time to effective water on the fire?

Additional Learning: The incidents examined in 10-Minute Training 24-50 and 24-50a provide an interesting comparison. In the first incident, the responding agency was a major metropolitan fire department with fully career staffing and in the second the responding agencies had volunteer staffing. While the influencing factors may have been different, in both cases, time to effective water on the fire was not as quick as it might have been.

After completing this 10-Minute Training, watch the following [drone video](#) (Milner, 2024) of a residential fire from 07:20 to 015:20 with the companies you supervise. The agency responding to this fire is a mid-sized career staffed fire department. Discuss initial company operations and identify how to maximize efficiency and minimize time to effective water on the fire.

In this incident, effective water application was also hampered by forcible entry challenges. Watch [Commercial Overhead Sectional Door FE](#) (Miami-Dade Fire Rescue Training Division, 2022) with your crews and discuss how you would approach forcing entry through doors like the ones encountered in the incident examined in this 10-Minute Training.

References

- Google. (2022a). [Street view 1481 NJ-88 in Brick Township, NJ]. Retrieved November 7, 2024, from <https://bit.ly/4f94fDM>,
- Google. (2022b). [Street view NJ-88 in Brick Township, NJ]. Retrieved November 7, 2024, from <https://bit.ly/4egPPAj>.
- Google. (2022c). [Street view NJ-88 in Brick Township, NJ]. Retrieved November 7, 2024, from <https://bit.ly/4fvRNOF>.
- Google. (2024a). [Map, 1481 NJ-88 in Brick Township, NJ]. Retrieved November 7, 2024, from <https://bit.ly/4fcKfjL>.
- Google. (2024b). [Aerial view 1481 NJ-88 in Brick Township, NJ]. Retrieved November 7, 2024, from <https://bit.ly/3CoUVgp>.
- Google. (2024c). [Street view NJ-88 in Brick Township, NJ]. Retrieved November 7, 2024, from <https://bit.ly/4fvRNOF>.
- Jersey Shore Fire Response. (2024). *Early arrival heavy fire auto repair shop two alarm commercial fire Brick, New Jersey 11/4/24* [video]. Retrieved November 6, 2024, from <https://bit.ly/3CaANP6>.
- Miami-Dade Fire Rescue Training Division (2022). *Commercial overhead sectional door FE* [video]. Retrieved November 7, 2024, from <https://bit.ly/4fhsorU>.
- Milner. (2024). Silver Oak 25 Oct 2024. Retrieved November 8, 2024, from <https://bit.ly/3CmOPNN>.
- Nee, D. (2024). *Fire decimates Brick auto repair shop on Route 88, firefighters seen battling blaze from roof*. Retrieved November 6, 2024, from <https://bit.ly/4fgA7q5>.

Wall, K. (2024). *Fire damages auto repair shop on Route 88 in Brick: videos*. Retrieved November 6, 2024, from <https://bit.ly/3NWa2k9>.

Weather Underground (2024). *Ewing NJ weather history* [historical weather November 7, 2024]. Retrieved November 6, 2024, from <https://bit.ly/3UF8rTr>.