



# In-Station Training

## TM 25-18 Residential Fire



### Author

Chief Ed Hartin

### Purpose

Quick water on the fire is essential in an offensive strategy and is compounded when faced with a rapidly developing fire and a significant threat to one or more exposures.

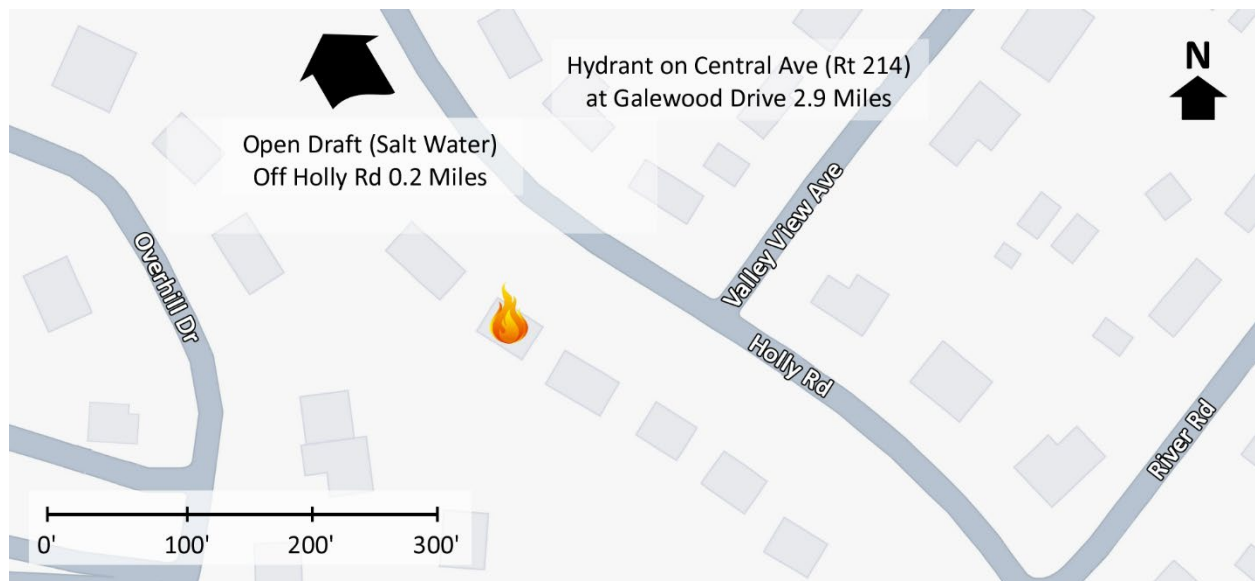
### Learning Outcomes

Firefighters and officers perform an effective size-up, select an appropriate strategy, and implement tactics based on the strategic decision-making model.

### Conducting the Drill

This incident involved a residential fire at 306 Holly Road Edgewater, Maryland on Sunday, March 9, 2025, at 12:30 (tall28guy, 2025 & Broadcastify 2025). Review the map and photos (Figures 1-5) to gain an understanding of the building and area involved.

Figure 1. Map of the Incident Area



Note: Adapted from Google. (2025a). [Map, 306 Holly Road Edgewater, MD]. <https://bit.ly/4bRTOnm>.

Figure 2. Aerial View



Note: Adapted from Google. (2025b). [Aerial view 306 Holly Road Edgewater, MD].

<https://bit.ly/3Ycn1DL>.

There are no hydrants in the immediate area. The closest water tender fill point is an open draft (salt water) site 0.2 miles to the northwest off Holly Drive as illustrated in Figures 1 and 3. A second water tender fill point is at a hydrant on Central Avenue at Galewood Drive as illustrated in Figure 1.

Figure 3. Water Tender Fill Point 1-Open Draft



Note: Adapted from Google. (2025c). [Aerial view 306 Holly Road Edgewater, MD].

<https://bit.ly/3RvqzgG>.

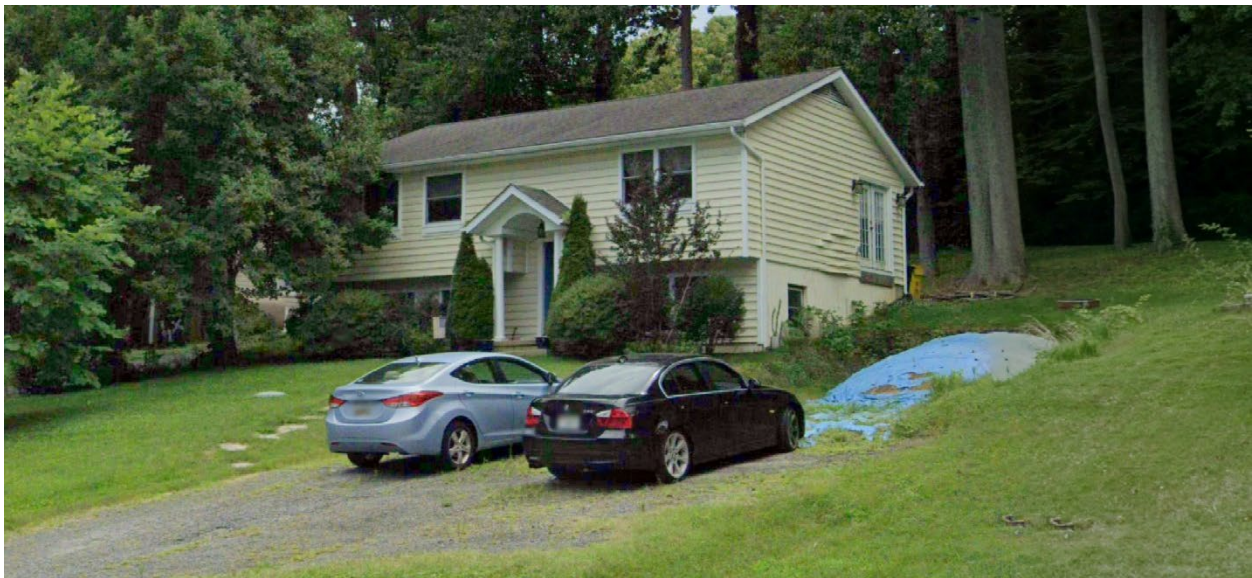


Figure 4. Side Alpha



Note: Adapted from Google. (2022a). [Street view 306 Holly Road Edgewater, MD].  
<https://bit.ly/3Y7cM3C>.

Figure 5. Alpha/Delta Corner



Note: Adapted from Google. (2022b). [Street view 306 Holly Road Edgewater, MD].  
<https://bit.ly/4ccM3Z7>.

The temperature is currently 62° F with wind from the west southwest at 5 mph (Weather Underground, 2025). **You are the company officer of an engine company.** It is Wednesday, January 15<sup>th</sup>, and you have been dispatched along with two other engines, two water tenders, a ladder company, medic unit, and command officer at 12:30 to 2517 West Broadway for a residential fire. The engines and ladder have

four-person staffing<sup>1</sup>. The water tenders are cross staffed with the other two engine companies (three personnel on the engine and one on the water tender).



Time starts now! Answer the first eight questions within the next 10 minutes. Decide and put your answers in the form of communication you would have with your crew, other companies, and the first arriving command officer. Save discussion for after answering the first eight questions.

1. What critical factors would you consider when dispatched and during response? What conversations would you have with your crew during response?

You hear a command officer, two other engines, two water tenders, a ladder company, and an advanced life support ambulance go en route. You will arrive first, approaching from the northwest on Holly Road. The ladder company will arrive from the same direction two minutes after you. The second engine and water tender will arrive from the southeast shortly after the ladder company. The command officer will arrive shortly after the second engine. All other units dispatched on the first alarm will arrive after the command officer.

While responding, dispatch advises that a caller reports fire through the roof. Watch the [incident video](#) (Tall28guy, 2025) from 00:05 to 00:30 and examine Figure 6, illustrating conditions on arrival

---

<sup>1</sup> If your first alarm deployment is different, use your own resource assignment and staffing with the first and second arriving resources typical for your agency (e.g., two engines vs. engine and ladder).

Figure 6. Conditions on Arrival



*Note: Adapted from tall28guy. (2025). Pre arrival house fire 300 Blk Holly Rd Edgewater, Maryland 3-9-25 [video]. <https://bit.ly/3FOCHXH>.*

2. State your initial radio report (IRR) exactly as you would transmit it to dispatch.
  
3. What specific actions would you take (as the company officer) immediately upon arrival and exiting the apparatus and what task orders would you give your crew?

Conditions on Sides Bravo, Charlie, and Delta are consistent with those observed from the Alpha/Delta Corner. Flames from the window on Side Delta are impacting the eaves of the Delta 1 Exposure.

4. Would you change the action you are taking or modify the assignments given to your crew? If so, what task orders would you provide?
  
5. State your update report exactly as you would transmit it to dispatch.

6. Ladder 1 advises that they are Level 1 on Holly Road at Bear Creek Parkway. State the tactical assignment you would give them exactly as you would transmit it.
7. Engine 2 arrives and reports that they are Level 1 on Holly Road at River Road. State the tactical assignment you would give them exactly as you would transmit it.
8. Based on the anticipated effectiveness of your tactical operations, state your conditions, actions, and needs (CAN) report that you would provide to the first arriving command officer as part of command transfer to IC #2.



Reflect on your strategic decision-making and responses to questions one through eight before answering the next six questions. Give some thought to what cues, patterns, or anomalies (differences from conditions that you would anticipate) inform your answers.

9. What was the problem?
10. What was getting in the way of achieving your tactical priorities?
11. Was there anything in this incident that could have hurt or killed you (right now)?
12. Was it reasonable to believe that the Main Fire Occupancy was occupied?
13. Was there searchable space?
14. If you believed it was reasonable that the building was occupied and there was searchable space, what could you do about it?



Watch the [incident video](#) (tall28guy, 2025) from 01:05 to 04:50 and examine Figures 7 and 8 before answering the next several questions.

Figure 7. Conditions on Alpha Immediately Post Entry



*Note:* Adapted from tall28guy. (2025). *Pre arrival house fire 300 Blk Holly Rd Edgewater, Maryland 3-9-25* [video]. <https://bit.ly/3FOCHXH>.

Figure 8. Conditions after Water on the Fire



*Note:* Adapted from tall28guy. (2025). *Pre arrival house fire 300 Blk Holly Rd Edgewater, Maryland 3-9-25* [video]. <https://bit.ly/3FOCHXH>.

15. The first arriving engine stretched a long 1 ¾" attack line and made entry through Side Alpha. Was this consistent with your initial action plan? If so, why did you choose this initial attack position? If not, why did you choose a different alternative?
  
16. In Figure 8, it appears that the roof and wall on Side Charlie (Charlie/Delta corner) have burned away. If you were operating in this area, what concerns would you have regarding structural stability? What action would you take to address these concerns?

Watch the [incident video](#) from 07:57 to 08:14 and examine Figure 9 before answering the next question.

Figure 9. Fire Conditions on Side Bravo



*Note: Adapted from tall28guy. (2025). Pre arrival house fire 300 Blk Holly Rd Edgewater, Maryland 3-9-25 [video]. <https://bit.ly/3FOCHXH>.*

17. Companies operating on the interior encountered extreme hoarding conditions. Given the challenges presented by these conditions, what fire control tactics may have been effective to control the fire in the attic?



18. What water supply tactics did you use and what factors influenced your water supply plan? What would be the advantages and disadvantages of 1) relay from the open draft site, 2) tender shuttle from the open draft site, or 3) tender shuttle from the hydrant?

**Additional Learning:** The companies operating at this incident used a large diameter hose relay from the open draft site off Holly Road to establish a continuous water supply. The distance between the incident location and the road accessing the open draft site was approximately 1100' and the distance between Holly Road and the draft site was approximately 400'. Given the configuration and length of supply hose carried on your apparatus and these conditions, how would you approach establishing open draft and a relay (and how long would this take)? Get out and practice relay operations and drafting!

There are significant challenges to using salt water for structural firefighting operations. The principal negative factor is that salt water is corrosive to pumps and appliances. If salt water is used, all pumps, hose, and appliances must be flushed with a substantial amount of fresh water before returning equipment to service.

## References

- Broadcastify. (2025). *Anne Arundel County Fire and EMS, 03/09/2025, 12:30 PM <--> 01:00 PM EDT* [AA Fire 1 Alpha-November & Fire 2 Bravo-November]. Retrieved April 3, 2025 from <https://bit.ly/4jgw5j9>.
- Google. (2022a). [Street view 306 Holly Road Edgewater, MD]. Retrieved April 3, 2025, from <https://bit.ly/3Y7cM3C>.
- Google. (2022b). [Street view 306 Holly Road Edgewater, MD]. Retrieved April 3, 2025, from <https://bit.ly/4ccM3Z7>.
- Google. (2025a). [Map, 306 Holly Road Edgewater, MD]. Retrieved April 3, 2025, from <https://bit.ly/4bRTOnm>.
- Google. (2025b). [Aerial view 306 Holly Road Edgewater, MD]. Retrieved April 3, 2025, from <https://bit.ly/3Ycn1DL>.
- Google. (2025c). [Aerial view 306 Holly Road Edgewater, MD]. Retrieved April 3, 2025, from <https://bit.ly/3RvqzgG>.
- tall28guy. (2025). Pre arrival house fire 300 Blk Holly Rd Edgewater, Maryland 3-9-25 [video]. Retrieved April 3, 2025, from <https://bit.ly/3FOCHXH>.
- Weather Underground (2025). *Glen Burnie MD weather history* [historical weather March 9, 2025]. Retrieved April 3, 2025, from <https://bit.ly/3FQcTKy>.