



In-Station Training

TM 25-22 Class A Motorhome Fire



Author

Chief Ed Hartin

Purpose

A recreational vehicle (RV) fire is in some respects like a fire in a single family dwelling on wheels. However, RVs have significant differences in design, construction, and layout when compared to a stick built house or even a manufactured home. In addition, motorhomes (self-propelled RVs) have similar characteristics to any other motor vehicle with an engine, fuel system, etc.

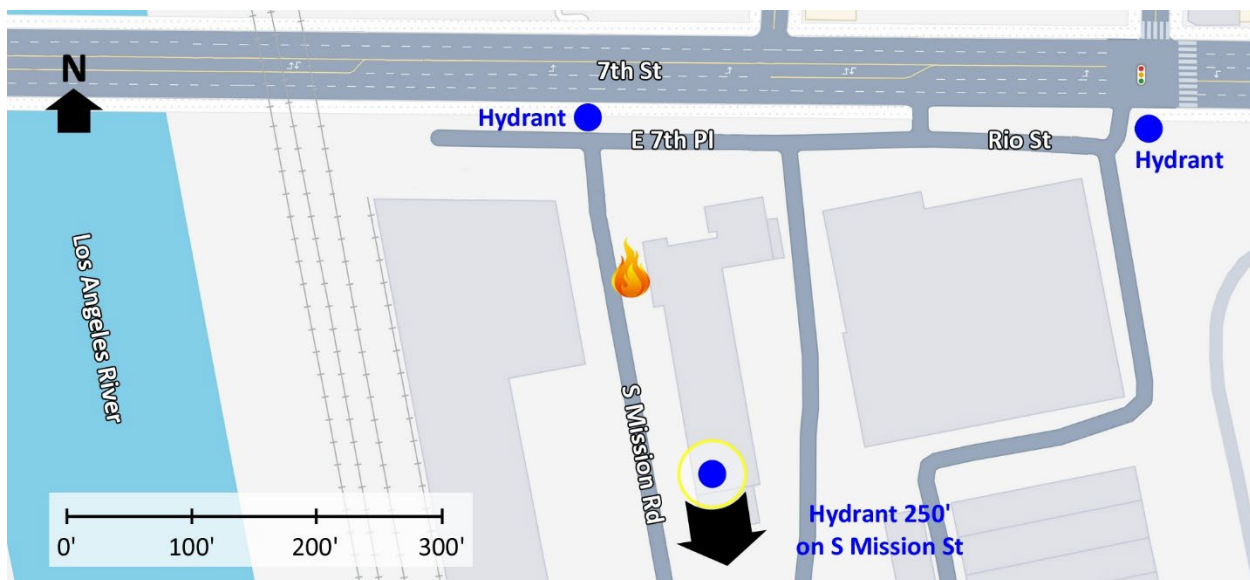
Learning Outcomes

Firefighters and officers perform an effective size-up, select an appropriate strategy, and implement tactics based on the strategic decision-making model.

Conducting the Drill

This incident involved a fire involving multiple Class A motorhomes at 7th Place and Mission Road, Los Angeles, CA, on November 24, 2022 (90210FireBuff, 2023). Review the map and photos (Figures 1-5) to gain an understanding of the area and vehicles involved.

Figure 1. Map of the Incident Area



Note: Adapted from Google. (2025a). [Map, 7th Place and Mission Road, Los Angeles, CA].

<https://bit.ly/3Zpjraq/>

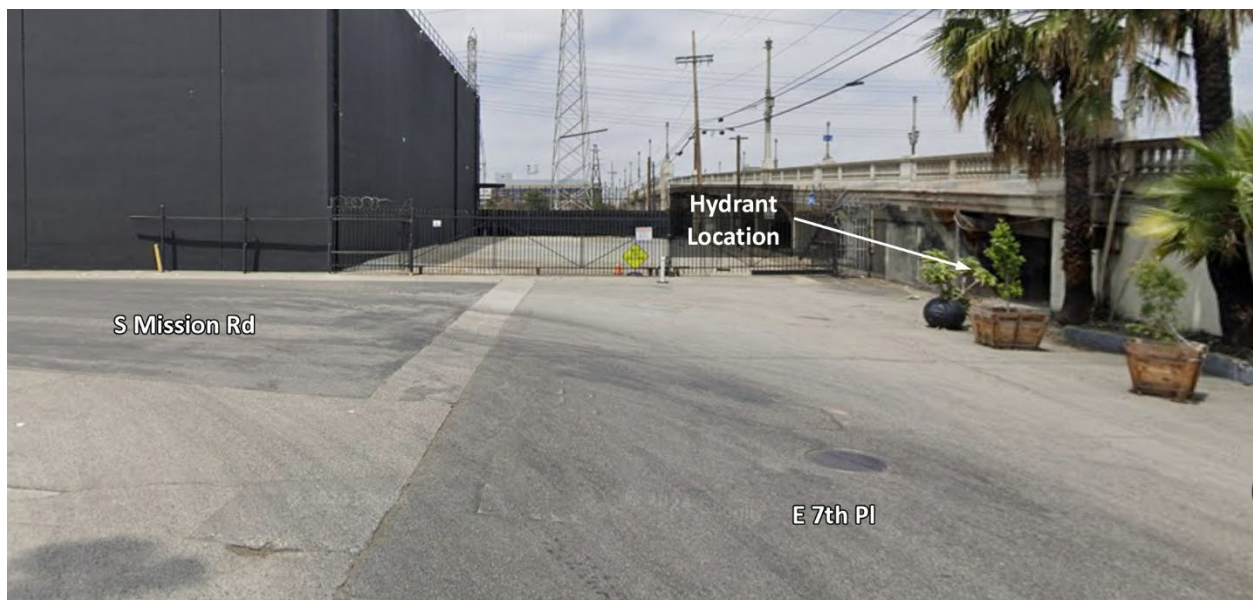
The closest hydrant is on East 7th Place at South Mission Road and additional hydrants are in the area as illustrated in Figures 1 and 2.

Figure 2. Aerial View



Note: Adapted from Google. (2025b). [Aerial view 7th Place and Mission Road, Los Angeles, CA]. <https://bit.ly/43jnJAT>.

Figure 3. 7th Place Approaching South Mission Road



Note: Adapted from Google. (2023b). [Street view 7th Place and Mission Road, Los Angeles, CA]. <https://bit.ly/3EYLpTd>.

Figure 4. South Mission Road (from East 7th Place)



Note: Adapted from Google. (2023c). [Street view 7th Place and Mission Road, Los Angeles, CA].
<https://bit.ly/3SNAVsn>.

Figure 5. South Mission Road (from the South)



Note: Adapted from Google. (2023d). [Street view 7th Place and Mission Road, Los Angeles, CA].
<https://bit.ly/3FfzYGL>.

The temperature is currently 67° F with n appreciable wind from the north (Weather Underground, 2022). **You are the company officer on an engine.** It is Wednesday, November 24th at 10:30. You have been dispatched as a single company to 7th Place and Mission Road for a vehicle fire. Engine and ladder companies have four-person staffing¹.



Time starts now! Answer the first eight questions within the next 10 minutes. Decide and put your answers in the form of communication you would have with your crew, other companies, and the first arriving command officer. Save discussion for after answering the first eight questions.

1. What critical factors would you consider when dispatched and during response? What conversations would you have with your crew during response?

While responding, dispatch advises that multiple callers are reporting a fire involving two motorhomes on South Mission Road, just south of East 7th Place.

2. What action will you take based on this additional information? State the communication you would have with dispatch exactly as you would transmit it.
3. What conversations would you have with your apparatus operator and other members of your crew based on this additional information.

Watch the first 00:30 of the [incident video](#) (90210FireBuff, 2023) and examine Figure 6, illustrating conditions on arrival.

¹ If your first alarm deployment is different, use your own resource assignment and staffing with the first and second arriving resources typical for your agency (e.g., two engines vs. engine and ladder).

Figure 6. Conditions on Arrival



90210FireBuff. (2023) Double massive RV fire-LAFD Engine 17 & Engine 25 (Boyle Heights). Retrieved May 25, 2025, from <https://bit.ly/3FoaVBc>.

4. State your initial radio report (IRR) exactly as you would transmit it to dispatch.

5. What specific actions would you take (as the company officer) immediately upon arrival and exiting the apparatus and what task orders would you give your crew?

Conditions on the passenger side and rear of the motorhomes are consistent with those on the driver's side and front.

6. Would you change the action you are taking or modify the assignments given to your crew? If so, what task orders would you provide?

7. State your update report exactly as you would transmit it to dispatch.

The following questions are based on your having upgraded the resource determination from a single company response to a three and one response, providing two additional engines, ladder company, and command officer.

8. Ladder 1 advises that they are Level 1 at 7th Street and Rio Street. State the tactical assignment you would give them exactly as you would transmit it.

9. Based on the anticipated effectiveness of your tactical operations, state your conditions, actions, and needs (CAN) report that you would provide to the first arriving command officer as part of command transfer to IC #2.



Reflect on your strategic decision-making and responses to questions one through nine before answering the next six questions. Give some thought to what cues, patterns, or anomalies (differences from conditions that you would anticipate) inform your answers.

10. What was the problem?

11. What was getting in the way of achieving your tactical priorities?

12. Was there anything in this incident that could have hurt or killed you (right now)?

13. Was it reasonable to believe that the motor homes were occupied?

14. Was there searchable space?

15. If you believed it was reasonable that the motorhomes were occupied and there was searchable space, what could you do about it?

Watch the [incident video](#) (90210FireBuff, 2023) from 02:15 to 08:00.

16. There seemed to be inadequate pressure and several interruptions in flow through the initial attack line. What might have accounted for the initial challenges encountered by the nozzle firefighter in applying water effectively?

17. Once the apparatus operator established water supply from the hydrant, he placed the apparatus mounted master stream into operation. Was this an effective tactic for fire control? Why or why not?

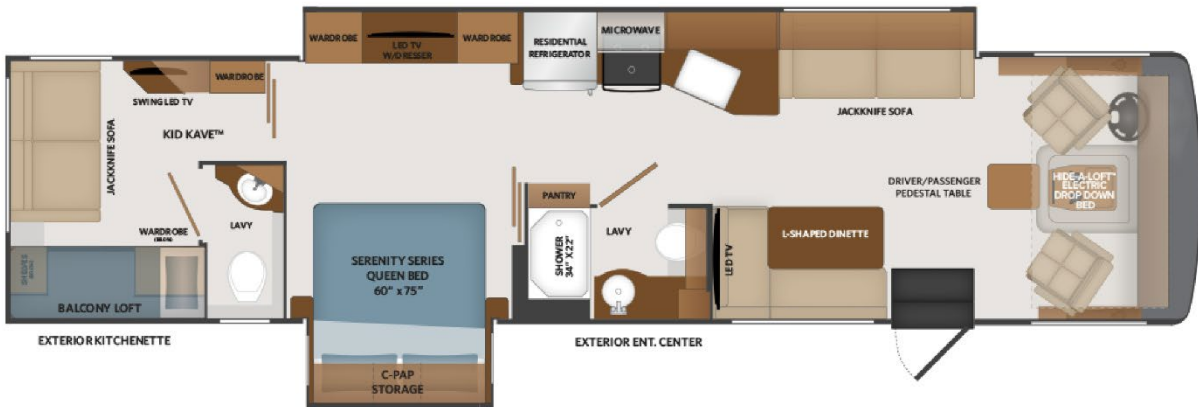
18. At 05:00 in the incident video, the captain of Engine 25 is connecting the two engines (17 & 25) suction to suction, dual pumping off the end of the short supply line that Engine 17 laid from the hydrant on East 7th Place. What are the advantages and disadvantages of this tactic given the circumstances of this incident.

19. What potential hazards do propane tanks like those typically mounted in Class A Motorhomes present under fire conditions? How can you minimize the risks related to the presence of a vehicle propane tank?

Additional Learning: The additional learning in this 10-Minute Training focuses on familiarity with motorhomes and the concept of dual pumping.

Motor Home Familiarization: If you are not familiar with the characteristics of Class A motorhomes examine Figure 7 and watch this [video](#) (Endless RVing, 2023). While it is a bit of a sales pitch the video provides a good look at a front engine model (other designs have the engine in the rear). Unlike houses, interior doors are often “pocket doors,” think about how this might impact access and orientation during fire control or search. Many Class A motorhomes have one or more slide outs to increase floor space while camping. Consider the differences in floor plan when the slides are in versus when they are out.

Figure 7. 2025 Fortis 36Y Bunkhouse Floor Plan



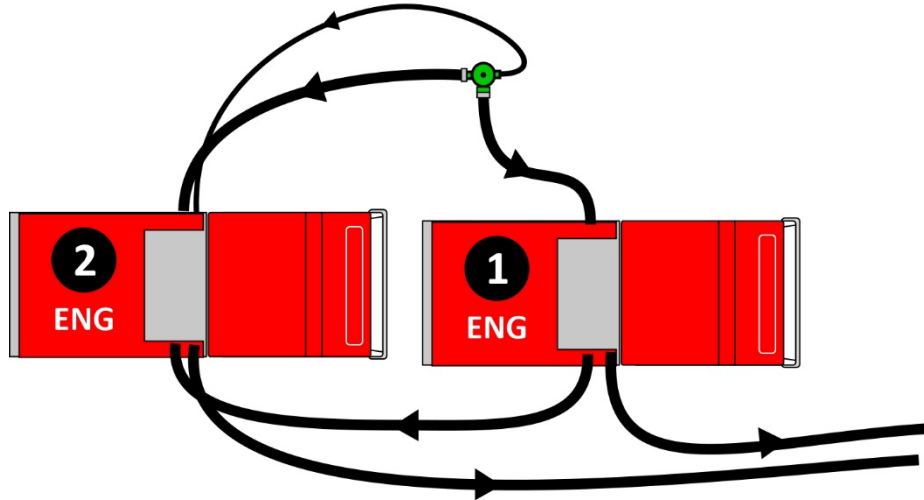
Note: Adapted from Fleetwood. (2025). 2025 Fortis 36Y Bunkhouse. Retrieved from <https://bit.ly/4jloaAC>.

There are three basic classes of motorhomes, Class A, Class B, and Class C as well as a wide range of configurations and floor plans in each class. If you are not familiar with these different classes of motorhomes, watch this [video](#) (Matt's RV Reviews, 2017) for a quick overview.

Dual Pumping: Question 18 asked about dual pumping. If you are not familiar with this water supply tactic, here is a brief overview. Dual pumping usually involves connecting multiple engines to a single hydrant. However, it is also possible to use this tactic with multiple engines pumping off the end of a high flow supply line (as in the LA motorhome incident).

Dual pumping takes advantage of high flow capability by connecting more than one pump to a hydrant in parallel. For example, if an engine is operating from a hydrant and has less than a 20% drop in residual pressure when flowing its rated capacity, 1X the pump's rated capacity is still available at the hydrant. A second pump may connect (suction to suction) to the engine currently operating from the hydrant to provide additional pumping capacity without the need to deploy longer hoselines to another source of supply.

Figure 8. Dual Pumping



Advantages of Dual Pumping: Allows use of two smaller pumps (such as 750 gpm water tenders) on a single high flow hydrant. Maximizes flow capability from high flow hydrants without the need to lay supply lines to more distant hydrants.

Disadvantages of Dual Pumping: Limited to high flow hydrants or high flow supply lines where there is adequate space to position two apparatus.

Application of Dual Pumping: Consider dual pumping for high flow operations (such as commercial or industrial fires), where one or more hydrants have an adequate flow rate to support two pumps.

References

- 90210FireBuff. (2023) *Double massive RV fire-LAFD Engine 17 & Engine 25 (Boyle Heights)* [video]. Retrieved May 25, 2025, from <https://bit.ly/3FoavBc>.
- Endless Rving. (2023). *Amazing new Class A motorhome floor plan with 2 full bedrooms and baths -- made for family travel!* [video]. Retrieved May 25, 2025, from <https://bit.ly/4kFp3oV>.
- Google. (2023b). [Street view 7th Place and Mission Road, Los Angeles, CA]. Retrieved May 25, 2025, from <https://bit.ly/3EYLpTd>.
- Google. (2023c). [Street view 7th Place and Mission Road, Los Angeles, CA]. Retrieved May 25, 2025, from <https://bit.ly/3SNAVsn>.
- Google. (2023d). [Street view 7th Place and Mission Road, Los Angeles, CA]. Retrieved May 25, 2025, from <https://bit.ly/3FfzYGL>.
- Google. (2025a). [Map, 7th Place and Mission Road, Los Angeles, CA]. Retrieved May 25, 2025, from <https://bit.ly/3Zpirqp>.

Google. (2025b). [Aerial view 7th Place and Mission Road, Los Angeles, CA]. Retrieved May 25, 2025, from <https://bit.ly/43jnJAT>.

Matt's RV Reviews. (2017). *Difference between Class A B C motorhomes* [video]. Retrieved May 25, 2025, from <https://bit.ly/43eeJ1i>.

Weather Underground (2025). *Hawthorne, CA weather history* [historical weather November 24, 2022]. Retrieved May 25, 2025, from <https://bit.ly/3HbBytV>.