



# In-Station Training

## TM 25-42 Residential Fire with Exposure



### Author

Chief Ed Hartin

### Purpose

Fires with significant exposure hazards present a challenge, extension from the main fire occupancy to one or more exposures dramatically increases the complexity of an incident.

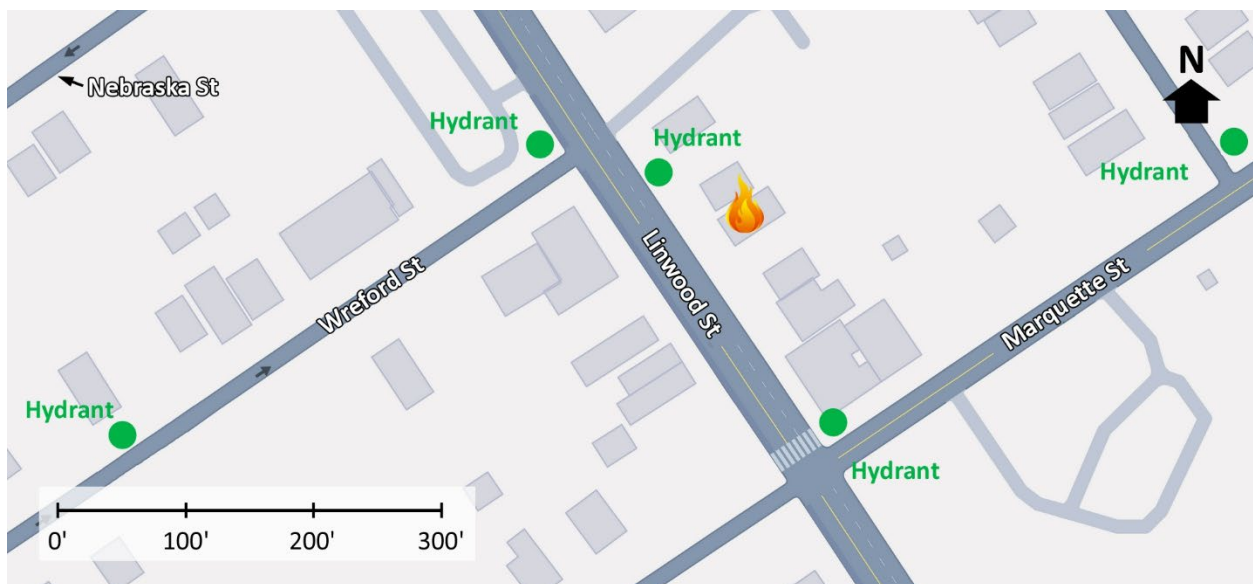
### Learning Outcomes

Firefighters and officers perform an effective size-up, select an appropriate strategy, and implement tactics based on the strategic decision-making model.

### Conducting the Drill

This incident involved a residential fire at 6134 Linwood Street, Detroit, Michigan on Wednesday, October 1, 2025, at 22:52 (JoshFire, 2025 & Broadcastify 2025a & 2025b). Review the map and photos (Figures 1-6) to gain an understanding of the building and area involved.

Figure 1. Map of the Incident Area



*Note:* Adapted from Google. (2025a). [Map, 6134 Linwood Street, Detroit, MI]. Map data ©2025 Google. <https://bit.ly/3KENOoi>.

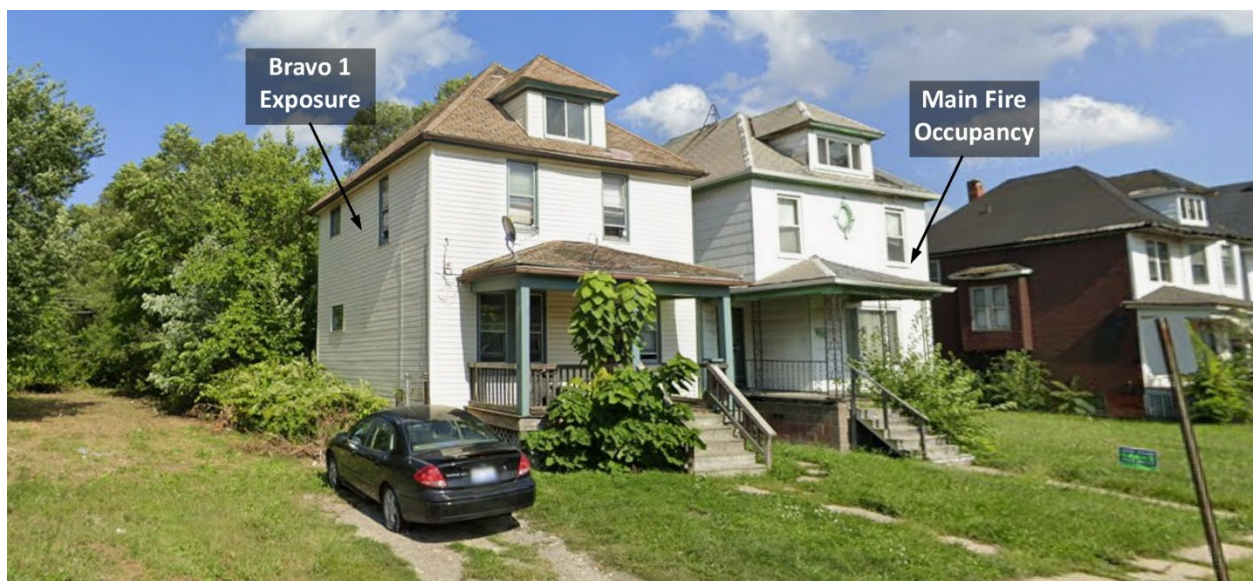
The closest hydrant is to the northwest on Linwood Street between Exposures Bravo 1 and Bravo 2. Additional hydrants are in the area as illustrated in Figure 1.

Figure 2. Aerial View



Note: Adapted from Google. (2025b). [Aerial view 6134 Linwood Street, Detroit, MI]. Imagery © Google, Imagery © Airbus Maxar Technologies, Map Data © 2025. <https://bit.ly/4gU5zfD>.

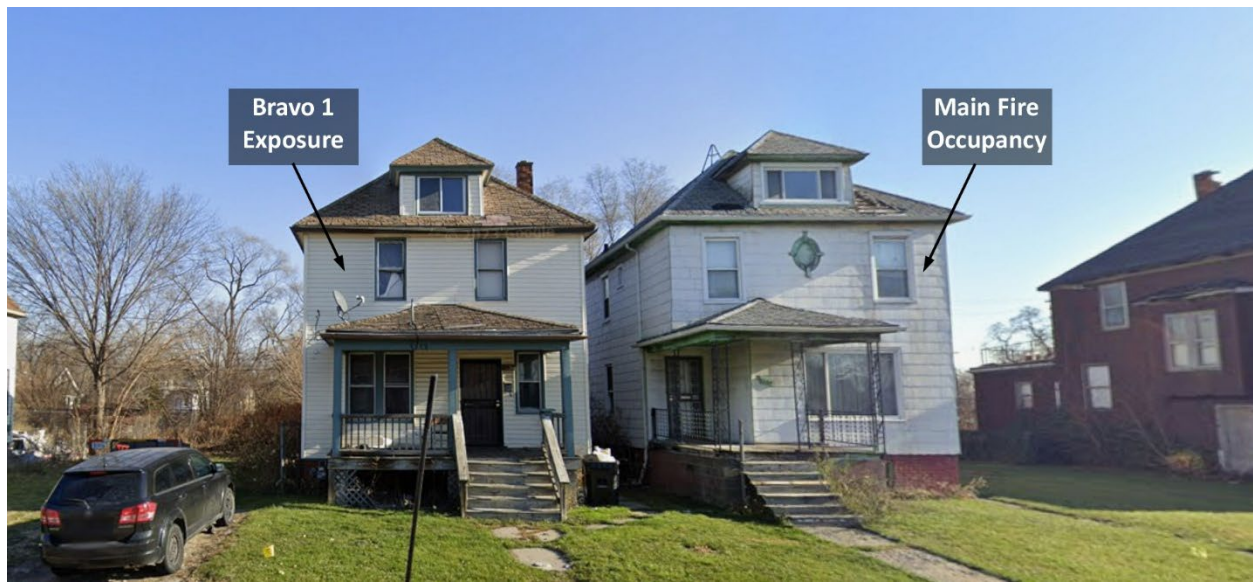
Figure 3. Alpha/Bravo Corner



Note: Adapted from Google. (2018). [Street view 6134 Linwood Street, Detroit, MI]. ©2025 Google <https://bit.ly/4mL3FPz>.

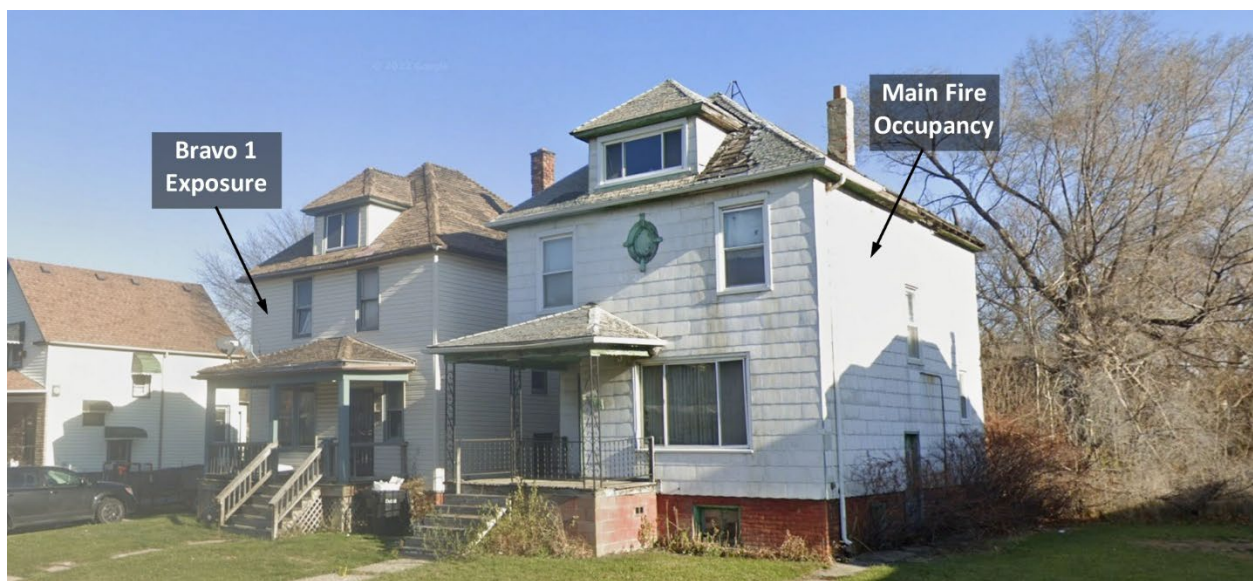


Figure 4. Side Alpha



Note: Adapted from Google. (2022a). [Street view 6134 Linwood Street, Detroit, MI]. ©2025 Google <https://bit.ly/4gS99qi>.

Figure 5. Alpha/Delta Corner



Note: Adapted from Google. (2022b). [Street view 6134 Linwood Street, Detroit, MI]. ©2025 Google <https://bit.ly/4h1ADKu>.

Figure 6. Charlie/Delta Corner



Note: Adapted from Google. (2025c). [3d aerial view 6134 Linwood Street, Detroit, MI]. Map data ©2025 Google <https://bit.ly/435Hg8y>.

The temperature is currently 61° F with wind from the northeast at 8 mph (Weather Underground, 2025). **You are the company officer of an engine company.** It is Wednesday, October 1<sup>st</sup>, and you are dispatched along with **two other engines, a ladder company, medic unit, and command officer** to 6134 Linwood Street at 22:52 for a residential fire. The engines and ladder have four-person staffing<sup>1</sup>.



Time starts now! Answer the first eight questions within the next 10 minutes. Decide and put your answers in the form of communication you would have with your crew, other companies, and the first arriving command officer. Save discussion for after answering the first eight questions.

<sup>1</sup> If your first alarm deployment is different, use your own resource assignment and staffing with the first and second arriving resources typical for your agency (e.g., two engines vs. engine and ladder).



1. What critical factors would you consider when dispatched and during response? What conversations would you have with your crew during response?

You hear a command officer, two other engines, a ladder company, and an advanced life support ambulance go en route. Shortly after going enroute, dispatch provides an update that they are receiving multiple calls for a fire in a vacant house at the reported address.

You will approach the incident location from the northwest on Linwood Street and will arrive first. The first ladder company will arrive from the opposite direction shortly after you. The second engine will arrive from the southeast on Linwood Street three minutes after the ladder company. The command officer will arrive shortly after the second engine. All other units dispatched on the first alarm will arrive after the command officer.

Examine Figure 7 illustrating conditions on arrival and watch the first 00:08 of the [incident video](#) (JoshFire, 2025).

Figure 7. Conditions on Arrival



*Note:* Adapted from JoshFire. (2025). *Detroit Fire box alarm-pre arrival 2 dwellings (Linwood & Marquette St)*. Retrieved October 5, 2025, from <https://bit.ly/48NwRC4>

2. State your initial radio report (IRR) exactly as you would transmit it to dispatch.

3. What specific actions would you take (as the company officer) immediately upon arrival and exiting the apparatus and what task orders would you give your crew?

Shortly after exiting the apparatus, you receive a report that bystanders have evacuated the elderly occupant of the Bravo 1 exposure. Side Delta of the Bravo 1 exposure is pyrolyzing. Fire involvement is evident on Floors 1 and 2 from Side Delta. Fire has not yet extended to Floor 1 on Side Charlie.

4. Would you change the action you are taking or modify the assignments given to your crew? If so, what task orders would you provide?
5. State your follow up report exactly as you would transmit it to dispatch.
6. Ladder 1 arrives and reports that they are Level 1 on Lindwood Street at Wreford Street. State the tactical assignment you would give them exactly as you would transmit it.
7. Engine 2 arrives and reports that they are Level 1 on a hydrant on Linwood Street at Marquette Street. State the tactical assignment you would give them exactly as you would transmit it.
8. Based on anticipated effectiveness of your tactical operations, state your conditions, actions, and needs (CAN) report that you would provide to the first arriving command officer as part of command transfer to IC #2.



Reflect on your strategic decision-making and responses to questions one through eight before answering the next six questions. Think about what cues, patterns, or anomalies (differences from conditions that you would anticipate) inform your answers.

9. What was the problem?

10. What was getting in the way of achieving your tactical priorities?
11. Was there anything in this incident that could have hurt or killed you (right now)?
12. Was it reasonable to believe that the Main Fire Occupancy was occupied?
13. Was there searchable space?
14. If you believed it was reasonable that the building was occupied and there was searchable space, what could you do about it?

Watch the remainder of the [incident video](#) (JoshFire, 2025) before answering the remaining questions.



In this incident, first arriving engine performed a reverse lay from the incident location to the hydrant at the intersection of Linwood and Marquette Streets and the second and third arriving engines used apparatus mounted master streams (from tank water) to knock down the fire in the Main Fire Occupancy before stretching an attack line to the interior.

As previously discussed in [10-Minute Training 25-08](#), some urban fire departments commonly use a reverse lay as the initial water supply tactic based on the characteristics of their water supply system (e.g., hydrant spacing), built environment, and apparatus positioning requirements (e.g., leaving the front of the incident building clear for placement of aerial apparatus).

15. Compare your incident action plan to that used in this incident? Think about strategy in the main fire occupancy and the exposure along with the choice of tactics? What was similar and what was different? What critical factors influenced your decisions?
16. Was the brief use of apparatus mounted master streams effective in knocking down the fire in the Main Fire Occupancy? Under what circumstances would you use your apparatus mounted master stream with tank water?

At 03:18 in the incident video, the IC initiated a strategic shift (indicated by blasts on apparatus air horns). Attack lines were withdrawn from the Main Fire Occupancy and redeployed to protect Exposures Bravo 1 and Delta 1 and for exterior fire control. However, one company had members in the basement and was delayed in exiting the hazard zone (JoshFire, 2025 & Broadcastify 2025a).

17. If your company was working inside the main fire occupancy when IC #2 ordered a strategic shift and conditions resulted in a delay in your exit, how would you communicate this to the IC? State your radio communication exactly as you would transmit it?

**Additional Learning:** In this incident, there was significant potential for extension of fire from the Main Fire Occupancy to the Bravo 1 Exposure. When faced with this problem, it is important to not only address extension to the exterior of the exposure, but also to ensure that fire has not penetrated to structural voids, attic, and interior of the building.

Use Figure 8 and discuss potential avenues of extension from the Main Fire Occupancy to the Bravo 1 Exposure and potential avenues of fire spread within the exposure should extension occur with members of your crew.

Figure 8. Potential for Extension



*Note:* Adapted from Google. (2022c). [Street view 6134 Linwood Street, Detroit, MI]. ©2025 Google <https://bit.ly/3J1LyqN>.



Discuss use of the apparatus mounted master stream with the members of your crew. Watch [PADO Deck Gun Blitz](#) (Austin Fire Department, 2021). Discuss where it may be appropriate to use the apparatus mounted master stream with tank water.



Get out and practice making a quick hit with your apparatus mounted master stream (using tank water). How quickly can you implement this tactical option? Can you maximize the amount of water on target without waste? Practice limiting application to half your tank water and transitioning to supplying an attack line.

## References

- Austin Fire Department. (2021). *PADO deck gun blitz*. Retrieved October 7, 2025, from <https://bit.ly/46FU9bR>.
- Broadcastify. (2025a). Detroit Fire 10/01/2025 10:34 PM <--> 11:04 PM EDT. Retrieved October 9, 2025, from <https://bit.ly/4o9NvAe>.
- Broadcastify. (2025b). Detroit Fire 10/01/2025 11:04 PM <--> 11:34 PM EDT. Retrieved October 9, 2025, from <https://bit.ly/4nC3ml4>.
- Google. (2018). [Street view 6134 Linwood Street, Detroit, MI]. ©2025 Google. Retrieved October 7, 2025, from <https://bit.ly/4mL3FPz>.
- Google. (2022a). [Street view 6134 Linwood Street, Detroit, MI]. ©2025 Google. Retrieved October 7, 2025, from <https://bit.ly/4gS99qi>.
- Google. (2022b). [Street view 6134 Linwood Street, Detroit, MI]. ©2025 Google. Retrieved October 7, 2025, from <https://bit.ly/4h1ADKu>.
- Google. (2022c). [Street view 6134 Linwood Street, Detroit, MI]. ©2025 Google. Retrieved October 7, 2025, from <https://bit.ly/3J1LyqN>.
- Google. (2025a). [Map, 6134 Linwood Street, Detroit, MI]. Map data ©2025 Google. Retrieved October 7, 2025, from <https://bit.ly/3KENOoi>.
- Google. (2025b). [Aerial view 6134 Linwood Street, Detroit, MI]. Imagery © Google, Imagery © Airbus Maxar Technologies, Map Data © 2025. Retrieved October 7, 2025, from <https://bit.ly/4gU5zfD>.
- Google. (2025c). [3d aerial view 6134 Linwood Street, Detroit, MI]. Map data ©2025 Google. Retrieved October 7, 2025, from <https://bit.ly/435Hg8y>.
- Hartin, E. (2025). *10-Minute Training 25-08 Residential Fire*. Retrieved October 7, 2025, from <https://bit.ly/3VT3Ope>.
- JoshFire. (2025). *Detroit Fire box alarm-pre arrival 2 dwellings (Linwood & Marquette St)*. Retrieved October 7, 2025, from <https://bit.ly/48NwRC4>.

Weather Underground (2025). *Detroit, MI weather history* [historical weather October 1, 2025]. Retrieved October 7, 2025, from <https://bit.ly/4pRg9lp>.