



In-Station Training

TM 25-52 Commercial Fire



Author

Chief Ed Hartin

Purpose

Fire location in a strip mall significantly impacts exposure hazards and resource requirements. When the fire is in a two-story strip mall these challenges are multiplied.

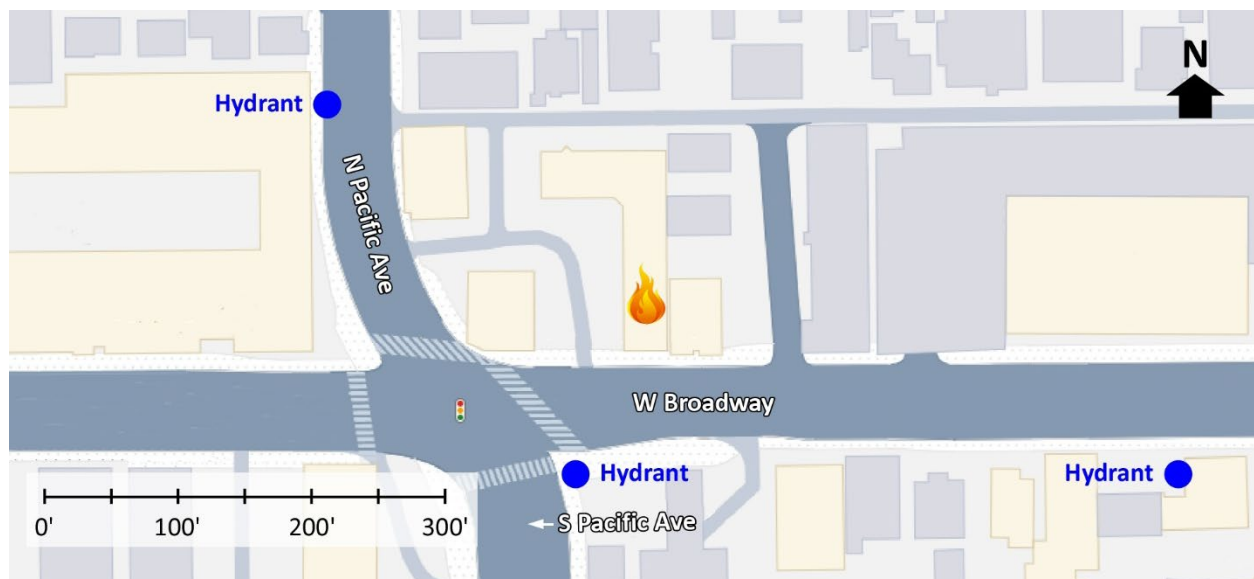
Learning Outcomes

Firefighters and officers perform an effective size-up, select an appropriate strategy, and implement tactics based on the strategic decision-making model.

Conducting the Drill

This incident involved a strip mall fire at Tacos Cancun, 459 W Broadway, Glendale, California, on Wednesday, December 3, 2025, at 23:47 (The411, 2025, Broadcastify, 2025). Review the map and photos (Figures 1-9) to gain an understanding of the building and area involved.

Figure 1. Map of the Incident Area



Note: Adapted from Google. (2025a). [Map, 459 W Broadway, Glendale, CA]. Map data ©2025 Google. <https://bit.ly/4oCnj1c>.

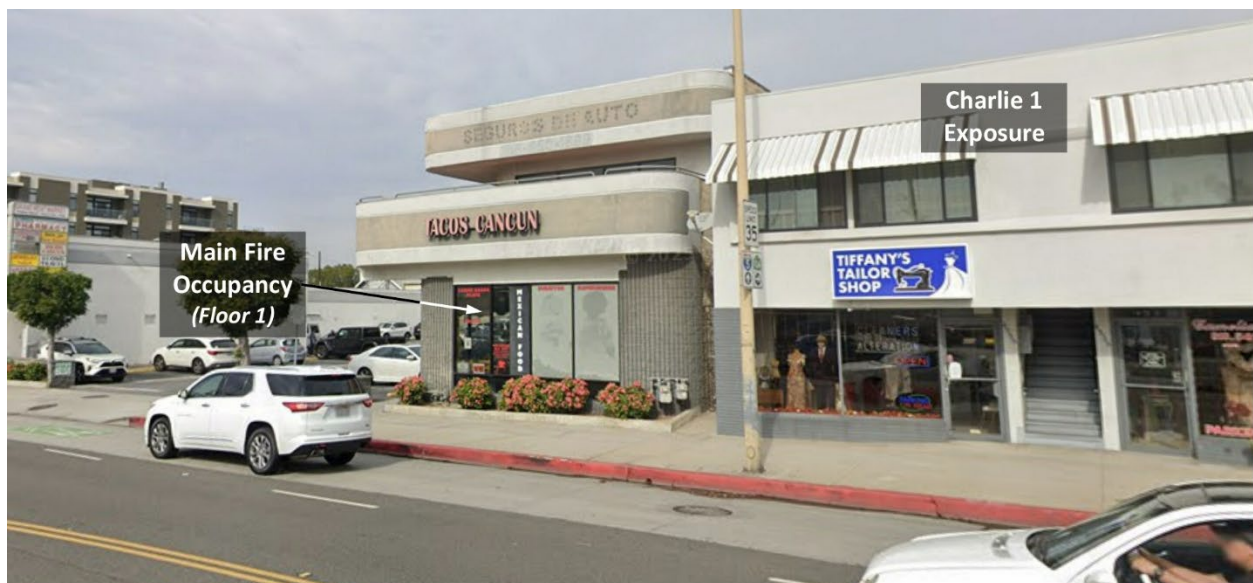
There is a hydrant diagonally across the street from the incident location and there are additional hydrants in the area as illustrated in Figure 1.

Figure 2. Aerial View



Note: Adapted from Google. (2025b). [Aerial view 459 W Broadway, Glendale, CA]. Imagery © Google, Imagery © Airbus Maxar Technologies, Map Data © 2025. <https://bit.ly/4oQrnLs>.

Figure 3. Charlie/Delta Corner



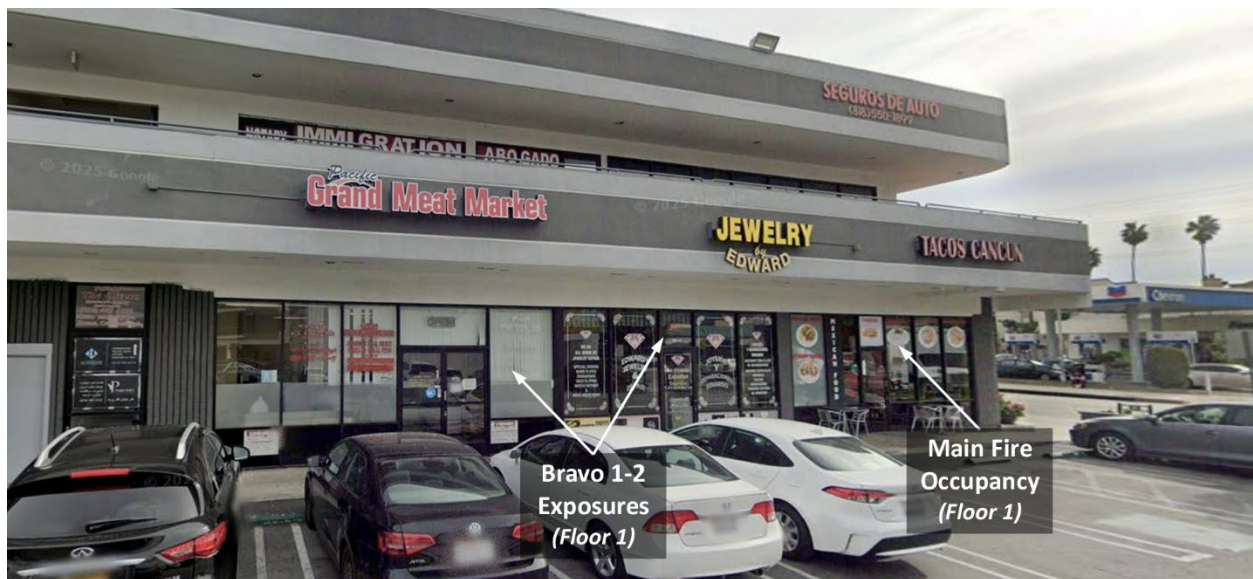
Note: Adapted from Google. (2025c). [Street view 459 W Broadway, Glendale, CA]. ©2025 Google. <https://bit.ly/4rQbCGT>.

Figure 4. Alpha/Delta Corner



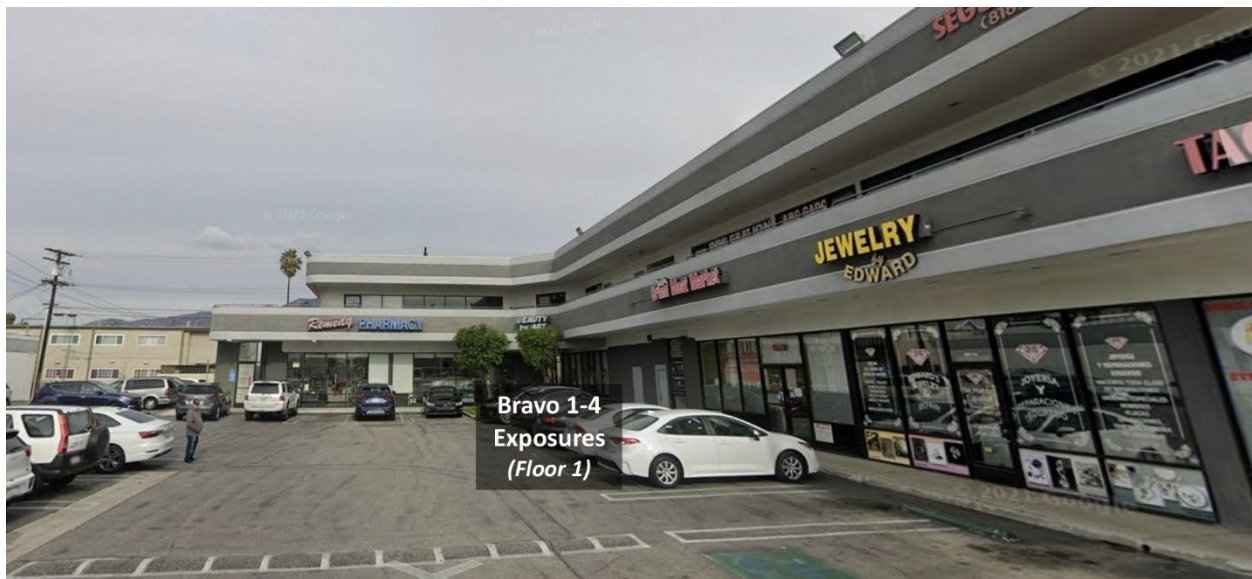
Note: Adapted from Google. (2025d). [Street view 459 W Broadway, Glendale, CA]. ©2025 Google. <https://bit.ly/3KURkeN>.

Figure 5. Side Alpha



Note: Adapted from Google. (2021a). [Street view 459 W Broadway, Glendale, CA]. ©2025 Google. <https://bit.ly/4rM8c82>.

Figure 6. Bravo Exposures (Floor 1)



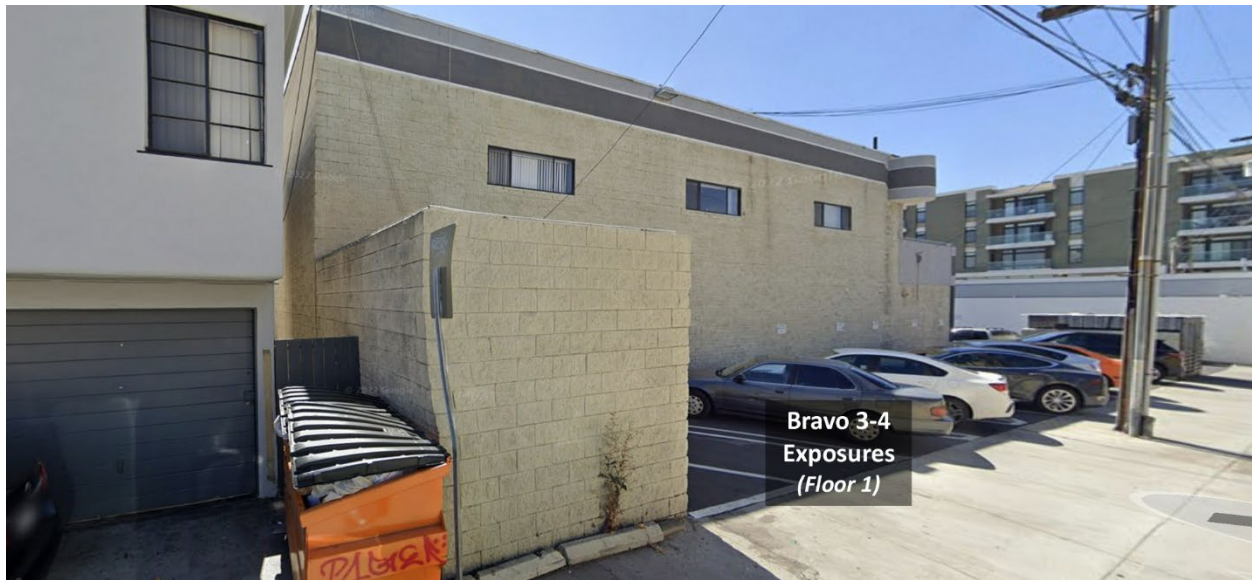
Note: Adapted from Google. (2021b). [Street view 459 W Broadway, Glendale, CA]. ©2025 Google. <https://bit.ly/3KSHA4I>.

Figure 7. Bravo 3 & 4 Exposures



Note: Adapted from Google. (2021c). [Street view 459 W Broadway, Glendale, CA]. ©2025 Google. <https://bit.ly/48QWslX>.

Figure 8. Side Bravo



Note: Adapted from Google. (2022). [Street view 459 W Broadway, Glendale, CA]. ©2025 Google. <https://bit.ly/4pBPxuq>.

Figure 9. Side Charlie



Note: Adapted from Google. (2025e). [3d aerial view 459 W Broadway, Glendale, CA]. Imagery © Google, Imagery © Airbus Maxar Technologies, Map Data © 2025. <https://bit.ly/4oP0o2R>.

The area surrounding West Broadway and Pacific Avenue, Glendale, CA, is a dense, mixed-use environment in the central business district with a concentration of retail, commercial, and office buildings. While the area immediately surrounding this intersection is commercial, the broader area, particularly in South Glendale, features significant multi-family residential zoning with a high population

density. The sociodemographics of Glendale are distinctive, with the city having a median age in the early 40s and a higher-than-average median household income for the region. This community has a highly diverse population with a significant number of households speaking a language other than English at home (which occasionally presents a language barrier during emergency response operations). (Google 2025f). The structure fire frequency in this area is typical of similar commercial districts in the city.

The temperature is currently 51° F with no appreciable wind from the north. (Weather Underground, 2025). **You are an engine company officer.** It is Wednesday, December 3rd and you are dispatched to Broadway and Pacific Avenue for a commercial fire in a restaurant along with four other engines, two ladder companies, medic unit, and two command officers at 23:47. The engines and ladder have four-person staffing¹.



Time starts now! Answer the first eight questions within the next 10 minutes. Decide and put your answers in the form of communication you would have with your crew, other companies, and the first arriving command officer. Save discussion for after answering these questions.

While responding, you hear the other engines, ladder, medic unit, and command officer go enroute. You do not receive any additional information from dispatch while enroute, but you are aware that the only restaurant at this intersection is Tacos Cancun.

1. What critical factors would you consider when dispatched and during response? What conversations would you have with your crew during response?

You anticipate the ladder company will arrive shortly after you, followed by the second arriving engine, and command officer. The third arriving engine will arrive after the command officer. Watch the first 00:06 of the [incident video](#) (The411, 2025) and examine Figure 10 illustrating conditions on arrival. Click the link or scan the QR code to access the video.

¹ If your first alarm deployment is different, use your own resource assignment and staffing.

Figure 10. Conditions on Arrival



Note: Adapted from The411. (2025). *Pre arrival 2 alarm strip mall fire In a taco restaurant Glendale CA.* Retrieved December 10, 2025, from <https://bit.ly/44frJ6Y>.

2. State your initial radio report (IRR) exactly as you would transmit it to dispatch.

3. What specific actions would you take (as the company officer) immediately upon arrival and exiting the apparatus and what task orders would you give your crew?

You observe smoke rolling out from under the overhang on Side Alpha of the Main Fire Occupancy and the Bravo 1 Exposure (Jewelry Store). There does not appear to be any smoke from Bravo 2 through 4 Exposures. From your position at ground level, it does not appear that there is any smoke from Floor 2.

4. Would you change the action you are taking or modify the assignments given to your crew? If so, what task orders would you provide?

5. State your follow up report exactly as you would transmit it to dispatch.

6. Ladder 1 arrives and reports that they are Level 1 on South Pacific Avenue and Broadway. State the tactical assignment you would give them exactly as you would transmit it.

7. Engine 2 arrives and reports that they are Level 1 on North Pacific Avenue just north of Broadway. State the tactical assignment you would give them exactly as you would transmit it.

8. Based on anticipated effectiveness of your tactical operations, state your conditions, actions, and needs (CAN) report that you would provide to the first arriving command officer as part of command transfer to IC #2.



Reflect on your strategic decision-making and responses to questions one through eight before answering the next six questions. Think about what cues, patterns, or anomalies (differences from conditions that you would anticipate) informed your answers.

9. What was the problem?

10. What was getting in the way of achieving your tactical priorities?

11. Was there anything in this incident that could have hurt or killed you (right now)?

12. Was it reasonable to believe that the building was occupied?

13. Was there searchable space?

14. If you believed it was reasonable that there was searchable space, what could you do about it?

Watch the [incident video](#) from 00:30 to 01:40 and listen to the first 07:30 of the [incident audio](#) before answering the remaining questions. The incident audio includes dispatch, command, and tactical talk groups.



Video



Audio

15. Were Engine 21's initial actions consistent with the actions you specified in this 10-Minute Training?

16. In this segment of the incident audio, were the assignments given by Broadway IC (Battalion 2) clear and concise? What assumptions were implicit in the way that these assignments were made?

17. Engine 26 was assigned to water supply and to check for extension on the second floor. If you were the company officer of Engine 26, how would you go about this task?

18. Truck 21 was assigned to ventilation. What ventilation tactics would be appropriate given the fire location and smoke conditions observed in the video? How does simply assigning "ventilation" impact the IC's situation assessment and action planning?

19. Engine 21 referred to the first-floor exposures as "to the left" and Battalion 2 identified assigned Engine 22 as Division Alpha and to check for extension on the Delta 1 Side. How can confusion regarding exposure designation (on the part of the sender or receiver) present an issue in making tactical assignments? In this incident the only exposures on Floor 1 were on the Bravo Side but consider how this might be different if the fire was in a middle unit. How would you have responded if your company was assigned to check for extension in Delta Exposures?

Additional Learning: Listen to the incident audio (first 15 minutes of the incident). This audio recording has been edited to reduce the volume of the dispatch talk group after companies arrive on scene and to remove several segments of unrelated radio communications prior to arrival (e.g., other incidents). Post arrival communications are in real time. While listening to the incident audio:

- Use the tactical worksheet that your agency's command officers normally work with and track the location and function of the companies and the incident organization implemented by Broadway IC.
- Identify things that were done well in this segment of the incident audio.
- How did incident organization change during this segment of incident operations? How did the incident organization impact span of control and tactical supervision?
- Broadway IC assigned company officers as division and group supervisors. What challenges do company officers face when they have responsibility for task level supervision (i.e., supervision of their crew) and tactical supervision (supervision of other companies)?

References

- Broadcastify. (2025). Verdugo Fire Red 1-8 12/04/2025 11:39 PM <--> 12:09 AM PST. Retrieved December 10, 2025, from <https://bit.ly/4rN7Huw>.
- Google. (2021a). [Street view 459 W Broadway, Glendale, CA]. ©2025 Google. Retrieved December 11, 2025, from <https://bit.ly/4rM8c82>.
- Google. (2021b). [Street view 459 W Broadway, Glendale, CA]. ©2025 Google. Retrieved December 11, 2025, from <https://bit.ly/3KSHA4l>.
- Google. (2021c). [Street view 459 W Broadway, Glendale, CA]. ©2025 Google. Retrieved December 11, 2025, from <https://bit.ly/48QWslX>.
- Google. (2022). [Street view 459 W Broadway, Glendale, CA]. ©2025 Google. Retrieved December 11, 2025, from <https://bit.ly/4pBPxuq>.
- Google. (2025a). [Map, 459 W Broadway, Glendale, CA]. Map data ©2025 Google. Retrieved December 11, 2025, from <https://bit.ly/4oCnj1c>.
- Google. (2025b). [Aerial view 459 W Broadway, Glendale, CA]. Imagery © Google, Imagery © Airbus Maxar Technologies, Map Data © 2025. Retrieved December 11, 2025, from <https://bit.ly/4oQrnLs>.
- Google. (2025c). [Street view 459 W Broadway, Glendale, CA]. ©2025 Google. Retrieved December 11, 2025, from <https://bit.ly/4rQbCGT>.
- Google. (2025d). [Street view 459 W Broadway, Glendale, CA]. ©2025 Google. Retrieved December 11, 2025, from <https://bit.ly/3KURkeN>.

Google. (2025e). [3d aerial view 459 W Broadway, Glendale, CA]. Imagery © Google, Imagery © Airbus Maxar Technologies, Map Data © 2025. Retrieved December 11, 2025, from <https://bit.ly/4oP0o2R>.

Google. (2025f). Sociodemographic profile of the neighborhood surrounding 459 W Broadway, Glendale, CA [Gemini AI response, December 10, 2025]. Unpublished raw data.

Hartin, E. (2025) [Edited incident communications, commercial fire 18 459 W Broadway, Glendale, CA, December 3, 2025]. Retrieved December 6, 2025, from <https://bit.ly/4q9OYrE>.

The411. (2025). Pre arrival 2 alarm strip mall fire In a taco restaurant Glendale CA. Retrieved December 10, 2025, from <https://bit.ly/44frJ6Y>.

Weather Underground (2025). Burbank, CA weather history [historical weather December 3, 2025]. Retrieved December 10, 2025, from <https://bit.ly/4aartKi>.

Build command competence through weekly practice.

Receive a link to each new 10-Minute Training tactical decision game by email.

[Click here](#) or scan the QR code to subscribe.

